

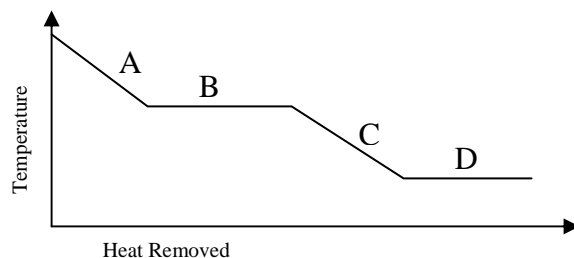
Name: _____

Chemistry 121
Fall 2006
Test 4

Instructions: You have 50 minutes to complete this 100-point exam. You may use a simple scientific calculator. No programmable calculators allowed.

I. Multiple Choice (10 pts) Carefully and clearly circle the best answer.

- Which of the following molecules has the largest boiling point?
 - CF₄
 - CCl₄
 - CBr₄
 - Cl₄
- What region is correctly labeled as the gas phase on the cooling curve below?



- Small structural units within a molecule where most of the compound's reactions occur are called:
 - inorganic groups.
 - isomer groups.
 - functional groups.
 - organic groups.
- Which of the following is not a component of nucleotides?
 - Pentose sugar
 - Peptide linkage
 - Phosphate
 - Nitrogen containing organic base
- Which of the following gases will diffuse the fastest?
 - N₂
 - O₂
 - F₂
 - Cl₂

II. Calculations, Functional Groups, Forces and Biochemicals Show all work. Partial credit will be given for correct work. If I cannot read the work, it will not be graded.

- (10 pts) A gas collected over water had a total pressure of 752.4 torr. Calculate the partial pressure of the gas **in atm** if the temperature was 15°C. (Hint: 1 torr = 1 mmHg)

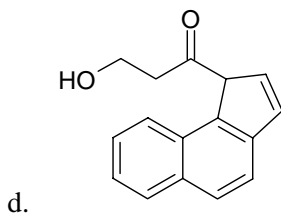
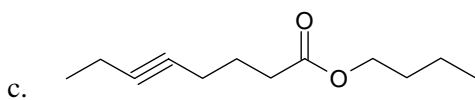
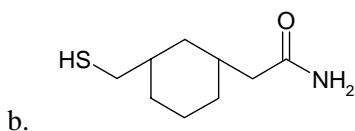
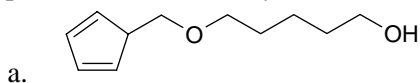
Temperature (°C)	Vapor Pressure (torr)
0	4.579
5	6.543
10	9.209
15	12.79
20	17.54
25	23.76

2. (20 pts) Draw the phase diagram for a substance that has a nbp of 250°C, a nfp of 100°C, a triple point at a pressure of 0.50 atm and a temperature of 200°C and a critical point of 3.0 atm and 400°C. Label the phases, the critical point and the triple point.

3. (5 pts) In the primary protein structure below, circle the amino acid that has the carboxylic acid terminus and put a triangle around the amino acid with the amine terminus.

Ala – Gly – Phe – Glu – Asp – Asp – Ser – Ser – Ala – Gly – Pro – Try

4. (10 pts) Circle and identify the functional groups in the molecules below.



5. (10 pts) Give the complimentary base pairing for the following nucleic acid sequences and identify if it is DNA or RNA.

a. GCAAU

b. TTGCA

9. (10 pts) Answer **one** of the following essay questions in **5 – 6 GRAMMATICALLY CORRECT SENTENCES**.

- Define monosaccharides and polysaccharides and highlight the differences between the two.
- Describe what happens when you place a liquid in a beaker and then place the beaker in a closed container.

	IA																												VIII A									
1	1																	2																				
	H																	He																				
	1.008																	4.00																				
	IIA																		III A	IVA	VA	VIA	VIIA															
2	3	4																	5	6	7	8	9	10														
	Li	Be																	B	C	N	O	F	Ne														
	6.94	9.01																	10.81	12.01	14.01	16.00	19.00	20.18														
3	11	12																	13	14	15	16	17	18														
	Na	Mg																	Al	Si	P	S	Cl	Ar														
	22.99	24.31																	26.98	28.09	30.97	32.06	35.45	39.95														
			IIIB	IVB	VB	VIB	VII B	VIII B					IB	IIB																								
4	19	20	21	22	23	24	25	26	27	28	29	30	31	32	33	34	35	36																				
	K	Ca	Sc	Ti	V	Cr	Mn	Fe	Co	Ni	Cu	Zn	Ga	Ge	As	Se	Br	Kr																				
	39.10	40.08	44.96	47.90	50.94	52.00	54.94	55.85	58.93	58.71	63.55	65.37	69.72	72.59	74.92	78.96	79.90	83.80																				
5	37	38	39	40	41	42	43	44	45	46	47	48	49	50	51	52	53	54																				
	Rb	Sr	Y	Zr	Nb	Mo	Tc	Ru	Rh	Pd	Ag	Cd	In	Sn	Sb	Te	I	Xe																				
	85.47	87.62	88.91	91.22	92.91	95.94	[98]	101.1	102.9	106.4	107.9	112.40	114.8	118.7	121.8	127.60	126.90	131.30																				
6	55	56	71	72	73	74	75	76	77	78	79	80	81	82	83	84	85	86																				
	Cs	Ba	Lu	Hf	Ta	W	Re	Os	Ir	Pt	Au	Hg	Tl	Pb	Bi	Po	At	Rn																				
	132.9	137.3	175	178.5	181	183.9	186.2	190.2	192.2	195.1	197	200.59	204.4	207.2	209	[209]	[210]	[222]																				
7	87	88	103	104	105	106																																
	Fr	Ra	Lr																																			
	[223]	[226]	[262]	[261]	[262]	[263]																																
	57	58	59	60	61	62	63	64	65	66	67	68	69	70																								
	La	Ce	Pr	Nd	Pm	Sm	Eu	Gd	Tb	Dy	Ho	Er	Tm	Yb																								
	138.9	140.1	140.9	144.2	[145]	150.4	152	157.3	158.9	162.5	164.93	167.3	168.9	173																								
	89	90	91	92	93	94	95	96	97	98	99	100	101	102																								
	Ac	Th	Pa	U	Np	Pu	Am	Cm	Bk	Cf	Es	Fm	Md	No																								
	[227]	232	[231]	238	[237]	[244]	[243]	[247]	[247]	[251]	[252]	[257]	[258]	[259]																								