



# ALL SAINTS ACADEMY

HISTORY RENEWED - COMMUNITY REIMAGINED

## CONCEPT STATEMENT

The project aims to restore All Saints Academy, accentuating its existing intricate arches and doorways, while seamlessly incorporating ambient lighting and contemporary furnishings to create an inviting atmosphere. It will merge Gothic and Classical Roman design elements, featuring graceful arched passageways, stately columns, and luxurious materials that enhance visual elements and create functionality. Through the upgrade of safety features and the enhancement of accessibility, this adaptive reuse will transform the building into a vibrant community hub, preserving its historical legacy while addressing modern needs.



STYLISH LOUNGE AREA WITH ROUND TABLES AND BLUE CHAIRS



STYLISH BAR AREA WITH LONG COUNTER AND STOOLS

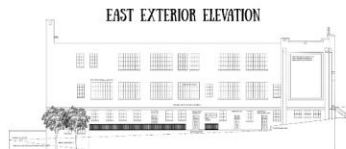


THEATRE AREA WITH SEATING AND STAGE

THEATRE AREA WITH SEATING



NORTH EXTERIOR ELEVATION



EAST EXTERIOR ELEVATION

## BUILDING INFORMATION

The building was designed by architect Clarence Jones, and it is currently owned by the Basilica of Sts. Peter and Paul. The building was constructed in 1926, and served as a school for many years. It has sat empty and unused for far too long, and it is in need of a facelift. Senior Thesis students from the University of Tennessee-Chattanooga researched All Saints Academy at 310 E Eighth St, Chattanooga, TN. Divided into groups, they examined newspaper archives at the Downtown Library, accessed property records at the courthouse, and documented the building's exterior. With support from Professor Jessica Eberhardt, who provided National Register materials, blueprints, and photographs, students also conducted field measurements to create floorplans and renderings.

## UPPER LEVEL

- Storage/Laundry: Space for laundering and storage.
- Secretary's Office: 24' x 12' office space.
- Community Room: Lounge for local guests.
- Double Double Room: Suites with two queen beds.
- King Room: Suite with king bed.
- Executive Suite: Larger suite with two king beds.
- Presidential Suite: Most luxurious suite.
- Head Elevator: Accessed by keycard for local guests.
- Director and Board: Private access to all levels.
- OCCUPANCY LOAD FOR ENTIRE LEVEL: 175



## MAIN LEVEL

- Club & Bar: Fully stocked bar and lounge.
- Cafe: Coffee shop with casual seating.
- Room Storage: Designated room and dry storage.
- Head Lobby: Main entrance with office space.
- Pop Lobby: Meeting or training sessions prep area.
- Boardroom: Flexible meeting space.
- Restroom Level 2: Restroom level of restaurant.
- Restrooms: ADA-compliant restrooms.
- Director and Board: Private access to all levels.
- Head Elevator: Accessed by keycard for local guests.
- OCCUPANCY LOAD FOR ENTIRE LEVEL: 107



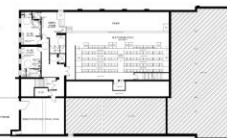
## BASEMENT LEVEL 2

- Restaurant Level 2: Main dining area.
- Spa: Fully stocked spa with massage services.
- Kitchen: Serves the restaurant and spa.
- Breakroom: Also lounge and bar with a stage.
- Restrooms: ADA-compliant restrooms.
- Storage: For restaurant and spa-related items.
- Elevator and Board: Private access to all levels.
- OCCUPANCY LOAD FOR ENTIRE LEVEL: 193



## BASEMENT LEVEL 1

- Green Room: Prep area for performers.
- Sound Booth: Control center for AV.
- Spa: Fully stocked spa with massage services.
- Restroom: ADA-compliant restrooms.
- Director Room: Mechanical systems.
- Storage Room: Storage for event-related items.
- Elevator and Board: Private access to all levels.
- OCCUPANCY LOAD FOR ENTIRE LEVEL: 284



CONTEMPORARY OFFICE SPACE WITH LARGE CONFERENCE TABLE



CONTEMPORARY OFFICE SPACE WITH LARGE CONFERENCE TABLE



CAFE AREA WITH COUNTER AND STOOLS



CAFE AREA WITH COUNTER AND STOOLS



RESTAURANT AREA WITH ROUND TABLES AND CHAIRS



RESTAURANT AREA WITH ROUND TABLES AND CHAIRS



LOUNGE AREA WITH LARGE SOFA AND ARMCHAIRS



LOUNGE AREA WITH LARGE SOFA AND ARMCHAIRS



WHY?

Chattanooga-area residents are the reason behind transforming the empty school into a vibrant multi-use hub—now serving the community with spaces for local events, small businesses, education, and recreation while reimagining a long-forgotten space.



WHY?

The facility is a dynamic, multi-use space designed to meet a range of community needs—offering open-air events, small businesses, education, and recreation while reimagining a long-forgotten space.



WHY?

Located at 310 E Eighth St in Chattanooga, Tennessee the building is now a vibrant downtown area. While the surrounding neighborhood is thriving, the building itself has long been underutilized, making its transformation into a multi-use hub a key development.



WHY?

The facility is needed because Chattanooga residents, through surveys and interviews, highlighted a demand for a versatile community space. This adaptive reuse of the former school revitalizes an empty building, meeting the community's needs for work, events, and education.

PLEASE SCAN TO SEE  
VIRTUAL WALKTHROUGH  
OF THE ADAPTIVE  
REUSE RENOVATION OF  
ALL SAINTS ACADEMY

ZACORI OLLIS

