

**ETS® Proficiency Profile**

**Summary of Proficiency Classifications**  
 To show how many students are proficient at each level

**University of Tennessee - Chattanooga**  
**Abbreviated Form**

**Test Description:** Combined

**Number of students tested:** 1593

**Number of students included in these statistics:** 1591

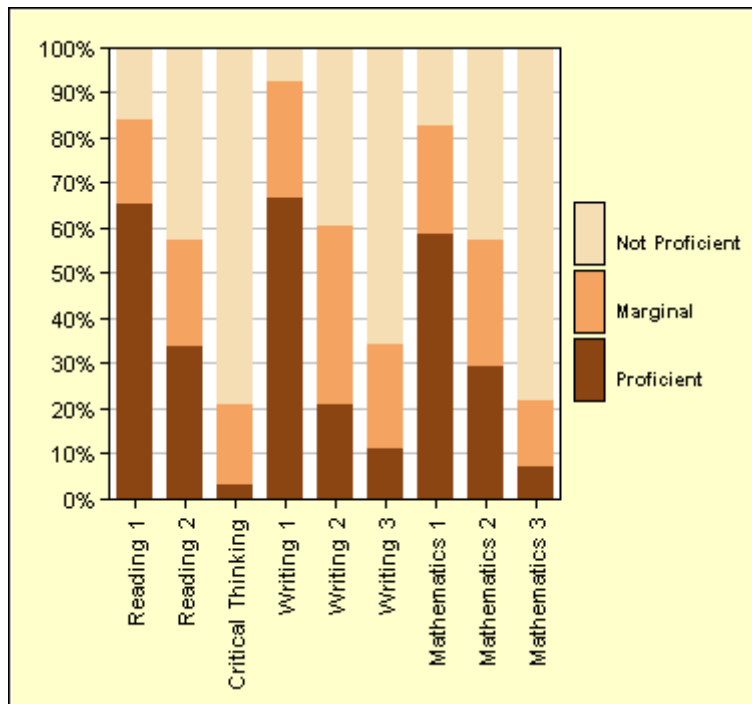
**Number of students excluded (see roster):** 2

**Cohort Name:** Combined

**Close Date:** Combined

**Student Level:** All

Skill Dimension	Proficiency Classification		
	Proficient	Marginal	Not Proficient
<b>Reading, Level 1</b>	65%	19%	16%
<b>Reading, Level 2</b>	34%	24%	42%
<b>Critical Thinking</b>	3%	18%	79%
<b>Writing, Level 1</b>	67%	26%	7%
<b>Writing, Level 2</b>	21%	40%	39%
<b>Writing, Level 3</b>	11%	23%	66%
<b>Mathematics, Level 1</b>	59%	24%	17%
<b>Mathematics, Level 2</b>	29%	28%	42%
<b>Mathematics, Level 3</b>	7%	14%	78%



The skills measured by the ETS® Proficiency Profile test are grouped into proficiency levels - three proficiency levels for writing, three for mathematics, and three for the combined set of skills involved in reading and critical thinking. The table and graph show the number and percentage of students who are proficient, marginal, and not proficient at each proficiency level in reading and critical thinking, writing, and mathematics. A student classified as marginal is one whose test results do not provide enough evidence to classify the student either as proficient or as not proficient. See the User's Guide for more information about these classifications, including a list of the specific skills associated with each proficiency level in each skill area.

ETS protects the confidentiality of all test data.  
 Copyright © 2010 Educational Testing Service. All rights reserved.