

Chapter 1

Introduction

I. Introduction to the UTC Psychology Department Computer Lab

A. Computers

The Psychology Department Computer Lab holds 24 computers. Most of the computers, along with other equipment in the lab, were purchased with funds from the technology fees charged to students in the 1998-99 academic year. They were installed in Fall 2005 and were first used in the Spring 2006 semester. The podium at the front of the room and the video projector were installed in the 2007-2008 academic year.

All of the computers are connected to a printer. All printing in the lab must be paid for using a MOC account. All computers are connected to the internet.

B. Software

All of the computers in the lab hold the Microsoft Office suite of programs, including Microsoft Word, **Excel**, PowerPoint, and Access. All of the computers also hold **IBM® SPSS® Statistics software (SPSS)¹**. **This lab is devoted to teaching you how to use Excel and SPSS (mostly SPSS) to analyze data of psychological research.**

II. Running Excel and SPSS.

Here is the icon for Excel:



Here is the icon for SPSS:



To run either program, simply double-click the icon. (If you can't find the icon on your desktop, ask around to get someone to help you find it.)

A. Run Excel now. After it's open, click on the X in the upper right of the screen to close it.

B. Run SPSS now. As above, after it's opened, close it.

These exercises were just to make sure that everyone in the lab is able to access both programs.

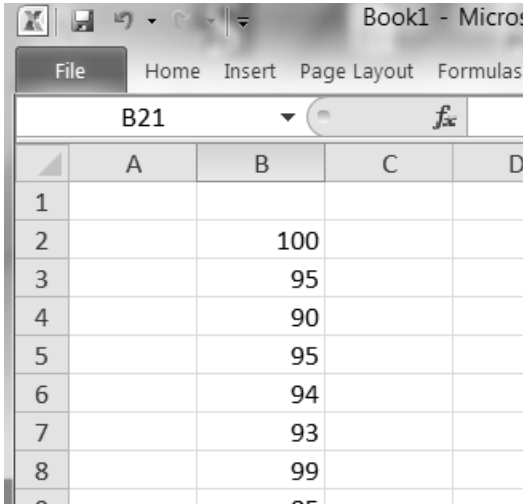
¹ SPSS Inc. was acquired by IBM in October, 2009.

III. Some practice entering data into Excel

A. Suppose the following numbers represent final exam performance in a statistics course. (100 was the maximum possible.)

100 95 90 95 94 93 99 85 80 90 93 91 95 100 93 88 89 72 90 93 95 90
100 82 100 82 94 96 95 94 92

B. Run Excel. Enter the values into a column. You can use any column.



Now is the time to ask your TA if you have questions.

Your screen should look something like this when you're finished entering the numbers.

This exercise introduces you to the **worst thing about data analysis using computers:** Entering the data.

Most people put the name of each column of scores in the cell immediately above the first score in the column. I've done that below.

	A	B	C
1		Grades	
2		100	
3		95	
4		90	
5		95	
6		94	
7		93	
8		99	
9		85	
10		80	

Note that the name is aligned in the left of the cell while the values are aligned in the right of their cells.

Excel automatically puts words in the left of cells but puts numbers in the right.

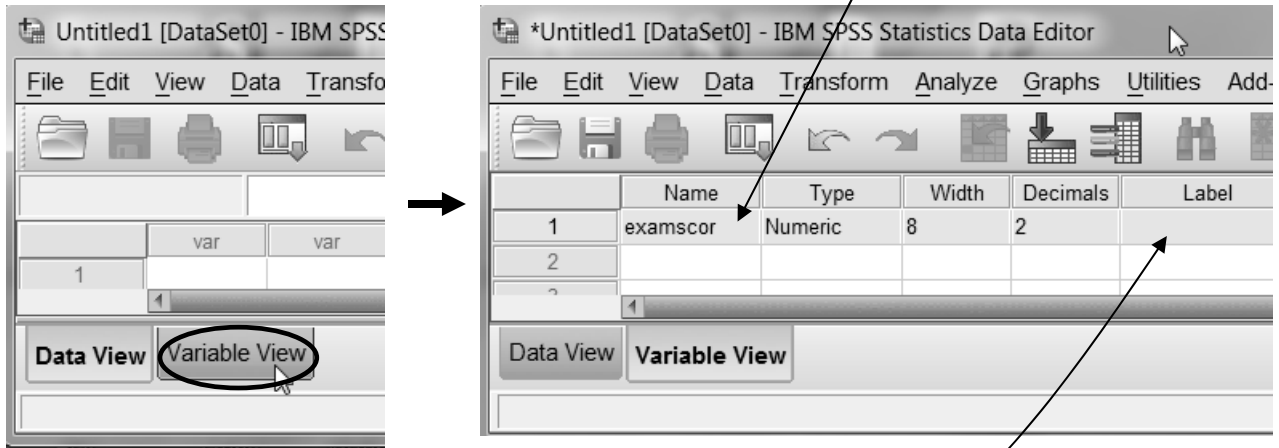
We'll now do the same thing in SPSS.

IV. Enter the same data into SPSS.

A. The data are 100 95 90 95 94 93 99 85 80 90 93 91 95 100 93 88 89 72 90 93 95 90 100 82 100 82 94 96 95 94 92

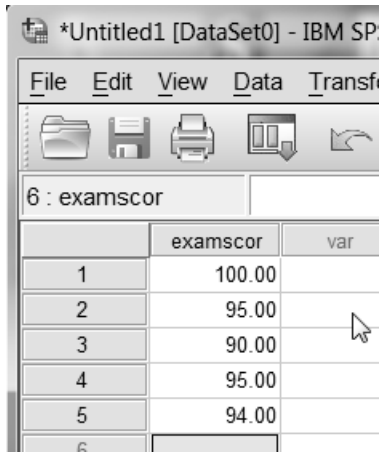
B. Run SPSS. Ask your TA to get you to the **Editor Window**.

C. Prior to entering the data, name the variable, **examscor**, by clicking on the **Variable View** tab in the Editor Window. Type **examscor** in top empty cell in the Name column.



D Give the variable the extended label, “Score on first exam”. Do this by typing it in the box under Label.

E. Now click on the **Data View** tab and enter the data beginning in the first cell under examscor.



Note that SPSS, names are in special boxes at the top of a column. That’s a difference between Excel and SPSS. In Excel, you put names of columns of numbers in a regular cell. In SPSS, you have to use the Variable View option to put names into the special place at the top of a column.

Note that SPSS automatically puts .00 after each number.

If you want to get rid of that,

- click on Variable View
- click on the 2 under Decimals
- type 0 (or use the arrow keys)
- Click on Data View.

Take a moment to review the procedures you’ve learned on this page – naming a variable, giving a variable an extended label, entering data, setting the number of places past the decimal point to be displayed.

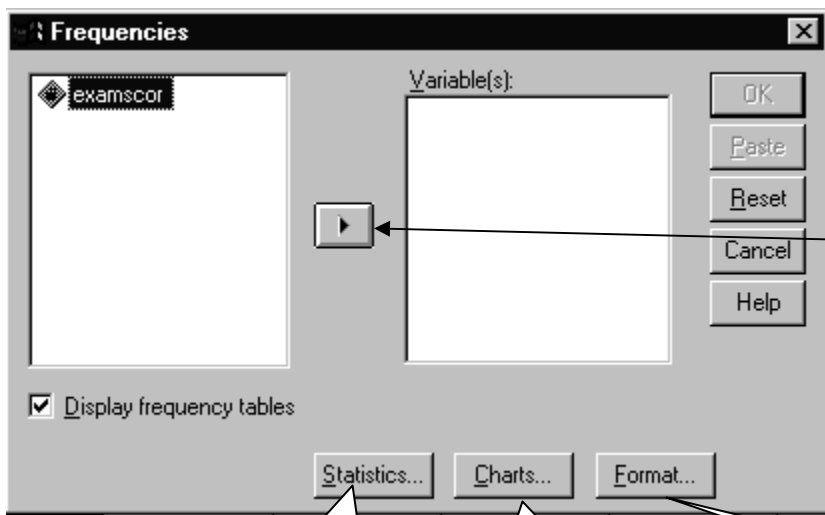
V. Analyzing previously entered scores using the SPSS Frequencies procedure.

A. Pull down the Analyze menu.

Choose **Descriptive Statistics**.

Choose **Frequencies...**

Analyze -> Descriptive Statistics -> Frequencies...



The left box contains the names of all the columns in the Data Editor Window. The right box will contain only the names of those to be analyzed.

Click on the [>] button to move the name of the variable from the box on the left to the box on the right.

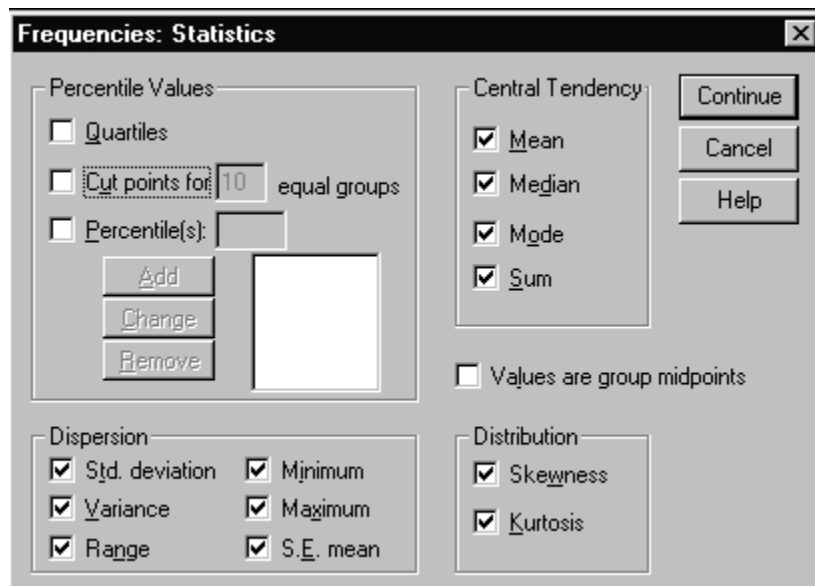
Or you can simply drag the name from the left field into the right field.

Click on the [Statistics...] button to specify which statistics are to be computed.

Click on the [Charts...] button to specify printing of charts.

The [Format...] button allows you to control some aspects of the way the output appears..

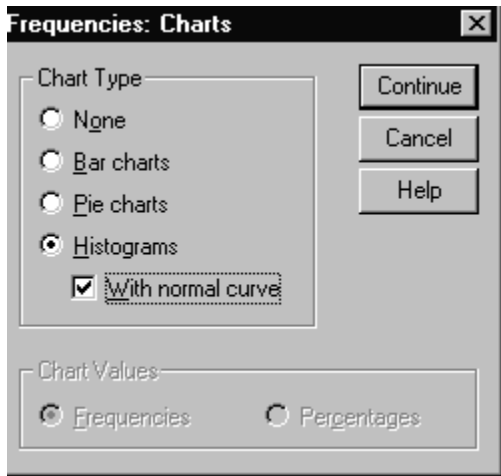
B. Click on the [Statistics...] button.



Check all the boxes that I checked on the dialog box shown on the left.

These are most of the descriptive statistics which will be covered in this course.

C. Click on the [Charts...] button.



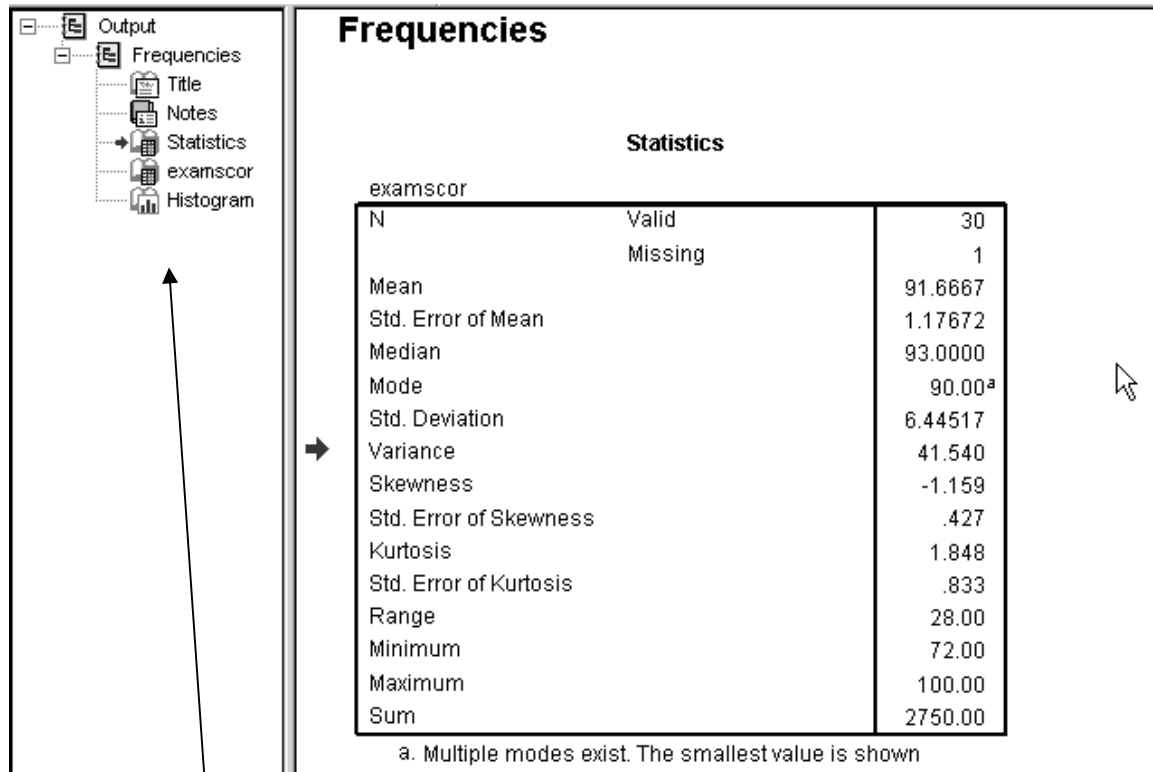
Check [Histograms] and also check the [With normal curve] button.

Click on the [Continue] button.
Then click the [OK] button.

SPSS will perform the analyses and put the results in the Output Window.

VI. The Output Window

SPSS presents the results of all of its analyses in a special window called the Output Window.

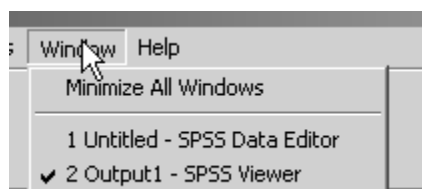


Statistics		
examscor		
N	Valid	30
	Missing	1
Mean		91.6667
Std. Error of Mean		1.17672
Median		93.0000
Mode		90.00 ^a
Std. Deviation		6.44517
Variance		41.540
Skewness		-1.159
Std. Error of Skewness		.427
Kurtosis		1.848
Std. Error of Kurtosis		.833
Range		28.00
Minimum		72.00
Maximum		100.00
Sum		2750.00

a. Multiple modes exist. The smallest value is shown

A. Use the “Index” on the left of the output window to select output you wish to view.

B. You can move back and forth between the Data Editor window and the Output Window



VII. Some practice entering data into SPSS from a file.

A. Enter data from the file, “Employee data.sav”.

To find the file:

File -> Open -> Data -> Local Disk(C) -> Program Files -> IBM -> SPSS -> Statistics -> 20 -> Samples -> English -> Employee Data.sav (Whew!!)

- B. Run Frequencies on Salary. Analyze -> Descriptive Statistics -> Frequencies...
Click on the Charts button and choose Histogram

Notice the distribution shape. It's a classic positively skewed distribution.

- C. Run Frequencies again, this time suppressing the SPSS Frequency table

Ask your TA to show you how to suppress the table. The Frequency table can take up a lot of space when you're working with a variable with many, many values. In those cases, you may want to suppress the table.

- D. Run Frequencies on Gender

Click on the Charts button and choose Bar Chart.

Note that Gender is a "string" variable, not a numeric variable. A bar chart is the appropriate way to graph such a variable.

VIII. Getting data from Biderman's web page.

- A. Open Internet Explorer and go to www.utc.edu/michael-biderman
B. Click on the **Psychology Lab Manual link**.
C. Scroll down until you see the heading, Data files for lab
D. Click on the **GSS93 subset.sav** link and choose **Open**.
E. Run Frequencies on the variables representing different types of music preferences (Bigband to Hvymetal). Have your TA show you how to select several variables.
F. Compare the distributions. Don't bother with histograms.

For these data, a value of 1 indicated that the respondent liked the music and a response of 5 indicated that they did not like the music. The values 8 and 9 were used for persons who did not respond to a question. Note that the respondents to this survey didn't like Rap and didn't like Opera.

IX. Exercises on data entered via the keyboard.

- A. Find the sheet "Speeds on Vine and Oak Streets" in this manual.
B. Enter the data from Vine St. Run Frequencies.
C. Then enter the data from Oak St. Isn't data entry fun? Run Frequencies.
D. Compare the distributions. On which street did cars drive faster?

PSY Laboratory Manual Chapter: Speeds on Vine and Oak Street

Two students argued about the relative safety of their streets. One lives on Vine St. The other lives on Oak St. They decided to measure the speeds of randomly selected cars during the period from 5 PM to 6 PM. The speeds are as follows.

The question to be answered is: On which streets are speeds faster “on the average”?

From the point of view of **descriptive statistics**, the issue is how to summarize the “average” of the speeds on each of the streets.

From the point of view of **inferential statistics**, the issue is how to generalize any difference between the two samples of speeds to the populations of speeds on the two streets.

We’ll focus on a descriptive comparison here and deal with inferential comparisons later in the course.

First, run Frequencies on Vine St. speeds.

Then run Frequencies on Oak St. speeds.

Vine St. Speeds

34 32 32 30 31 29 35 38 37 36 35 39 35 37 35 34 33 32 39 37 36 35 30 29 31 33 35 32

Oak St. Speeds

27 26 29 30 38 37 36 37 24 30 31 36 34 38 31 20 37 29 30 35 37 31 26 38 31 30 27 26

Chapter 1 Homework Exercises

For all problems asking for percentages, use the “Percentages” column, not the Valid Percentages column.

Data will be in either the SPSS Examples folder or on the Biderman web site.

1. The **GSS93 Subset.sav** data file on the Biderman web site includes a variable called TVHOURS: Hours per day watching TV.

Use the Frequencies procedure in SPSS to produce an SPSS Frequencies table and the graph which is appropriate for this variable.

In your submission, include the following

- A. A copy of the table – either printed or copied by hand.
- B. Below the table put the answer to the question: What % of the survey sample watched no TV.
- C. Following the above answer, put the answer to the question: What % of the survey sample watched TV 4 hours or more per day? **Identify the portions of the output from which you got your answer.**

2. Open the **GSS93 Subset.sav** file on the Biderman web site. It includes a variable called PARTYID: Political Party Affiliation.

- A. Use the Frequencies procedure in SPSS to produce an SPSS Frequencies table and the graph that is appropriate for this variable. **Put a copy of the table in your submission.**
- B. Below the table, put the answer to the question: . Does the sample include more persons who describe themselves as "Democrats" or does it include more persons who describe themselves as "Republicans"? **Identify the portions of the output from which you got your answer.**
- C. Following the above answer, put the answer to the question: What percent of the persons in the sample describe themselves as “Extreme” in either direction? **Identify the portions of the output from which you got your answer.**

3. Consider the following hypothetical situation. Speeds on 5th St. between the University Center and the Cemetery were the source of a controversy. Students attending classes in Holt Hall believed that on the average, speeds on the street were much higher than the posted limit of 25 MPH. On the other hand, campus police cruising the area reported perceiving no problem in average speeds, although, of course, they had ticketed the occasional speeder in front of Holt Hall. The campus administration announced that it would do nothing to change the speed limit unless evidence was provided that the average speed of the population of cars on the street was different from 25. A radar gun was borrowed and a random sample of speeds on 5th St. near the fire hydrant was taken. The results of the sample are below.

Speed: 26 30 32 23 22 20 27 28 24 25 27 28 21 20 19 28 20 23 25 27 29 33 19 20 23 26 27 28 26 24.

A. Enter the data into SPSS. Use the Frequencies procedure in SPSS to produce an SPSS Frequencies table and the graph appropriate for this variable. **Put the Frequencies table and graph in your submission.** Print it or copy it by hand.

B. Below the table and graph, put your answer to the following question: Which position appears to be supported by the data – the position that speeds are slower than 25 on the average or the position that speeds are greater than 25 on the average? Include a one or two sentence defense of your answer.

C. Following the above answer, put your answer to the following question: What % of speeds were within 3 MPH of the posted speed limit? Remember to use the Percent column, not the Valid Percent column.

4. A grocery chain offered a special on 3 lb. hamburger (i.e., ground beef) for \$.39 per lb. (This is an old problem.) The chain is concerned about the process that puts the hamburger into the packages. There had been some allegations of short-weighting. A sample of packages was purchased and weighed. The weights of the packages are given below.

Weights: 2.95 3.02 2.91 2.87 2.93 2.94 2.89 2.90 2.98 3.01 3.05 2.78 3.00 2.95 2.97 2.95 3.12 2.81 2.91 3.00 2.98 3.01 3.04 3.02 3.06 2.89 2.80 2.90 2.99

A. Enter the data into SPSS. Use the Frequencies procedure in SPSS to produce an SPSS Frequencies table and the graph that is appropriate for this variable. **Put the table and graph in your submission.**

B. Below the table and graph, put your answer to the question: What % of the packages are within .02 of the advertised weight? Remember to use the Percent column, not the Valid Percent column.

C. Below your answer to the above question, put your answer to the following: What % of the packages were short-weighted, however little?