

SUBJECTIVE SCORE INSTRUCTOR USE ONLY

100	90	80	70	60
50	40	30	20	10
9	8	7	6	5
4	3	2	1	0

IMPORTANT

USE NO. 2 PENCIL ONLY

TO USE SUBJECTIVE SCORE FEATURE:

- Mark total possible subjective points
- Only one mark per line on key
- 163 points maximum

EXAMPLE OF STUDENT SCORE:

100	90	80	70	60
50	40	30	20	10
9	8	7	6	5
4	3	2	1	0

• MAKE DARK MARKS

• ERASE COMPLETELY TO CHANGE

• EXAMPLE: (A) (B) (C) (D) (E)

SCANTRON

NAME	Test 4A Key		
SUBJECT		TEST NO.	A
DATE		PERIOD	

TEST RECORD	
PART 1	
PART 2	
TOTAL	

REORDER ONLINE www.ScantronStore.com

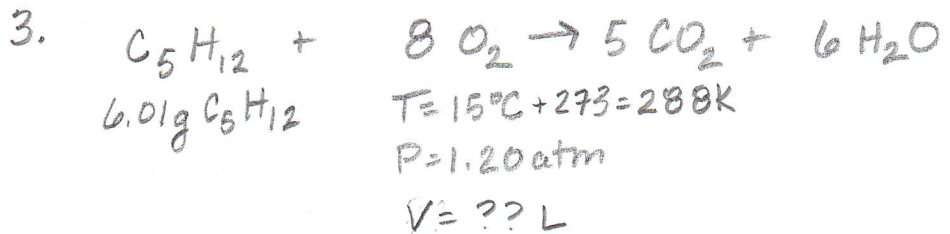
PART 1

$$1. 2.50 \text{ L} \times \frac{0.540 \text{ mol NaBF}_4}{\text{L}} \times \frac{109.79 \text{ g NaBF}_4}{1 \text{ mol}} = 148 \text{ g NaBF}_4$$

$$2. M_c V_c = M_d V_d$$

$$(6.00 \text{ M})(V_c) = (2.00 \text{ M})(75.0 \text{ mL})$$

$$V_c = 25.0 \text{ mL}$$



$$6.01 \text{ g C}_5\text{H}_{12} \times \frac{1 \text{ mol C}_5\text{H}_{12}}{75.12 \text{ g C}_5\text{H}_{12}} \times \frac{8 \text{ mol O}_2}{1 \text{ mol C}_5\text{H}_{12}} = 0.640 \text{ mol O}_2$$

$$PV = nRT$$

$$V = \frac{nRT}{P} = \frac{(0.640 \text{ mol O}_2)(0.08206 \frac{\text{L atm}}{\text{mol K}})(288 \text{ K})}{1.20 \text{ atm}}$$

$$V = 12.6 \text{ L O}_2$$

$$4. V_1 = 1.462 \text{ L} \quad V_2 = ?$$

$$T_1 = 273 \text{ K} \quad T_2 = 25^\circ\text{C} + 273 = 298 \text{ K} \quad n_1 = n_2$$

$$P_1 = 1.00 \text{ atm} \quad P_2 = 0.951 \text{ atm}$$

$$\frac{P_1 V_1}{T_1} = \frac{P_2 V_2}{T_2}$$

$$V_2 = \frac{P_1 V_1 T_2}{T_1 P_2} = \frac{(1.00 \text{ atm})(1.462 \text{ L})(298 \text{ K})}{(273 \text{ K})(0.951 \text{ atm})} = 1.68 \text{ L}$$