

SAVANNAH  
[ ]  
HILL



# CONTENTS

---

|                      |       |
|----------------------|-------|
| NEXT Office          | 1-4   |
| Primrose Beach House | 5-8   |
| Social Station       | 9-11  |
| Hook Restaurant      | 12-16 |



Sketchup with Podium & Photoshop

# NEXT

DESIGN OFFICE- STEELCASE STUDENT COMPETITION





DESIGN OFFICE FLOOR PLAN

Revit & Photoshop

## NICHE

To find your niche is to find your comfort. In the past there has generally been a misconception that in order to get the utmost productivity from your employees, they can't be comfortable. But today, that isn't the case. The workplace has become a place of diversity, therefore everyone works differently. It was important for the design to incorporate multiple types of work environments so that no matter what they can find their niche where they feel they belong.

The concept of niche has an alternative meaning in the design world which is a recessed portion of the wall. So throughout the design, it was important to incorporate niches in areas that are both functional and useful such as in the design library to store away products, an area with niche seating for nomads of the office, and in the work café for a more private dining setting.







IDEATION ZONE, PHONE ROOMS, AND WORK STATIONS

SketchUp with Podium & Photoshop





NICHE AREA AND MAIL ROOM

SketchUp with Podium & Photoshop



CONFERENCE ROOM

SketchUp with Podium & Photoshop

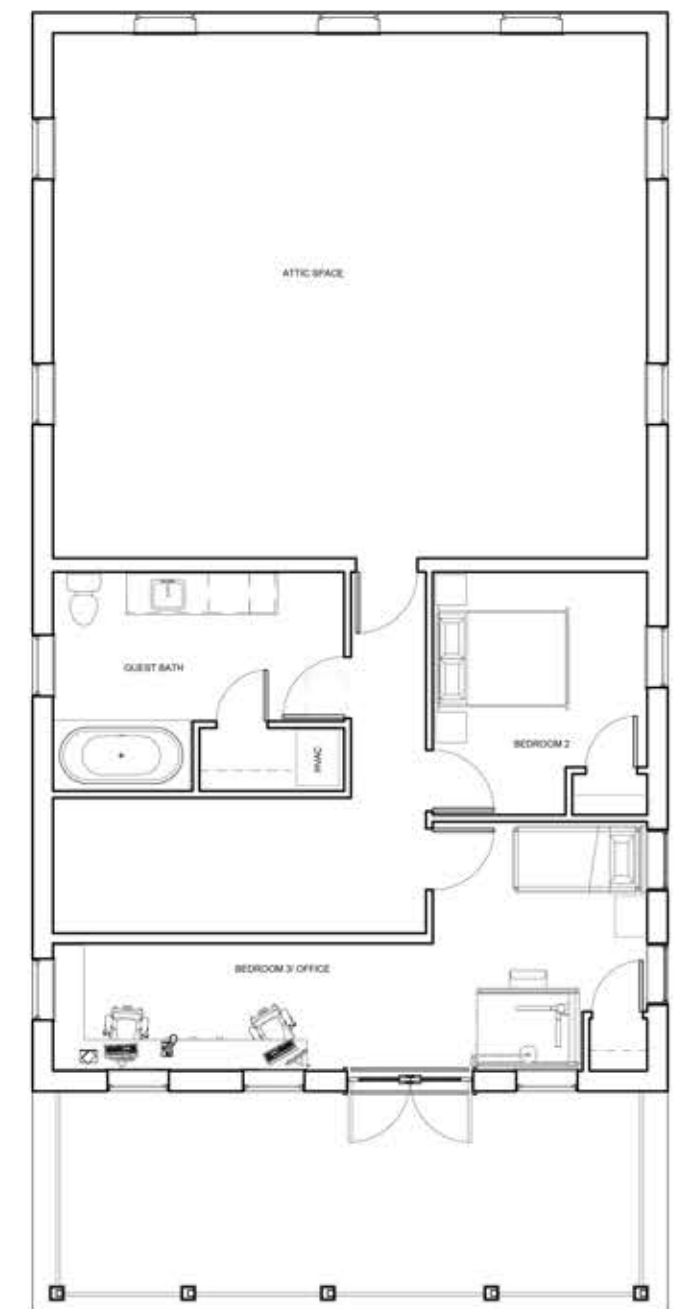




SketchUp with Podium & Photoshop

# PRIMROSE

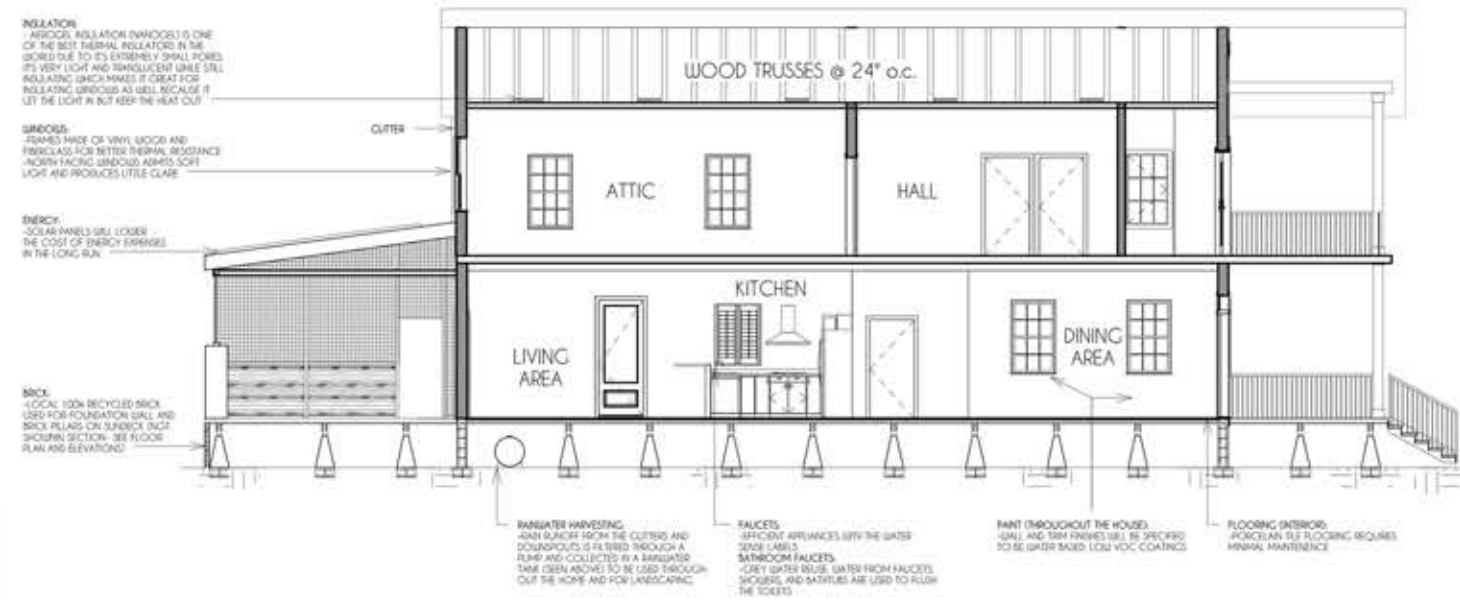
BEACH HOUSE











Revit

SketchUp with Podium & Photoshop





SketchUp with Podium & Photoshop

# SOCIAL STATION

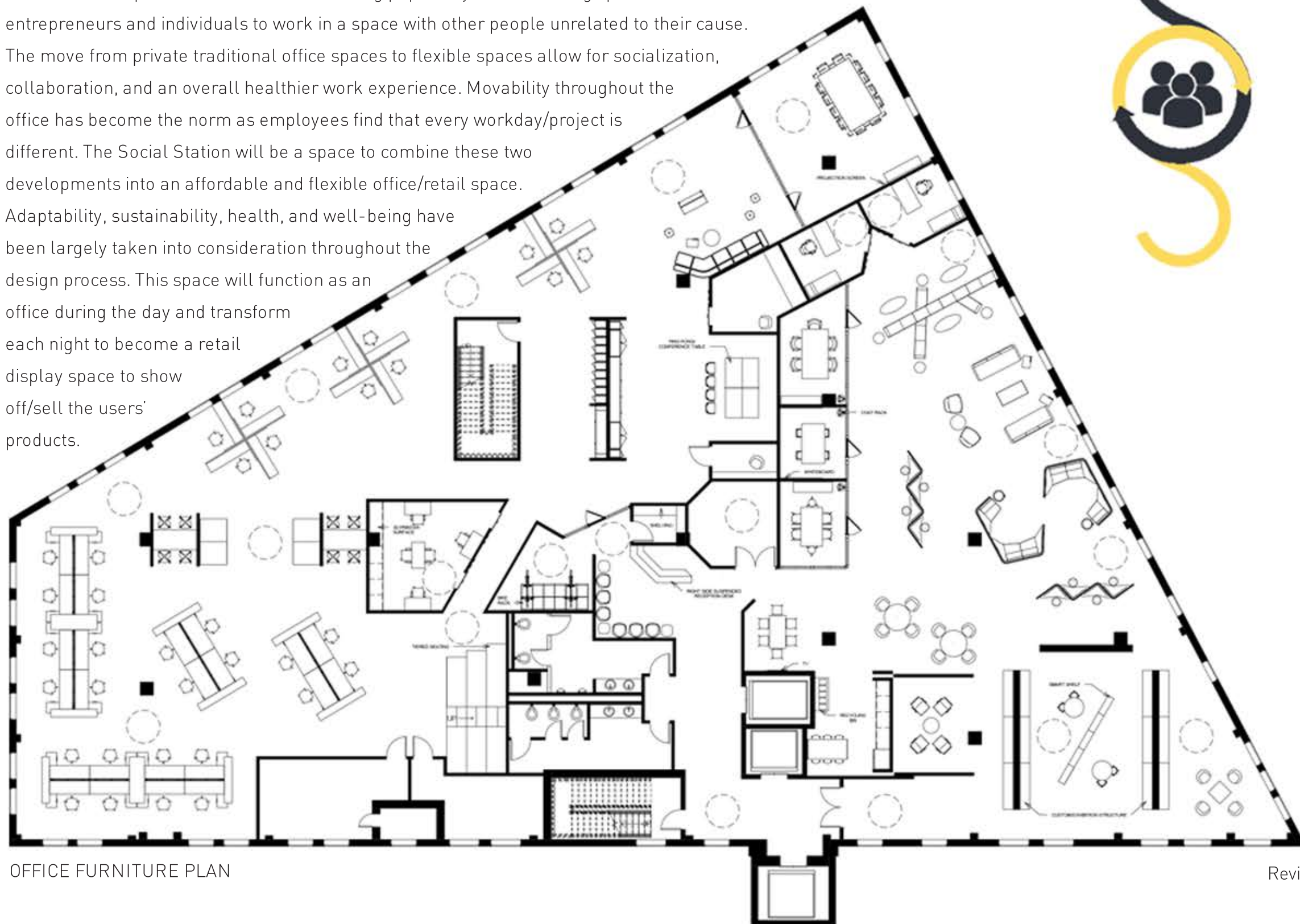
CO-WORKING OFFICE





INSPIRATION IMAGES

As technology and society have developed, so have the many jobs and spaces that users occupy. Social retail (social selling) has made a rise in popularity as traditional forms of shopping have been transformed. Another development has been the increasing popularity of co- working spaces. These allow for entrepreneurs and individuals to work in a space with other people unrelated to their cause. The move from private traditional office spaces to flexible spaces allow for socialization, collaboration, and an overall healthier work experience. Movability throughout the office has become the norm as employees find that every workday/project is different. The Social Station will be a space to combine these two developments into an affordable and flexible office/retail space. Adaptability, sustainability, health, and well-being have been largely taken into consideration throughout the design process. This space will function as an office during the day and transform each night to become a retail display space to show off/sell the users' products.

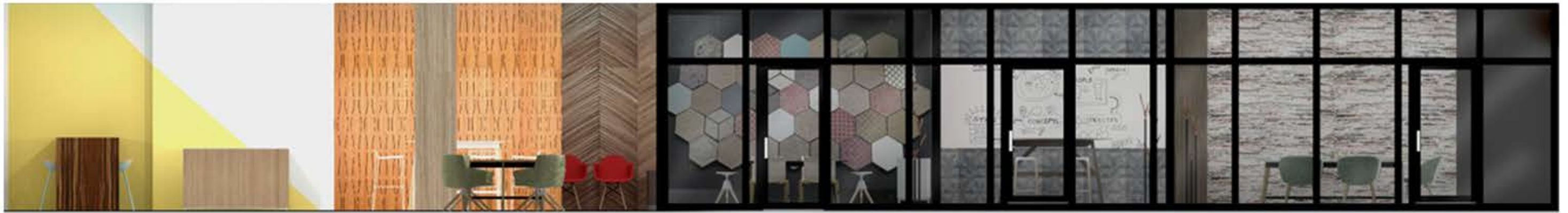


OFFICE FURNITURE PLAN



Revit





OFFICE ELEVATION

Revit & Photoshop



Rendered by: McKenzie Mayes







SketchUp with Podium & Photoshop

# HOOK RESTAURANT AND BAR

MEDITERRANEAN CUISINE



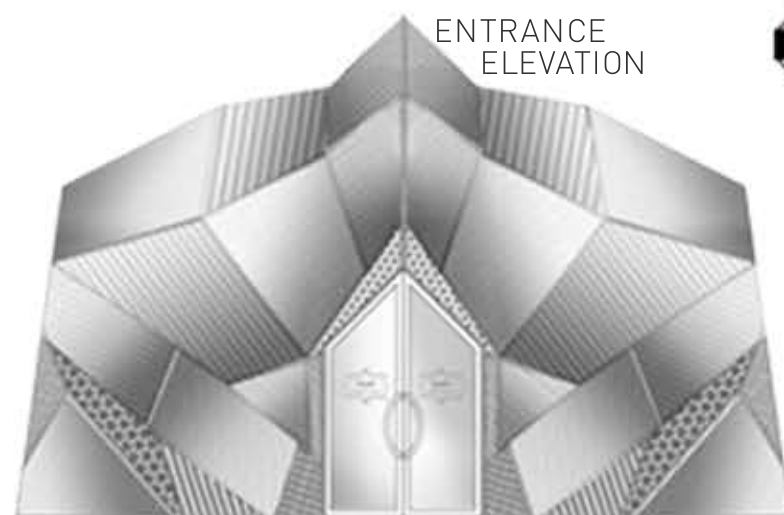


I N S P I R A T I O N I M A G E S

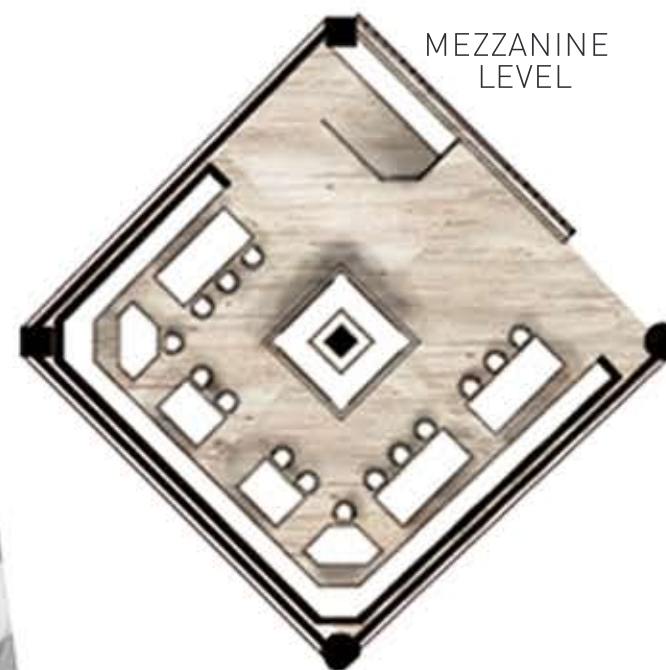
In this project, our team developed a restaurant environment that is both creative and innovative while also incorporating sustainability. Our focus will be to provide a space that continually increases in sales by providing a new concept that promotes healthy living and creativity. This restaurant will illustrate the importance and significance of the built environment to the human experience and behavior.

The 6,500 square foot space is split-level and is located on the first floor of a downtown boutique hotel. The space will have a front of house that will consist of a dining area, lounge, waiting area, and bar along with a back of house consisting of the kitchen, employee area and office.

Overall the space is a place where customers feel comfortable not only with the environment, but also the concept the restaurant stands for and the experience it provides.



AutoCAD & Photoshop



Rendered by: Erin Hoover

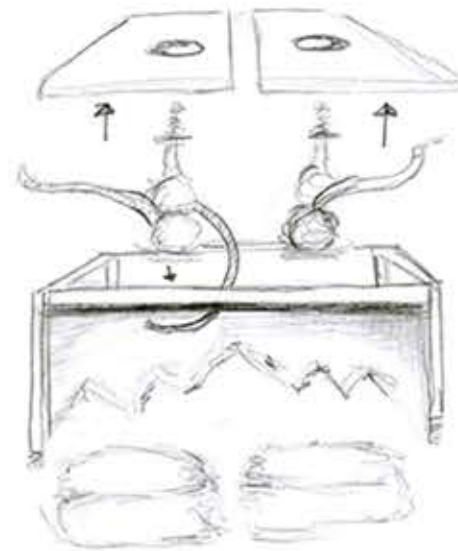




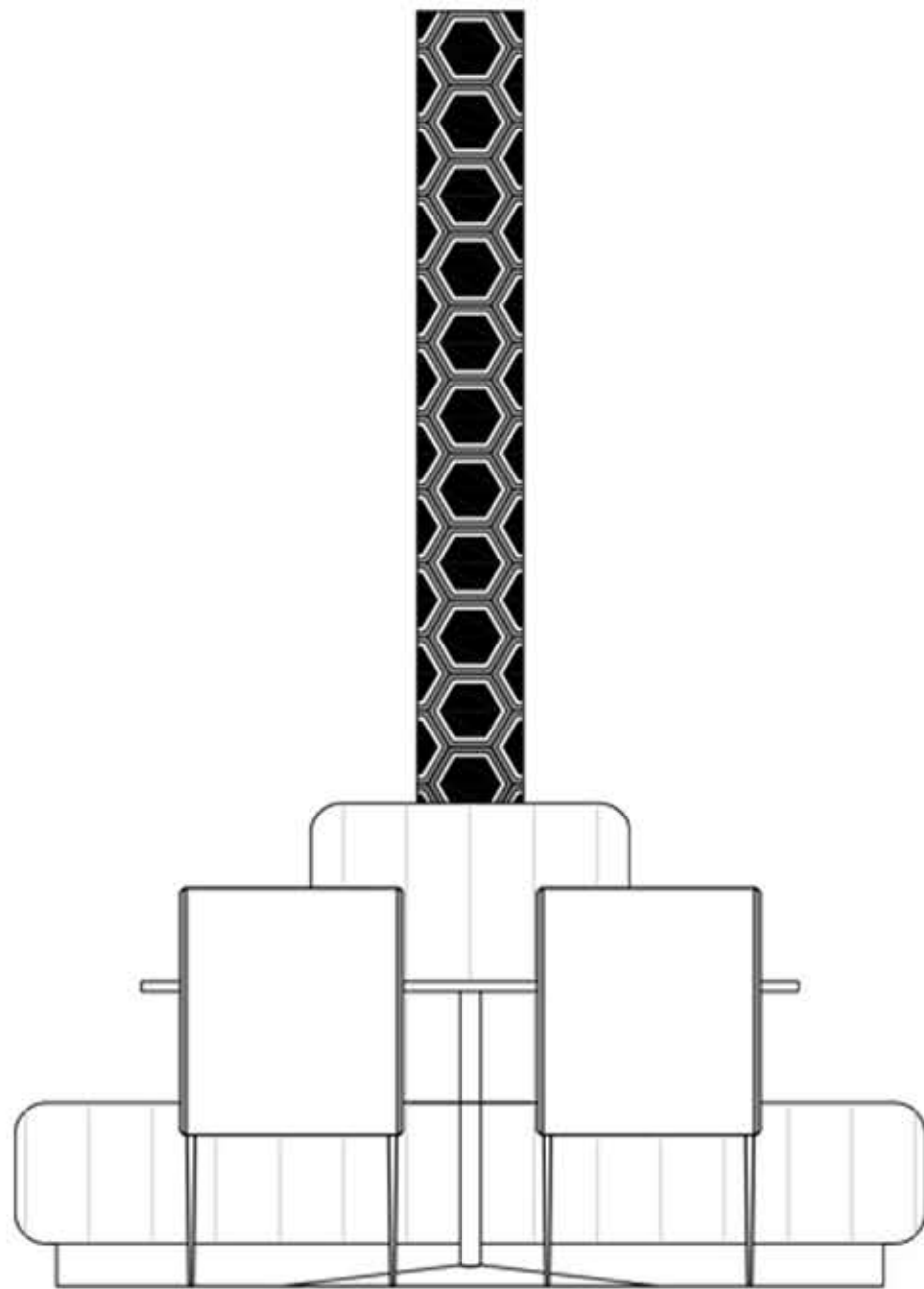
Rendered by: Erin Hoover



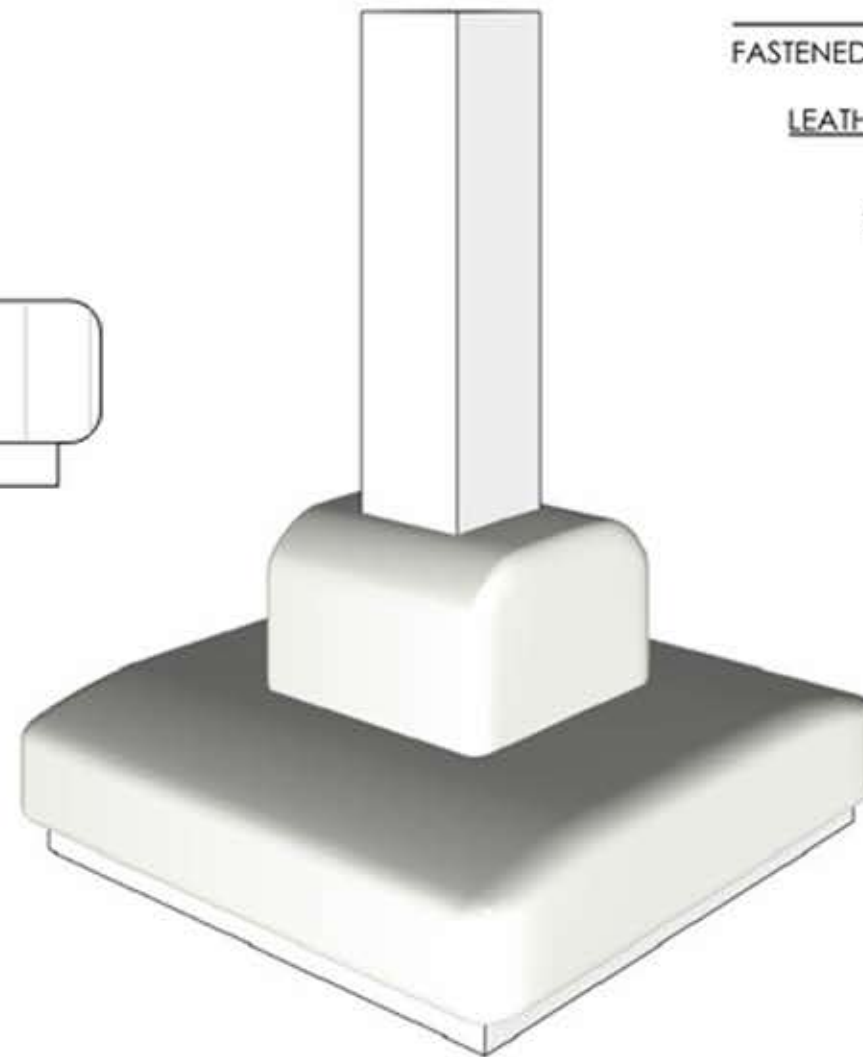
CUSTOM HOOKAH  
TABLE SKETCHES



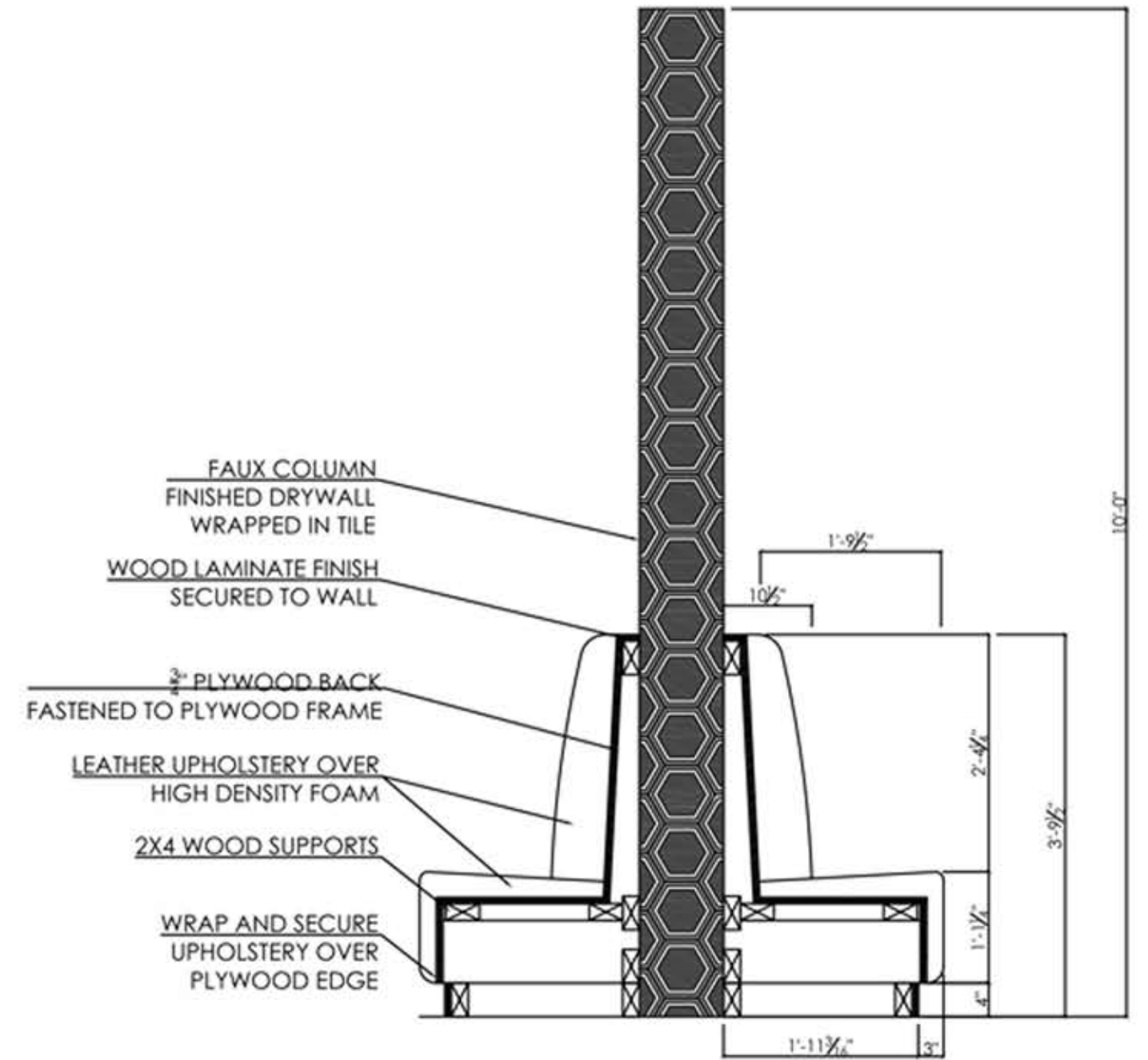




AutoCAD



SketchUp



AutoCAD

