

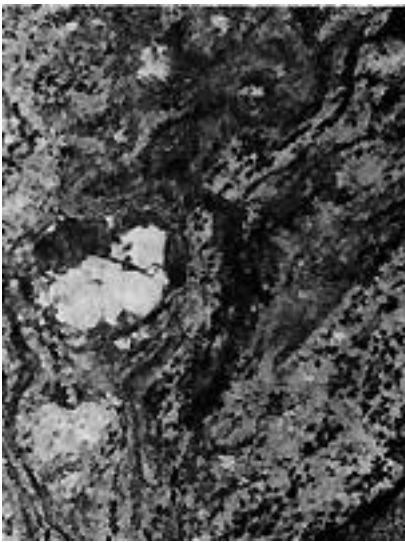
Porphyritic granite (Igneous)



Conglomeratic sandstone (Sedimentary)



Stylolitic seam in Tennessee "Marble"



Granite gneiss (Metamorphic)

**Figure 1**



Granite block being cut by a wire band saw.



Large metal disc used to provide a finely polished surface.



Carving of the polished stone using abrasive and high pressure nozzle.



Hand carving of stone.

**Figure 2**



**Figure 3.** The Hunter Museum of Arts sits above bluffs of Copper Ridge Dolomite (Knox Group) as exposed along the Tennessee River.



**Figure 4.** Massive Pennsylvanian aged sandstones on top of Lookout Mountain.



**Figure 5.** Deformed Ordovician limestones at Gold Point near Chickamauga Lake.



**Figure 6.** Stone Fort Quarry in downtown Chattanooga.

— Chattanooga Yesterday and Today Volume I  
Heiner Printing Company 1951



**Figure 7.** McCallie Avenue Entrance to UTC



**Figure 8.** Entrance to Confederate Cemetery, East 5th Street.