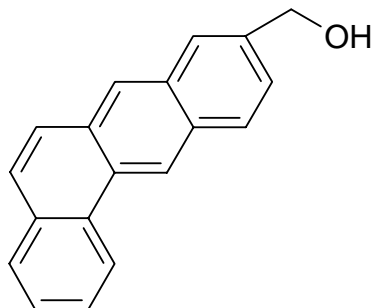
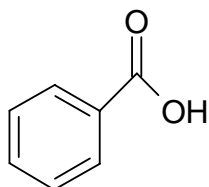


### Extra Homework Problems for Chapter 25

- Describe the basic components of a nucleotide.
- Explain the structure of DNA and how it is held together.
- What would be the base pair sequence for the following
  - UGGGCCAAU
  - TTTCGCGAAT
  - UAAACCCG
- What can affect the physical shape of proteins?
- What are monosaccharides and polysaccharides? Give an example of each.
- Predict whether or not the following molecules would be soluble in water and explain why?

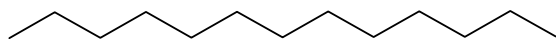


a.

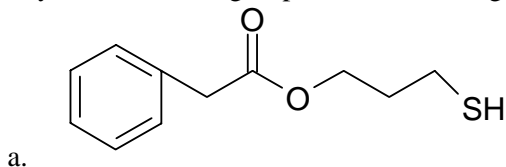


b.

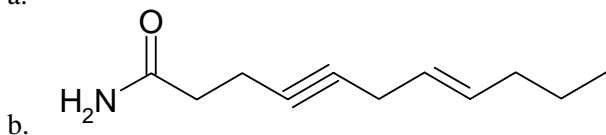
c.



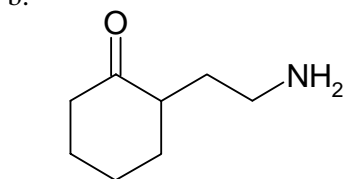
7. Identify the functional groups in the following molecules



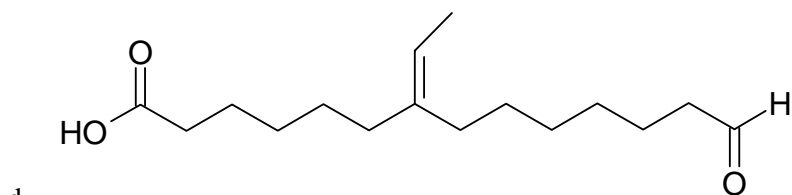
a.



b.



c.



d.