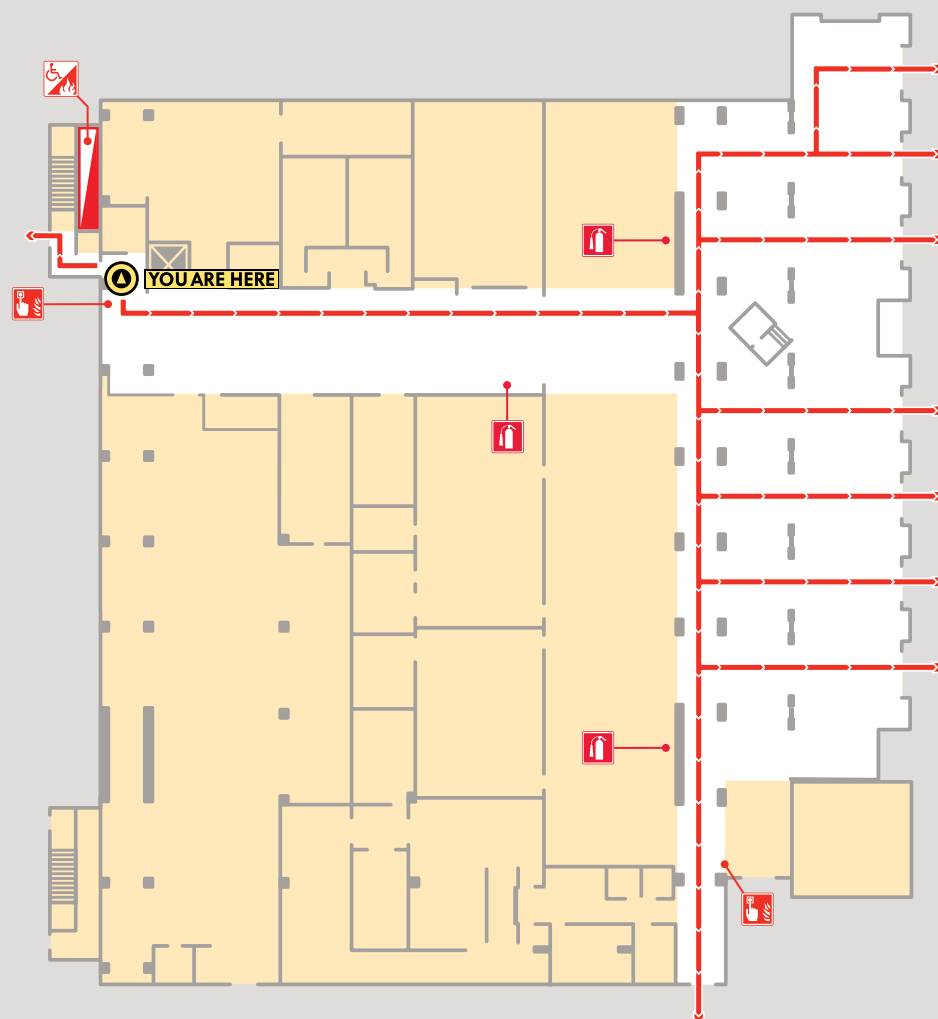




EVACUATION/SHELTER

1st Floor


Fire



- In the event of a fire alarm or other building evacuation —
1. Follow **EVACUATION ROUTES** .
 2. Leave the building immediately.
 3. Move at least 500 feet from the entrance .
 4. Be alert for emergency vehicles.



DO NOT re-enter before the "All Clear" is given.





- Evacuation Route 
- Fire Alarm 
- Extinguisher 
- Refuge Area 
- Evacuation Assembly Area 

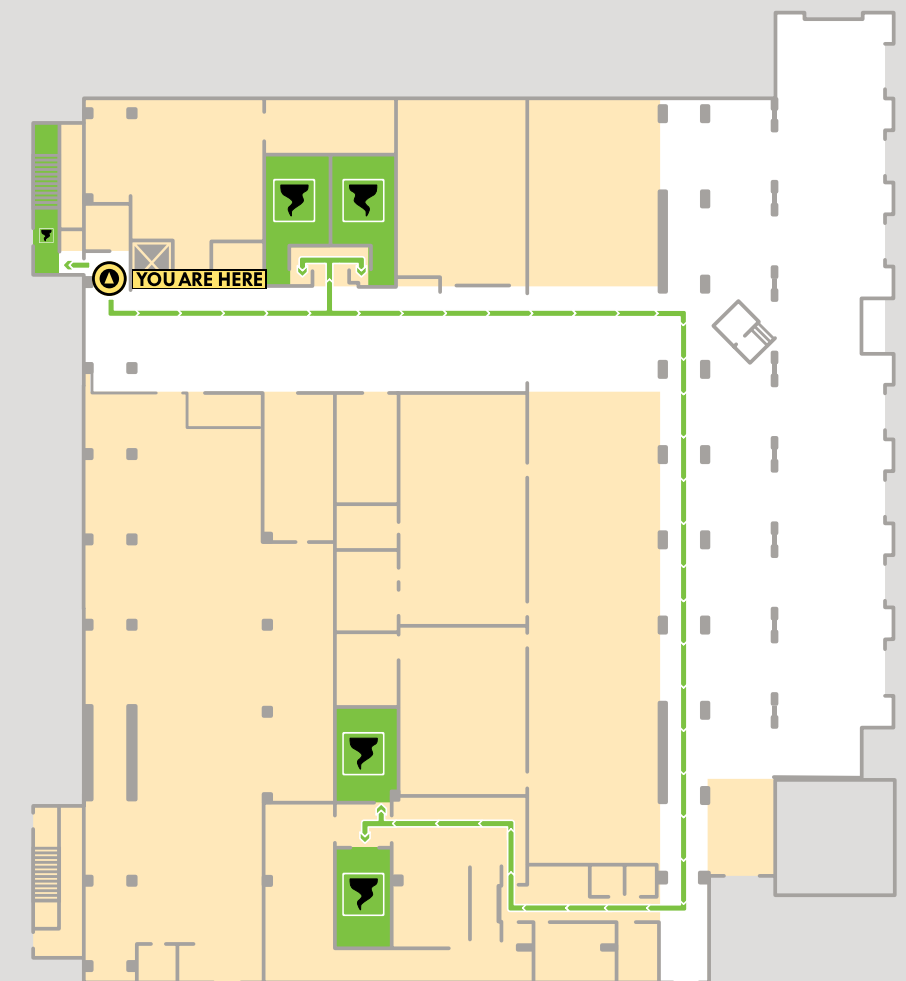
Tornado

When a Tornado Warning is issued—

1. Follow the designated **TORNADO ROUTE** .
2. Proceed to areas marked **STORM SHELTER** .
3. Avoid other areas.

DO NOT EXIT THE BUILDING.
STAY SHELTERED until you receive the "All Clear".

-  Tornado Route
-  Storm Shelter
-  Elevator



Lockdown

In the event of a campus lock down —

1. **STAY IN THE ROOM** you're in. If you are in the hallway, **GET INTO A ROOM.**
2. **LOCK OR BARRICADE THE DOOR**, and close and lock your windows and blinds.
3. **STAY LOW** on the floor and away from windows and doors.
4. Await instructions from Campus Police or other Authorized Personnel.

IN EMERGENCY DIAL 9-1-1

OR

425-HELP (4357) FOR UTC CAMPUS POLICE

Aquatic & Recreation Center (ARC)

First Floor

71 E. 4th Street Chattanooga, TN