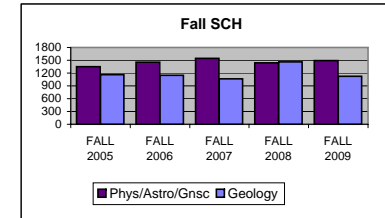
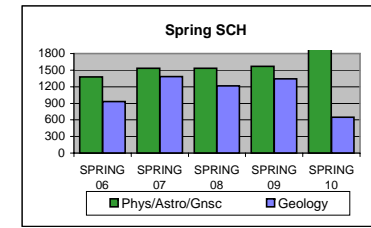


## UTC DEPARTMENT PROFILE: Physics, Geology & Astronomy

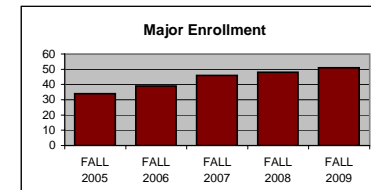
<u>STUDENT CREDIT HOUR PRODUCTION</u>	<u>FALL 2005</u>	<u>FALL 2006</u>	<u>FALL 2007</u>	<u>FALL 2008</u>	<u>FALL 2009</u>
LOWER - ASTRONOMY	156	160	161	179	185
UPPER - ASTRONOMY	0	0	0	0	0
LOWER - GENERAL SCIENCE	351	402	430	443	479
LOWER - PHYSICS	780	829	853	748	734
UPPER - PHYSICS	60	63	101	68	97
GRADUATE - PHYSICS	0	0	0	0	0
<b>TOTAL - PHYS/ASTR/GNSC</b>	<b>1347</b>	<b>1454</b>	<b>1545</b>	<b>1438</b>	<b>1495</b>
LOWER - GEOLOGY	1021	970	875	1258	910
UPPER - GEOLOGY	140	180	183	194	215
GRADUATE - GEOLOGY	3	0	6	9	1
<b>TOTAL - GEOLOGY</b>	<b>1164</b>	<b>1150</b>	<b>1064</b>	<b>1461</b>	<b>1126</b>
<b>GRAND TOTAL</b>	<b>2511</b>	<b>2604</b>	<b>2609</b>	<b>2899</b>	<b>2621</b>



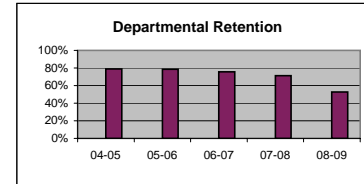
	<u>SPRING 06</u>	<u>SPRING 07</u>	<u>SPRING 08</u>	<u>SPRING 09</u>	<u>SPRING 10</u>
LOWER - ASTRONOMY	117	106	132	217	241
UPPER - ASTRONOMY	0	0	0	23	0
LOWER - GENERAL SCIENCE	406	476	505	566	1011
LOWER - PHYSICS	795	890	822	745	861
UPPER - PHYSICS	59	63	74	20	77
GRADUATE - PHYSICS	0	0	0	0	0
<b>TOTAL - PHYS/ASTR/GNSC</b>	<b>1377</b>	<b>1535</b>	<b>1533</b>	<b>1571</b>	<b>2190</b>
LOWER - GEOLOGY	785	1235	1081	1110	487
UPPER - GEOLOGY	147	131	129	235	160
GRADUATE - GEOLOGY	0	15	6	0	0
<b>TOTAL - GEOLOGY</b>	<b>932</b>	<b>1381</b>	<b>1216</b>	<b>1345</b>	<b>647</b>
<b>GRAND TOTAL</b>	<b>2309</b>	<b>2916</b>	<b>2749</b>	<b>2916</b>	<b>2837</b>



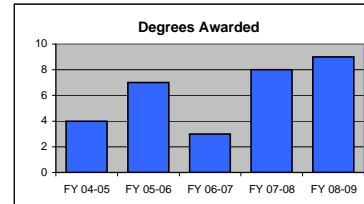
<u>MAJOR ENROLLMENT</u>	<u>FALL 2005</u>	<u>FALL 2006</u>	<u>FALL 2007</u>	<u>FALL 2008</u>	<u>FALL 2009</u>
BS GEOLOGY	19	20	22	27	33
BS PHYSICS	15	19	24	21	18
<b>TOTAL</b>	<b>34</b>	<b>39</b>	<b>46</b>	<b>48</b>	<b>51</b>



<u>DEPARTMENTAL RETENTION*</u>	<u>04-05</u>	<u>05-06</u>	<u>06-07</u>	<u>07-08</u>	<u>08-09</u>
*Enrolled majors returning to dept.	78.9%	78.6%	75.8%	71.4%	52.6%

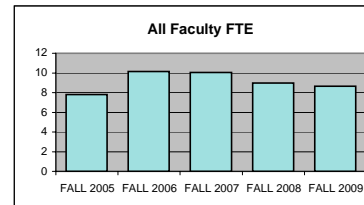


<u>DEGREES AWARDED</u>	<u>FY 04-05</u>	<u>FY 05-06</u>	<u>FY 06-07</u>	<u>FY 07-08</u>	<u>FY 08-09</u>
BS GEOLOGY	4	4	2	6	7
BS PHYSICS	0	3	1	2	2
<b>TOTAL</b>	<b>4</b>	<b>7</b>	<b>3</b>	<b>8</b>	<b>9</b>

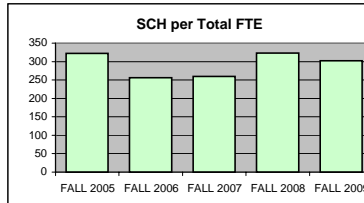


<u>FTE FACULTY</u>	<u>FALL 2005</u>	<u>FALL 2006</u>	<u>FALL 2007</u>	<u>FALL 2008</u>	<u>FALL 2009</u>
FULL-TIME Tenured/Tenure Track	6.50	8.49	6.50	7.25	7.50
FULL-TIME Non-Tenure Track	0.00	0.00	2.00	1.00	0.00
PART-TIME (Adjunct)	1.30	1.66	1.56	0.72	1.16
FT Teaching Overload*					0.00
<b>TOTAL</b>	<b>7.80</b>	<b>10.15</b>	<b>10.06</b>	<b>8.97</b>	<b>8.66</b>

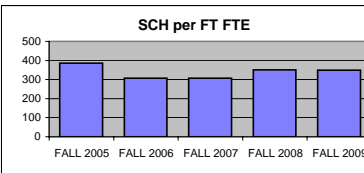
\*Teaching overload was separated from FT faculty FTE beginning in Fall 2009.



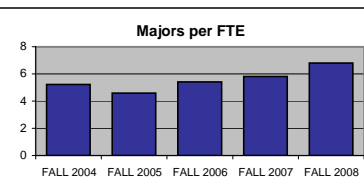
<u>SCH PER FTE FACULTY (ADJUNCT INCL)</u>	<u>FALL 2005</u>	<u>FALL 2006</u>	<u>FALL 2007</u>	<u>FALL 2008</u>	<u>FALL 2009</u>
	321.92	256.55	259.34	323.19	302.66



<u>SCH PER FULL-TIME FTE FACULTY</u> (includes both full-time figures above)	<u>FALL 2005</u>	<u>FALL 2006</u>	<u>FALL 2007</u>	<u>FALL 2008</u>	<u>FALL 2009</u>
	386.31	306.71	306.94	351.39	349.47



<u>MAJORS PER FULL-TIME FTE FACULTY</u> (includes both full-time figures above)	<u>FALL 2004</u>	<u>FALL 2005</u>	<u>FALL 2006</u>	<u>FALL 2007</u>	<u>FALL 2008</u>
	5.23	4.59	5.41	5.82	6.80



<b>BUDGET ALLOCATIONS</b>	<b>7/1/2005</b>	<b>7/1/2006</b>	<b>7/1/2007</b>	<b>7/1/2008</b>	<b>7/1/2009</b>
Base budget figures as of 07/01, beginning of each fiscal year.					
<b>SALARIES - GEOSCIENCES</b>	\$248,250	\$287,187	\$293,896	\$313,607	\$261,917
<b>SALARIES - PHYSICS</b>	\$288,455	\$289,906	\$303,234	\$356,853	\$355,590
<b>OPERATING - GEOSCIENCES</b>	\$11,778	\$17,427	\$17,427	\$20,460	\$17,289
<b>OPERATING - PHYSICS</b>	\$15,305	\$17,964	\$17,964	\$19,276	\$18,226
<b>TOTAL</b>	<b>\$563,788</b>	<b>\$612,484</b>	<b>\$632,521</b>	<b>\$710,196</b>	<b>\$653,022</b>

<b>ACTUAL YEAR END EXPENDITURES</b>	<b>05-06</b>	<b>06-07</b>	<b>07-08</b>	<b>08-09</b>
	\$828,339	\$912,949	\$1,008,478	\$1,025,277

Includes benefits, longevity pay and adjunct salaries for fiscal year.

<b>ADJUNCT SALARIES</b>	<b>05-06</b>	<b>06-07</b>	<b>07-08</b>	<b>08-09</b>	<b>09-10</b>
<b>FALL</b>	\$9,984	\$9,792	\$7,400	\$7,200	\$10,800
<b>SPRING</b>	\$7,184	\$9,167	\$4,800	\$9,867	\$8,400

<b>EXTERNAL GRANT FUNDING</b>	<b>04-05</b>	<b>05-06</b>	<b>06-07</b>	<b>07-08</b>	<b>08-09</b>
<b>NUMBER AWARDED</b>	1	3	0	2	1
<b>AMOUNT AWARDED</b>	\$52,664	\$117,044	\$0	\$43,746	\$444

Grant funding figures are for fiscal year completed just before current Fall semester.

<b>COST PER SCH (Fall &amp; Spring)</b>	<b>04-05</b>	<b>05-06</b>	<b>06-07</b>	<b>07-08</b>	<b>08-09</b>
Actual Expenditures/(Fall SCH + Spring SCH)					
<b>Department</b>	\$161.19	\$172.36	\$168.01	\$182.53	\$178.74
<b>College</b>	\$127.37	\$130.60	\$133.94	\$136.93	\$139.01
<b>University</b>	\$145.95	\$152.71	\$159.26	\$162.48	\$160.89

**SCHOLARLY WORKS (T/TT ONLY)**

	<b>Cal Yr 2007</b>	<b>Cal Yr 2008</b>	<b>Cal Yr 2009</b>
<b>Paper Presentations</b>	0	2	1
<b>Journal Articles</b>	1	2	0
<b>Books Authored</b>	0	0	0
<b>Books Edited</b>	0	0	0
<b>Juried Shows, Performances</b>	0	0	0
<b>Works Cited</b> (added 2009)			3
<b>External Commissions</b> (added 2009)			0
<b>All Scholarly Works Total</b>	<b>1</b>	<b>4</b>	<b>4</b>

**SCHOLARSHIP PER FAC FTE (T/TT ONLY)**

<b>Department</b>	0.15	0.55	0.53
<b>College</b>	3.92	3.40	6.39
<b>University</b>	3.58	3.20	5.35

