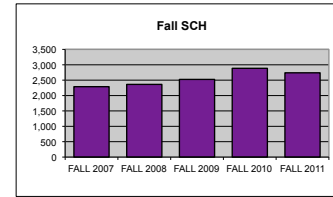
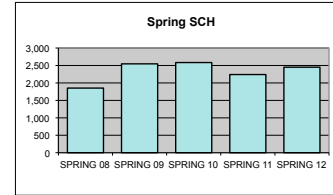


UTC DEPARTMENT PROFILE: Philosophy & Religion

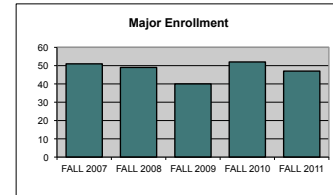
STUDENT CREDIT HOUR PRODUCTION	FALL 2007	FALL 2008	FALL 2009	FALL 2010	FALL 2011
LOWER	1,632	1,743	1,821	2,124	1,869
UPPER	657	621	703	762	870
GRADUATE	0	0	0	0	0
TOTAL	2,289	2,364	2,524	2,886	2,739



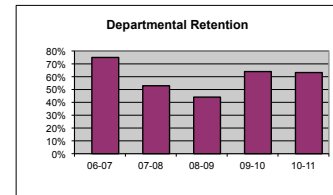
	SPRING 08	SPRING 09	SPRING 10	SPRING 11	SPRING 12
LOWER	1,302	1,848	1,806	1,833	1,578
UPPER	550	696	778	407	872
GRADUATE	0	3	0	0	0
TOTAL	1,852	2,547	2,584	2,240	2,450



MAJOR ENROLLMENT	FALL 2007	FALL 2008	FALL 2009	FALL 2010	FALL 2011
BA PHILOSOPHY & RELIGION	51	49	40	52	47

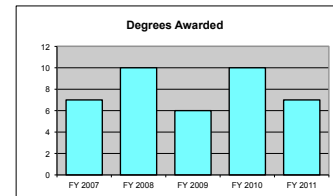


DEPARTMENTAL RETENTION*	06-07	07-08	08-09	09-10	10-11
*Enrolled undergraduate majors returning to major	75.0%	52.9%	44.1%	64.0%	63.2%



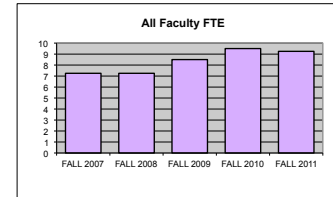
DEGREES AWARDED	FY 2007	FY 2008	FY 2009	FY 2010	FY 2011
BA PHILOSOPHY & RELIGION	7	10	6	10	7

Degrees awarded between July 1st and June 30th of following year.

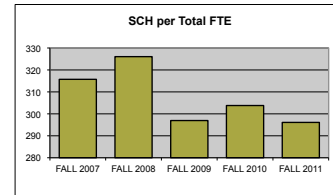


<b>FTE FACULTY</b>	<b>FALL 2007</b>	<b>FALL 2008</b>	<b>FALL 2009</b>	<b>FALL 2010</b>	<b>FALL 2011</b>
FULL-TIME Tenured/Tenure Track	5.50	4.25	5.00	6.00	5.00
FULL-TIME Non-Tenure Track	1.00	2.00	2.00	2.00	3.00
PART-TIME (Adjunct)	0.75	1.00	1.50	1.50	1.25
FT Teaching Overload*			0.00	0.00	0.00
<b>TOTAL</b>	<b>7.25</b>	<b>7.25</b>	<b>8.50</b>	<b>9.50</b>	<b>9.25</b>

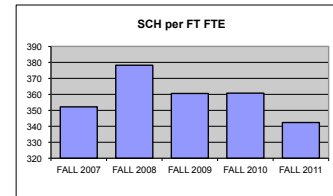
\*Teaching overload was separated from FT faculty FTE beginning in Fall 2009.



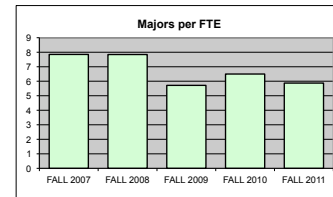
<b>SCH PER FTE FACULTY (ADJUNCT INCL)</b>	<b>FALL 2007</b>	<b>FALL 2008</b>	<b>FALL 2009</b>	<b>FALL 2010</b>	<b>FALL 2011</b>
	315.72	326.07	296.94	303.79	296.11



<b>SCH PER FULL-TIME FTE FACULTY</b> (includes both full-time figures and TOL above)	<b>FALL 2007</b>	<b>FALL 2008</b>	<b>FALL 2009</b>	<b>FALL 2010</b>	<b>FALL 2011</b>
	352.15	378.24	360.57	360.75	342.38



<b>MAJORS PER FULL-TIME FTE FACULTY</b> (includes both full-time figures and TOL above)	<b>FALL 2007</b>	<b>FALL 2008</b>	<b>FALL 2009</b>	<b>FALL 2010</b>	<b>FALL 2011</b>
	7.85	7.84	5.71	6.50	5.88



<b>BUDGET ALLOCATIONS</b>	<b>FY 2007</b>	<b>FY 2008</b>	<b>FY 2009</b>	<b>FY 2010</b>	<b>FY 2011</b>
Base budget figures as of 07/01, beginning of each fiscal year.					
<b>SALARIES</b>	\$335,468	\$345,990	\$344,043	\$423,893	\$444,467
<b>OPERATING</b>	\$9,000	\$9,000	\$11,327	\$7,845	\$9,586
<b>TOTAL</b>	<b>\$344,468</b>	<b>\$354,990</b>	<b>\$355,370</b>	<b>\$431,738</b>	<b>\$454,053</b>

<b>ACTUAL YEAR END EXPENDITURES</b>	<b>FY 2007</b>	<b>FY 2008</b>	<b>FY 2009</b>	<b>FY 2010</b>	<b>FY 2011</b>
Includes benefits and longevity pay for fiscal year.					
	\$489,774	\$504,802	\$588,827	\$591,658	\$657,465

<b>ADJUNCT SALARIES</b>	<b>07-08</b>	<b>08-09</b>	<b>09-10</b>	<b>10-11</b>	<b>11-12</b>
<b>FALL</b>	\$4,000	\$8,000	\$12,000	\$12,000	\$10,000
<b>SPRING</b>	\$4,000	\$6,000	\$12,000	\$16,000	\$6,000

<b>EXTERNAL GRANT FUNDING</b>	<b>FY 2007</b>	<b>FY 2008</b>	<b>FY 2009</b>	<b>FY 2010</b>	<b>FY 2011</b>
<b>NUMBER AWARDED</b>	0	2	0	1	1
<b>AMOUNT AWARDED</b>	\$0	\$202,295	\$0	\$209,756	\$150,000
Grant funding figures are for fiscal year completed just before current Fall semester.					

<b>COST PER SCH (Fall &amp; Spring)</b>	<b>FY 2007</b>	<b>FY 2008</b>	<b>FY 2009</b>	<b>FY 2010</b>	<b>FY 2011</b>
(Actual Expenditures + Fall Adj Salaries + Spring Adj Salaries)/(Fall SCH + Spring SCH)					
<b>Department</b>	\$114.01	\$123.84	\$122.75	\$120.53	\$133.72
<b>College</b>	\$138.93	\$140.89	\$136.05	\$118.75	\$124.24
<b>University</b>	\$164.98	\$162.74	\$157.45	\$141.76	\$145.63

<b>SCHOLARLY WORKS (T/TT ONLY)</b>	<b>Cal Yr 2007</b>	<b>Cal Yr 2008</b>	<b>Cal Yr 2009</b>	<b>Cal Yr 2010</b>	<b>Cal Yr 2011</b>
<b>Paper Presentations</b>	2	15	8	16	14
<b>Journal Articles</b>	15	12	19	14	13
<b>Books Authored</b>	2	1	0	3	1
<b>Books Edited</b>	3	0	0	0	0
<b>Juried Shows, Performances</b>	0	2	0	0	0
<b>Works Cited</b> (added 2009)			6	2	6
<b>External Commissions</b> (added 2009)			0	0	0
<b>All Scholarly Works Total</b>	<b>22</b>	<b>30</b>	<b>33</b>	<b>35</b>	<b>34</b>

<b>SCHOLARSHIP PER FAC FTE (T/TT ONLY)</b>	<b>FY 2007</b>	<b>FY 2008</b>	<b>FY 2009</b>	<b>FY 2010</b>	<b>FY 2011</b>
<b>Department</b>	4.00	7.06	6.60	5.83	6.80
<b>College</b>	3.88	3.40	6.39	5.42	5.73
<b>University</b>	3.53	3.17	5.35	4.87	8.36

