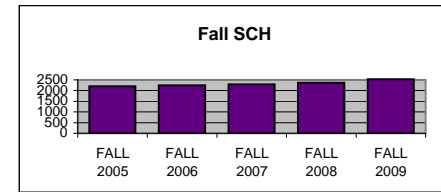
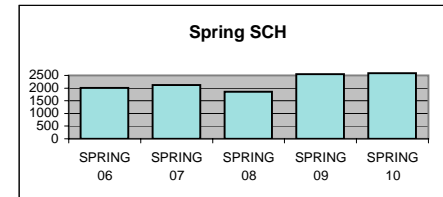


UTC DEPARTMENT PROFILE: Philosophy & Religion

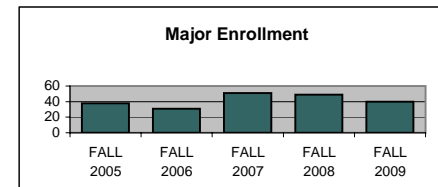
<u>STUDENT CREDIT HOUR PRODUCTION</u>	<u>FALL 2005</u>	<u>FALL 2006</u>	<u>FALL 2007</u>	<u>FALL 2008</u>	<u>FALL 2009</u>
LOWER	1626	1776	1632	1743	1821
UPPER	571	464	657	621	703
GRADUATE	3	0	0	0	0
TOTAL	2200	2240	2289	2364	2524



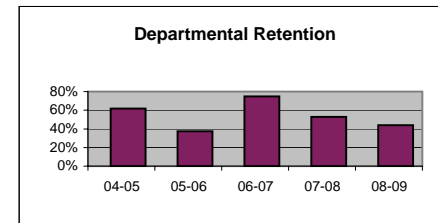
	<u>SPRING 06</u>	<u>SPRING 07</u>	<u>SPRING 08</u>	<u>SPRING 09</u>	<u>SPRING 10</u>
LOWER	1497	1659	1302	1848	1806
UPPER	516	464	550	696	778
GRADUATE	0	3	0	3	0
TOTAL	2013	2126	1852	2547	2584



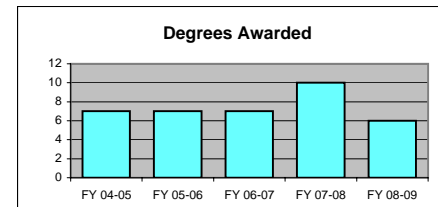
<u>MAJOR ENROLLMENT</u>	<u>FALL 2005</u>	<u>FALL 2006</u>	<u>FALL 2007</u>	<u>FALL 2008</u>	<u>FALL 2009</u>
BA PHILOSOPHY & RELIGION	38	31	51	49	40



<u>DEPARTMENTAL RETENTION*</u>	<u>04-05</u>	<u>05-06</u>	<u>06-07</u>	<u>07-08</u>	<u>08-09</u>
*Enrolled majors returning to dept.	61.9%	37.5%	75.0%	52.9%	44.1%

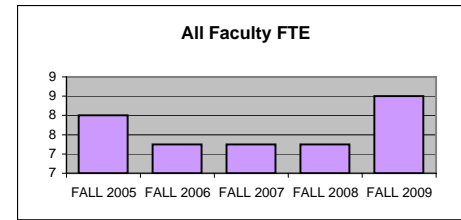


<u>DEGREES AWARDED</u>	<u>FY 04-05</u>	<u>FY 05-06</u>	<u>FY 06-07</u>	<u>FY 07-08</u>	<u>FY 08-09</u>
BA PHILOSOPHY & RELIGION	7	7	7	10	6

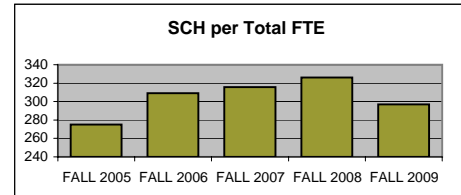


FTE FACULTY	FALL 2005	FALL 2006	FALL 2007	FALL 2008	FALL 2009
FULL-TIME Tenured/Tenure Track	6.50	5.50	5.50	4.25	5.00
FULL-TIME Non-Tenure Track	1.00	1.00	1.00	2.00	2.00
PART-TIME (Adjunct)	0.50	0.75	0.75	1.00	1.50
FT Teaching Overload*					0.00
TOTAL	8.00	7.25	7.25	7.25	8.50

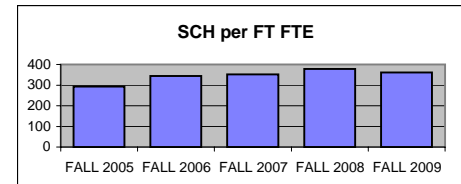
*Teaching overload was separated from FT faculty FTE beginning in Fall 2009.



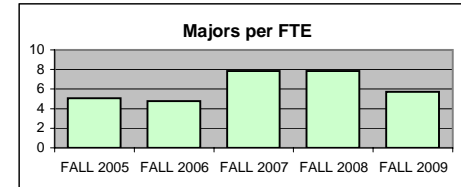
SCH PER FTE FACULTY (ADJUNCT INCL)	FALL 2005	FALL 2006	FALL 2007	FALL 2008	FALL 2009
	275.00	308.97	315.72	326.07	296.94



SCH PER FULL-TIME FTE FACULTY (includes both full-time figures above)	FALL 2005	FALL 2006	FALL 2007	FALL 2008	FALL 2009
	293.33	344.62	352.15	378.24	360.57



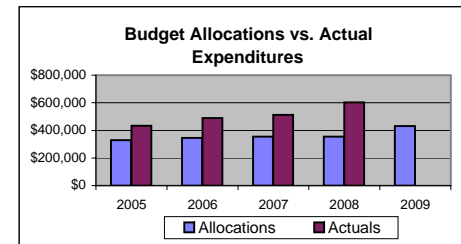
MAJORS PER FULL-TIME FTE FACULTY (includes both full-time figures above)	FALL 2005	FALL 2006	FALL 2007	FALL 2008	FALL 2009
	5.07	4.77	7.85	7.84	5.71



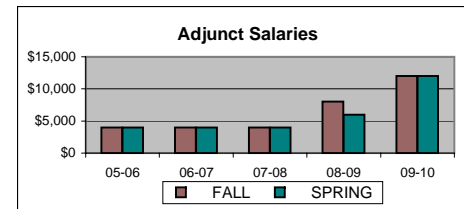
BUDGET ALLOCATIONS	7/1/2005	7/1/2006	7/1/2007	7/1/2008	7/1/2009
Base budget figures as of 07/01, beginning of each fiscal year.					
SALARIES	\$322,886	\$335,468	\$345,990	\$344,043	\$423,893
OPERATING	\$5,772	\$9,000	\$9,000	\$11,327	\$7,845
TOTAL	\$328,658	\$344,468	\$354,990	\$355,370	\$431,738

ACTUAL YEAR END EXPENDITURES	05-06	06-07	07-08	08-09
	\$433,267	\$489,774	\$512,802	\$602,827

Includes benefits, longevity pay and adjunct salaries for fiscal year.



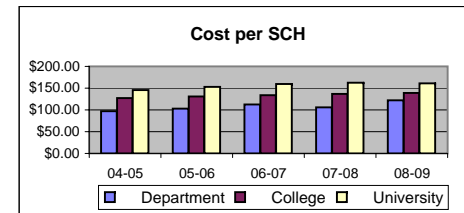
<u>ADJUNCT SALARIES</u>	<u>05-06</u>	<u>06-07</u>	<u>07-08</u>	<u>08-09</u>	<u>09-10</u>
FALL	\$4,000	\$4,000	\$4,000	\$8,000	\$12,000
SPRING	\$4,000	\$4,000	\$4,000	\$6,000	\$12,000



<u>EXTERNAL GRANT FUNDING</u>	<u>04-05</u>	<u>05-06</u>	<u>06-07</u>	<u>07-08</u>	<u>08-09</u>
NUMBER AWARDED	0	1	0	2	0
AMOUNT AWARDED	\$0	\$180,943	\$0	\$202,295	\$0

Grant funding figures are for fiscal year completed just before current Fall semester.

<u>COST PER SCH (Fall & Spring)</u> Actual Expenditures/(Fall SCH + Spring SCH)	<u>04-05</u>	<u>05-06</u>	<u>06-07</u>	<u>07-08</u>	<u>08-09</u>
Department	\$96.90	\$102.84	\$112.18	\$106.04	\$121.83
College	\$127.37	\$130.60	\$133.94	\$136.93	\$139.01
University	\$145.95	\$152.71	\$159.26	\$162.48	\$160.89



<u>SCHOLARLY WORKS (T/TT ONLY)</u>	<u>Cal Yr 2007</u>	<u>Cal Yr 2008</u>	<u>Cal Yr 2009</u>
Paper Presentations	2	15	8
Journal Articles	15	12	19
Books Authored	2	1	0
Books Edited	3	0	0
Juried Shows, Performances	0	2	0
Works Cited (added 2009)			6
External Commissions (added 2009)			0
All Scholarly Works Total	22	30	33

<u>SCHOLARSHIP PER FAC FTE (T/TT ONLY)</u>	<u>Cal Yr 2007</u>	<u>Cal Yr 2008</u>	<u>Cal Yr 2009</u>
Department	4.00	7.06	6.60
College	3.92	3.40	6.39
University	3.58	3.20	5.35