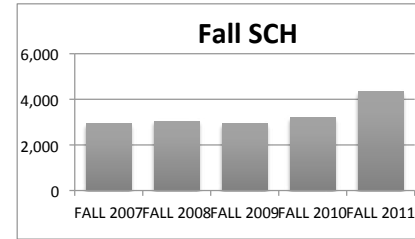
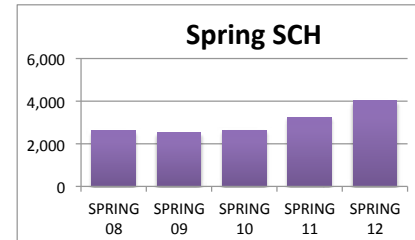


UTC DEPARTMENT PROFILE: Nursing

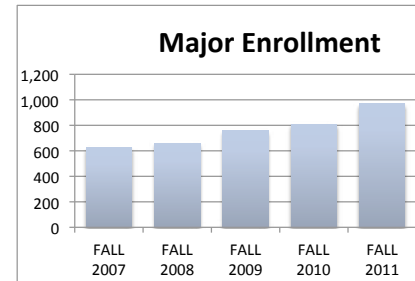
<u>STUDENT CREDIT HOUR PRODUCTION</u>	<u>FALL 2007</u>	<u>FALL 2008</u>	<u>FALL 2009</u>	<u>FALL 2010</u>	<u>FALL 2011</u>
LOWER	702	870	819	1,217	1,533
UPPER	1,379	1,313	1,341	1,346	1,754
GRADUATE	856	861	763	619	1,053
TOTAL	2,937	3,044	2,923	3,182	4,340



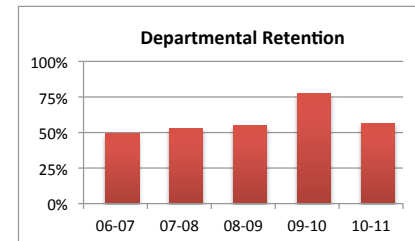
	<u>SPRING 08</u>	<u>SPRING 09</u>	<u>SPRING 10</u>	<u>SPRING 11</u>	<u>SPRING 12</u>
LOWER	588	596	690	982	1,093
UPPER	1,456	1,348	1,378	1,538	1,901
GRADUATE	571	583	564	735	1,028
TOTAL	2,615	2,527	2,632	3,255	4,022



<u>MAJOR ENROLLMENT</u>	<u>FALL 2007</u>	<u>FALL 2008</u>	<u>FALL 2009</u>	<u>FALL 2010</u>	<u>FALL 2011</u>
PRE NURSING	400	399	500	535	563
BS NURSING	130	160	161	195	300
PM CRNA	3	1	1	0	0
PM FAMILY NURSE PRACTITIONER	3	2	2	2	0
PM NURSE ANESTHESIA CERT				2	1
MSN ANESTHESIA	51	55	57	42	50
MSN EDUCATION			1	0	0
MSN FAMILY NURSE PRACTITIONER	38	43	37	33	38
DNP FAMILY NURSE PRACTITIONER					16
TOTAL	625	660	759	809	968

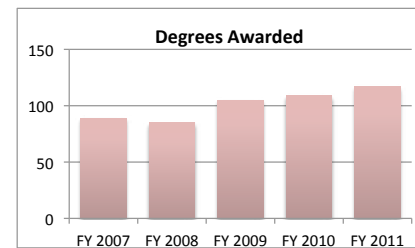


<u>DEPARTMENTAL RETENTION*</u>	<u>06-07</u>	<u>07-08</u>	<u>08-09</u>	<u>09-10</u>	<u>10-11</u>
*Enrolled undergraduate majors and pre-majors returning to dept.	49.1%	53.0%	55.2%	77.4%	56.5%

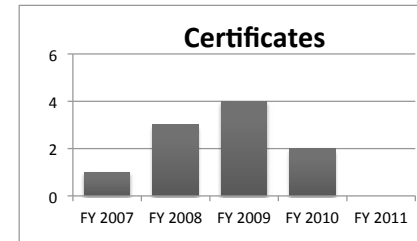


<u>DEGREES AWARDED</u>	<u>FY 2007</u>	<u>FY 2008</u>	<u>FY 2009</u>	<u>FY 2010</u>	<u>FY 2011</u>
BS NURSING	56	49	69	71	65
MSN ANESTHESIA	26	26	20	25	25
MSN FAMILY NURSE PRACTITIONER	7	10	16	13	27
TOTAL	89	85	105	109	117

Degrees awarded between July 1st and June 30th of following year.

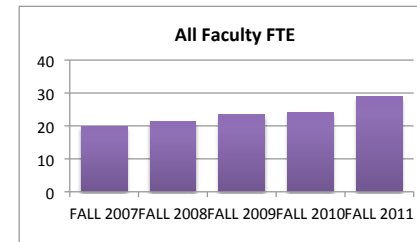


<u>CERTIFICATES AWARDED</u>	<u>FY 2007</u>	<u>FY 2008</u>	<u>FY 2009</u>	<u>FY 2010</u>	<u>FY 2011</u>
PM CERT: NURSE ANESTHESIA	1	2	2	1	0
PM CERT: FAM. NURSE PRACTITIONER	0	1	2	1	0
TOTAL	1	3	4	2	0

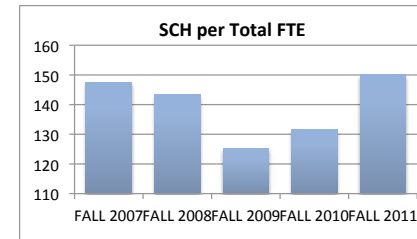


<u>FTE FACULTY</u>	<u>FALL 2007</u>	<u>FALL 2008</u>	<u>FALL 2009</u>	<u>FALL 2010</u>	<u>FALL 2011</u>
FULL-TIME Tenured/Tenure Track	11.50	10.50	10.50	9.50	10.50
FULL-TIME Non-Tenure Track	6.25	8.00	10.00	11.00	15.00
PART-TIME (Adjunct)	2.16	2.75	2.58	3.66	3.42
FT Teaching Overload*			0.25	0.00	0.00
TOTAL	19.91	21.25	23.33	24.16	28.92

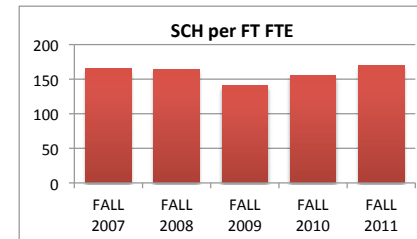
*Teaching overload was separated from FT faculty FTE beginning in Fall 2009.



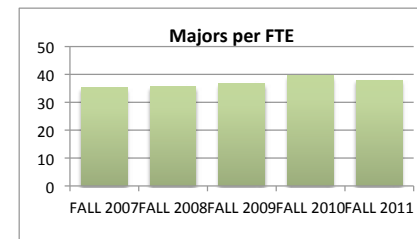
<u>SCH PER FTE FACULTY (ADJUNCT INCL)</u>	<u>FALL 2007</u>	<u>FALL 2008</u>	<u>FALL 2009</u>	<u>FALL 2010</u>	<u>FALL 2011</u>
	147.51	143.25	125.29	131.71	150.07



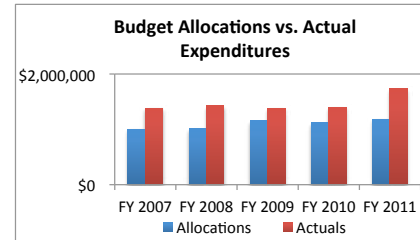
<u>SCH PER FULL-TIME FTE FACULTY</u> (includes both full-time figures and TOL above)	<u>FALL 2007</u>	<u>FALL 2008</u>	<u>FALL 2009</u>	<u>FALL 2010</u>	<u>FALL 2011</u>
	165.46	164.54	140.87	155.22	170.20



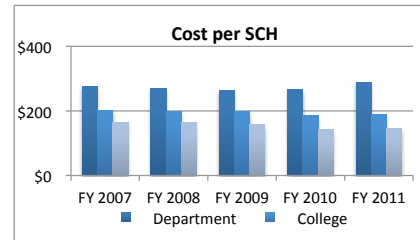
<u>MAJORS PER FULL-TIME FTE FACULTY</u> (includes both full-time figures and TOL above)	<u>FALL 2007</u>	<u>FALL 2008</u>	<u>FALL 2009</u>	<u>FALL 2010</u>	<u>FALL 2011</u>
	35.21	35.68	36.58	39.46	37.96



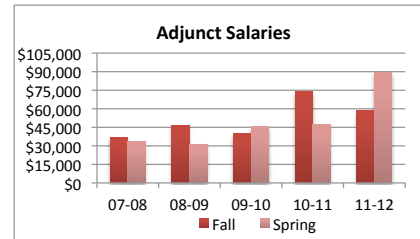
BUDGET ALLOCATIONS	FY 2007	FY 2008	FY 2009	FY 2010	FY 2011
Base budget figures as of 07/01, beginning of each fiscal year.					
SALARIES	\$976,707	\$991,354	\$1,120,697	\$1,092,981	\$1,137,736
OPERATING	\$23,654	\$23,654	\$32,148	\$26,095	\$45,300
TOTAL	\$1,000,361	\$1,015,008	\$1,152,845	\$1,119,076	\$1,183,036



ACTUAL YEAR END EXPENDITURES	FY 2007	FY 2008	FY 2009	FY 2010	FY 2011
	\$1,381,502	\$1,427,395	\$1,384,103	\$1,400,162	\$1,738,627
Includes benefits, longevity pay and adjunct salaries for fiscal year.					

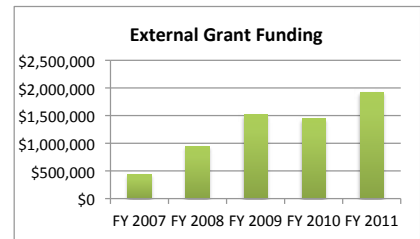


DEPT COST PER SCH	FY 2007	FY 2008	FY 2009	FY 2010	FY 2011
(Actual Expenditures + Fall Adj Salaries + Spring Adj Salaries)/(Fall SCH + Spring SCH)					
Department	\$276.61	\$269.76	\$262.47	\$266.37	\$288.95
College	\$202.80	\$197.94	\$196.82	\$184.36	\$188.80
University	\$164.98	\$162.74	\$157.45	\$141.76	\$145.63



ADJUNCT SALARIES	07-08	08-09	09-10	10-11	11-12
FALL	\$36,920	\$46,860	\$39,760	\$73,717	\$58,220
SPRING	\$33,420	\$31,240	\$45,440	\$47,600	\$89,532

EXTERNAL GRANT FUNDING	FY 2007	FY 2008	FY 2009	FY 2010	FY 2011
NUMBER AWARDED	6	9	10	14	6
AMOUNT AWARDED	\$443,704	\$948,151	\$1,519,406	\$1,447,929	\$1,924,532



Grant funding figures are for fiscal year completed just before current Fall semester.

SCHOLARLY WORKS (T/TT ONLY)	Cal Yr 2007	Cal Yr 2008	Cal Yr 2009	Cal Yr 2010	Cal Yr 2011
Paper Presentations	3	7	17	37	19
Journal Articles	18	18	13	6	10
Books Authored	0	0	0	2	0
Books Edited	0	0	1	5	1
Juried Shows, Performances	0	1	0	0	2
Works Cited (added 2009)			3	3	5
External Commissions (added 2009)			0	0	0
All Scholarly Works Total	21	26	34	53	37

SCHOLARSHIP PER FAC FTE (T/TT ONLY)

Department	1.83	2.48	3.24	5.58	3.52
College	4.03	3.64	4.95	5.21	5.02
University	3.53	3.17	5.35	4.87	8.36