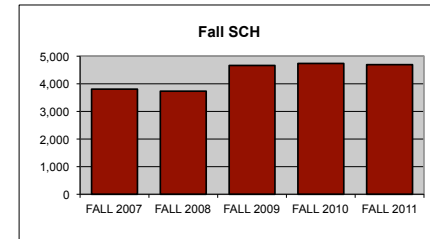
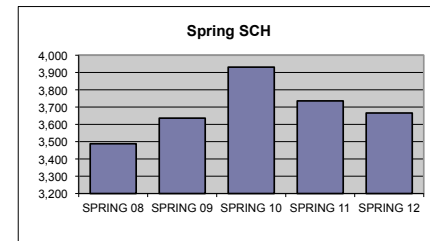


## UTC DEPARTMENT PROFILE: Music

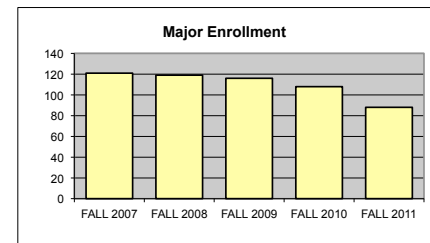
<u>STUDENT CREDIT HOUR PRODUCTION</u>	<u>FALL 2007</u>	<u>FALL 2008</u>	<u>FALL 2009</u>	<u>FALL 2010</u>	<u>FALL 2011</u>
LOWER	3,247	3,325	3,972	3,997	4,141
UPPER	455	292	575	625	503
GRADUATE	102	114	114	114	49
<b>TOTAL</b>	<b>3,804</b>	<b>3,731</b>	<b>4,661</b>	<b>4,736</b>	<b>4,693</b>



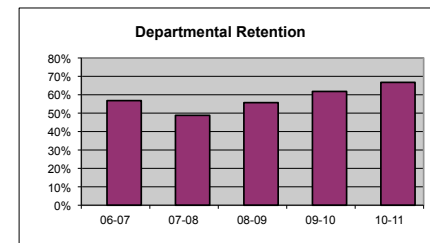
	<u>SPRING 08</u>	<u>SPRING 09</u>	<u>SPRING 10</u>	<u>SPRING 11</u>	<u>SPRING 12</u>
LOWER	2,963	3,026	3,159	3,093	3,112
UPPER	429	489	630	552	490
GRADUATE	96	121	142	91	64
<b>TOTAL</b>	<b>3,488</b>	<b>3,636</b>	<b>3,931</b>	<b>3,736</b>	<b>3,666</b>



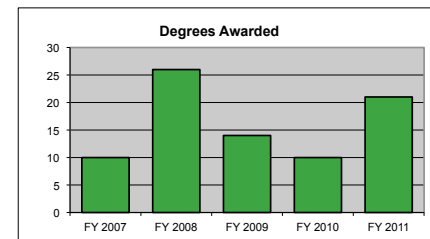
<u>MAJOR ENROLLMENT</u>	<u>FALL 2007</u>	<u>FALL 2008</u>	<u>FALL 2009</u>	<u>FALL 2010</u>	<u>FALL 2011</u>
PRE MUSIC		11	29	36	29
BA MUSIC	20	15	11	5	3
BM MUSIC	34	28	23	18	24
BM MUSIC EDUCATION	50	47	36	34	21
BS MUSIC EDUCATION	1	0	0	0	0
MM MUSIC: PERFORMANCE	8	10	11	9	3
MM MUSIC: EDUCATION	8	8	6	6	8
<b>TOTAL</b>	<b>121</b>	<b>119</b>	<b>116</b>	<b>108</b>	<b>88</b>



<u>DEPARTMENTAL RETENTION*</u>	<u>06-07</u>	<u>07-08</u>	<u>08-09</u>	<u>09-10</u>	<u>10-11</u>
*Enrolled undergraduate majors returning to major	56.8%	48.8%	55.7%	61.8%	66.7%



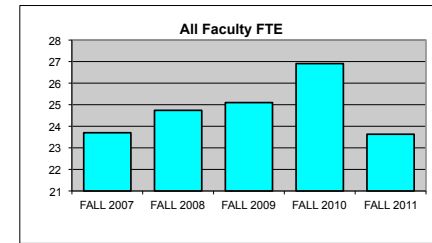
<u>DEGREES AWARDED</u>	<u>FY 2007</u>	<u>FY 2008</u>	<u>FY 2009</u>	<u>FY 2010</u>	<u>FY 2011</u>
BA MUSIC	0	4	2	3	1
BM MUSIC	1	4	1	3	3
BM MUSIC EDUCATION	4	12	4	2	7
BS MUSIC EDUCATION	0	1	1	0	0
MM MUSIC: PERFORMANCE	4	3	4	1	7
MM MUSIC: EDUCATION	1	2	2	1	3
<b>TOTAL</b>	<b>10</b>	<b>26</b>	<b>14</b>	<b>10</b>	<b>21</b>



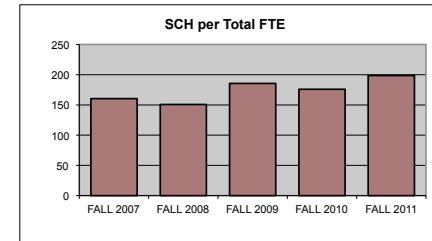
Degrees awarded between July 1st and June 30th of following year.

<u>FTE FACULTY</u>	<u>FALL 2007</u>	<u>FALL 2008</u>	<u>FALL 2009</u>	<u>FALL 2010</u>	<u>FALL 2011</u>
FULL-TIME Tenured/Tenure Track	12.25	13.50	12.50	12.50	12.50
FULL-TIME Non-Tenure Track	2.50	2.50	2.25	3.50	3.00
PART-TIME (Adjunct)	8.95	8.74	10.35	10.91	8.13
FT Teaching Overload*			0.00	0.00	0.00
<b>TOTAL</b>	<b>23.70</b>	<b>24.74</b>	<b>25.10</b>	<b>26.91</b>	<b>23.63</b>

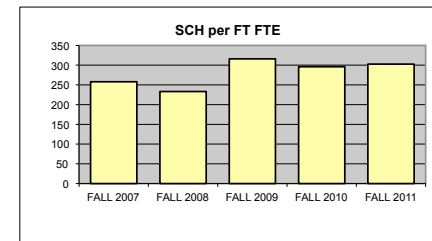
\*Teaching overload was separated from FT faculty FTE beginning in Fall 2009.



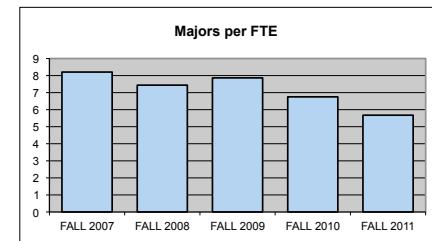
<u>SCH PER FTE FACULTY (ADJUNCT INCL)</u>	<u>FALL 2007</u>	<u>FALL 2008</u>	<u>FALL 2009</u>	<u>FALL 2010</u>	<u>FALL 2011</u>
	160.51	150.81	185.70	175.99	198.60



<u>SCH PER FULL-TIME FTE FACULTY</u> (includes both full-time figures and TOL above)	<u>FALL 2007</u>	<u>FALL 2008</u>	<u>FALL 2009</u>	<u>FALL 2010</u>	<u>FALL 2011</u>
	257.90	233.19	316.00	296.00	302.77



<u>MAJORS PER FULL-TIME FTE FACULTY</u> (includes both full-time figures and TOL above)	<u>FALL 2007</u>	<u>FALL 2008</u>	<u>FALL 2009</u>	<u>FALL 2010</u>	<u>FALL 2011</u>
	8.20	7.44	7.86	6.75	5.68



<b>BUDGET ALLOCATIONS</b>	<b>FY 2007</b>	<b>FY 2008</b>	<b>FY 2009</b>	<b>FY 2010</b>	<b>FY 2011</b>
Base budget figures as of 07/01, beginning of each fiscal year.					
<b>SALARIES</b>	\$927,403	\$915,965	\$1,028,904	\$995,568	\$1,036,676
<b>OPERATING</b>	\$38,049	\$38,049	\$42,244	\$37,015	\$39,629
<b>TOTAL</b>	<b>\$965,452</b>	<b>\$954,014</b>	<b>\$1,071,148</b>	<b>\$1,032,583</b>	<b>\$1,076,305</b>

<b>ACTUAL YEAR END EXPENDITURES</b>	<b>FY 2007</b>	<b>FY 2008</b>	<b>FY 2009</b>	<b>FY 2010</b>	<b>FY 2011</b>
	\$1,399,267	\$1,462,104	\$1,470,722	\$1,439,514	\$1,488,268

Includes benefits and longevity pay for fiscal year.

<b>ADJUNCT SALARIES</b>	<b>07-08</b>	<b>08-09</b>	<b>09-10</b>	<b>10-11</b>	<b>11-12</b>
<b>FALL</b>	\$58,414	\$71,692	\$89,531	\$95,086	\$92,283
<b>SPRING</b>	\$47,493	\$56,955	\$78,642	\$85,974	\$74,170

<b>EXTERNAL GRANT FUNDING</b>	<b>FY 2007</b>	<b>FY 2008</b>	<b>FY 2009</b>	<b>FY 2010</b>	<b>FY 2011</b>
<b>NUMBER AWARDED</b>	0	0	0	0	0
<b>AMOUNT AWARDED</b>	\$0	\$0	\$0	\$0	\$0

Grant funding figures are for fiscal year completed just before current Fall semester.

<b>DEPT COST PER SCH</b>	<b>FY 2007</b>	<b>FY 2008</b>	<b>FY 2009</b>	<b>FY 2010</b>	<b>FY 2011</b>
(Actual Expenditures + Fall Adj Salaries + Spring Adj Salaries)/(Fall SCH + Spring SCH)					
<b>Department</b>	\$225.09	\$215.03	\$217.10	\$187.11	\$197.04
<b>College</b>	\$138.93	\$140.89	\$136.05	\$118.75	\$124.24
<b>University</b>	\$164.98	\$162.74	\$157.45	\$141.76	\$145.63

<b>SCHOLARLY WORKS (T/TT ONLY)</b>	<b>Cal Yr 2007</b>	<b>Cal Yr 2008</b>	<b>Cal Yr 2009</b>	<b>Cal Yr 2010</b>	<b>Cal Yr 2011</b>
<b>Paper Presentations</b>	14	5	10	4	1
<b>Journal Articles</b>	7	2	19	4	7
<b>Books Authored</b>	2	1	0	12	5
<b>Books Edited</b>	6	7	1	2	0
<b>Juried Shows, Performances</b>	164	35	132	57	115
<b>Works Cited</b> (added 2009)			0	0	0
<b>External Commissions</b> (added 2009)			23	0	2
<b>All Scholarly Works Total</b>	<b>193</b>	<b>50</b>	<b>185</b>	<b>79</b>	<b>130</b>

<b>SCHOLARSHIP PER FAC FTE (T/TT ONLY)</b>					
<b>Department</b>	15.76	3.70	14.80	6.32	10.40
<b>College</b>	3.88	3.40	6.39	5.42	5.73
<b>University</b>	3.53	3.17	5.35	4.87	8.36

