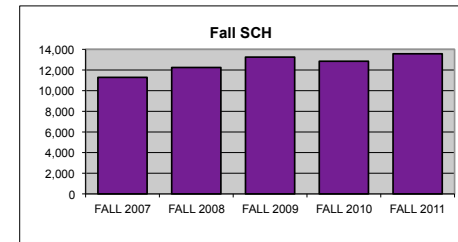
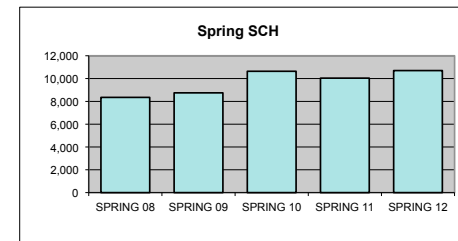


UTC DEPARTMENT PROFILE: Mathematics

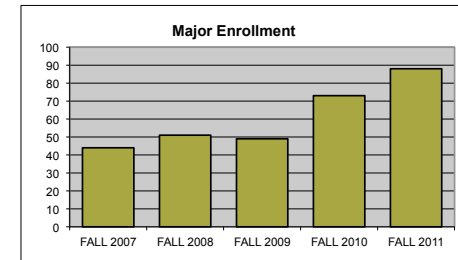
<u>STUDENT CREDIT HOUR PRODUCTION</u>	<u>FALL 2007</u>	<u>FALL 2008</u>	<u>FALL 2009</u>	<u>FALL 2010</u>	<u>FALL 2011</u>
LOWER	10,911	11,982	12,930	12,387	12,973
UPPER	345	240	249	333	354
GRADUATE	29	20	69	129	246
TOTAL	11,285	12,242	13,248	12,849	13,573



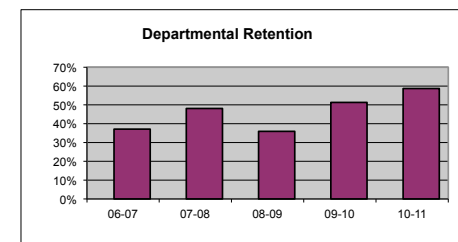
	<u>SPRING 08</u>	<u>SPRING 09</u>	<u>SPRING 10</u>	<u>SPRING 11</u>	<u>SPRING 12</u>
LOWER	7,999	8,493	10,340	9,621	10,354
UPPER	267	234	240	285	202
GRADUATE	81	24	57	132	150
TOTAL	8,347	8,751	10,637	10,038	10,706



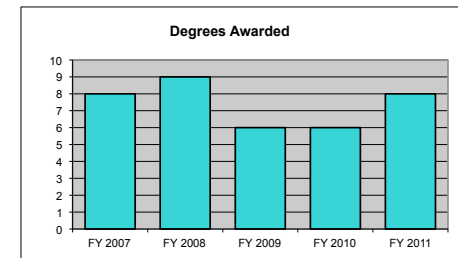
<u>MAJOR ENROLLMENT</u>	<u>FALL 2007</u>	<u>FALL 2008</u>	<u>FALL 2009</u>	<u>FALL 2010</u>	<u>FALL 2011</u>
BA MATHEMATICS	7	20	13	16	24
BS APPLIED MATHEMATICS	37	31	36	44	48
MS MATH				13	16
TOTAL	44	51	49	73	88



<u>DEPARTMENTAL RETENTION*</u>	<u>06-07</u>	<u>07-08</u>	<u>08-09</u>	<u>09-10</u>	<u>10-11</u>
*Enrolled undergraduate majors returning to major	37.1%	48.1%	35.9%	51.3%	58.7%



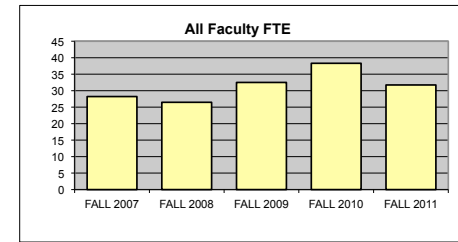
<u>DEGREES AWARDED</u>	<u>FY 2007</u>	<u>FY 2008</u>	<u>FY 2009</u>	<u>FY 2010</u>	<u>FY 2011</u>
BA MATHEMATICS	0	0	0	0	0
BS APPLIED MATHEMATICS	8	9	6	6	6
MS MATH	-	-	-	-	2
TOTAL	8	9	6	6	8



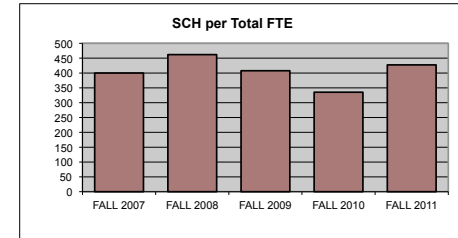
Degrees awarded between July 1st and June 30th of following year.

<u>FTE FACULTY</u>	<u>FALL 2007</u>	<u>FALL 2008</u>	<u>FALL 2009</u>	<u>FALL 2010</u>	<u>FALL 2011</u>
FULL-TIME Tenured/Tenure Track	15.76	13.67	15.50	16.50	16.50
FULL-TIME Non-Tenure Track	8.49	10.83	13.00	14.00	13.00
PART-TIME (Adjunct)	3.98	1.99	1.00	5.18	0.25
FT Teaching Overload*			3.00	2.63	2.00
TOTAL	28.23	26.49	32.50	38.31	31.75

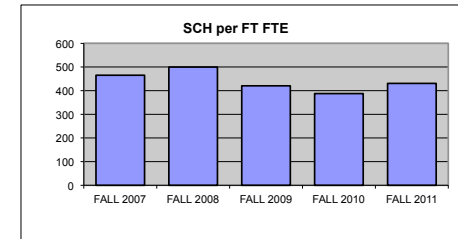
*Teaching overload was separated from FT faculty FTE beginning in Fall 2009.



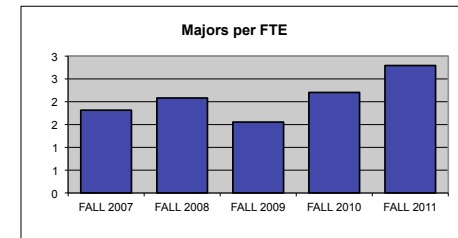
<u>SCH PER FTE FACULTY (ADJUNCT INCL)</u>	<u>FALL 2007</u>	<u>FALL 2008</u>	<u>FALL 2009</u>	<u>FALL 2010</u>	<u>FALL 2011</u>
	399.75	462.14	407.63	335.40	427.50



<u>SCH PER FULL-TIME FTE FACULTY</u> (includes both full-time figures and TOL above)	<u>FALL 2007</u>	<u>FALL 2008</u>	<u>FALL 2009</u>	<u>FALL 2010</u>	<u>FALL 2011</u>
	465.36	499.67	420.57	387.84	430.89



<u>MAJORS PER FULL-TIME FTE FACULTY</u> (includes both full-time figures and TOL above)	<u>FALL 2007</u>	<u>FALL 2008</u>	<u>FALL 2009</u>	<u>FALL 2010</u>	<u>FALL 2011</u>
	1.81	2.08	1.56	2.20	2.79



BUDGET ALLOCATIONS	FY 2007	FY 2008	FY 2009	FY 2010	FY 2011
Base budget figures as of 07/01, beginning of each fiscal year.					
SALARIES	\$1,287,967	\$1,369,369	\$1,369,369	\$1,427,873	\$1,507,540
OPERATING	\$18,099	\$18,099	\$18,099	\$20,318	\$73,387
TOTAL	\$1,306,066	\$1,387,468	\$1,387,468	\$1,448,191	\$1,580,927

ACTUAL YEAR END EXPENDITURES	FY 2007	FY 2008	FY 2009	FY 2010	FY 2011
	\$1,979,955	\$2,138,367	\$2,039,270	\$1,922,680	\$1,923,138

Includes benefits and longevity pay for fiscal year.

ADJUNCT SALARIES	07-08	08-09	09-10	10-11	11-12
FALL	\$34,500	\$48,525	\$10,500	\$10,500	\$6,125
SPRING	\$13,125	\$5,250	\$7,875	\$6,125	\$9,500

EXTERNAL GRANT FUNDING	FY 2007	FY 2008	FY 2009	FY 2010	FY 2011
NUMBER AWARDED	1	3	3	2	1
AMOUNT AWARDED	\$73,000	\$196,493	\$165,988	\$149,785	\$74,988

Grant funding figures are for fiscal year completed just before current Fall semester.

COST PER SCH (Fall & Spring)	FY 2007	FY 2008	FY 2009	FY 2010	FY 2011
(Actual Expenditures + Fall Adj Salaries + Spring Adj Salaries)/(Fall SCH + Spring SCH)					
Department	\$112.16	\$111.35	\$99.70	\$81.27	\$84.75
College	\$138.93	\$140.89	\$136.05	\$118.75	\$124.24
University	\$164.98	\$162.74	\$157.45	\$141.76	\$145.63

SCHOLARLY WORKS (T/TT ONLY)	Cal Yr 2007	Cal Yr 2008	Cal Yr 2009	Cal Yr 2010	Cal Yr 2011
Paper Presentations	21	9	6	10	20
Journal Articles	40	28	40	43	51
Books Authored	0	0	1	0	0
Books Edited	3	0	1	1	0
Juried Shows, Performances	0	0	0	0	0
Works Cited (added 2009)			0	0	0
External Commissions (added 2009)			0	0	0
All Scholarly Works Total	64	37	48	54	71

SCHOLARSHIP PER FAC FTE (T/TT ONLY)					
Department	4.06	2.71	3.10	3.27	4.30
College	3.88	3.40	6.39	5.42	5.73
University	3.53	3.17	5.35	4.87	8.36

