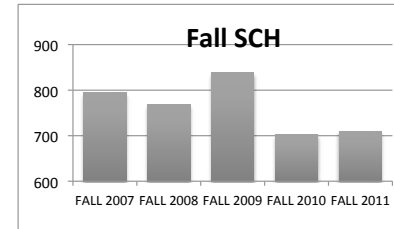


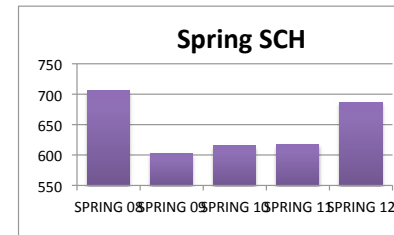
UTC DEPARTMENTAL PROFILE: Interior Design (formerly HECO)*

* - Human Ecology ceased to be a department in Fall 2007; **All HECO data have been redistributed to their current departments.** Social Work became a stand alone program in Fall 2007, the early childhood education courses that were located in this department have moved to the SOE, and the food/nutrition majors and instructors moved to HHP.

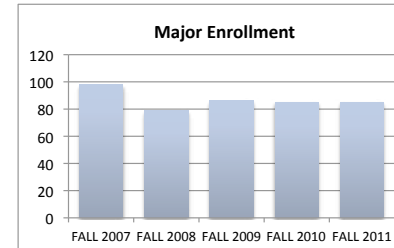
<u>STUDENT CREDIT HOUR PRODUCTION</u>	<u>FALL 2007</u>	<u>FALL 2008</u>	<u>FALL 2009</u>	<u>FALL 2010</u>	<u>FALL 2011</u>
LOWER - Interior Design	357	477	510	375	432
UPPER - Interior Design	438	292	328	328	278
GRADUATE - Interior Design	0	0	0	0	0
TOTAL - Interior Design	795	769	838	703	710



	<u>SPRING 08</u>	<u>SPRING 09</u>	<u>SPRING 10</u>	<u>SPRING 11</u>	<u>SPRING 12</u>
LOWER - Interior Design	384	363	336	300	426
UPPER - Interior Design	322	240	279	318	261
GRADUATE - Interior Design	0	0	0	0	0
TOTAL - Interior Design	706	603	615	618	687

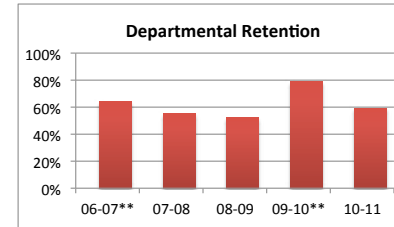


<u>MAJOR ENROLLMENT</u>	<u>FALL 2007</u>	<u>FALL 2008</u>	<u>FALL 2009</u>	<u>FALL 2010</u>	<u>FALL 2011</u>
BS HECO: INTERIOR DESIGN	98	50	19	10	7
BS INTERIOR DESIGN		29	67	74	65
PRE INTERIOR DESIGN				1	13
TOTAL	98	79	86	85	85



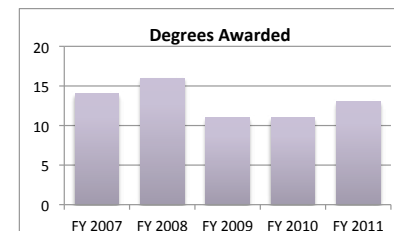
<u>DEPARTMENTAL RETENTION*</u>	<u>06-07**</u>	<u>07-08</u>	<u>08-09</u>	<u>09-10**</u>	<u>10-11</u>
*Enrolled undergraduate majors returning to major	63.9%	55.2%	52.3%	79.1%	59.2%

**These figures include HECO data. Due to Banner transition, the HECO majors for 09-10 were not able to be moved to their rightful department.



<u>DEGREES AWARDED</u>	<u>FY 2007</u>	<u>FY 2008</u>	<u>FY 2009</u>	<u>FY 2010</u>	<u>FY 2011</u>
BS HECO: INTERIOR DESIGN	14	16	11	6	4
BS INTERIOR DESIGN			0	5	9
TOTAL	14	16	11	11	13

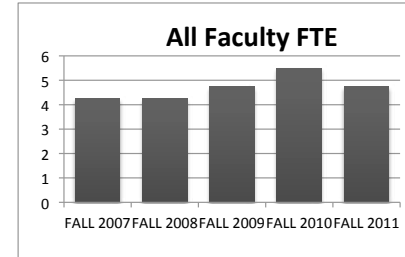
Degrees awarded between July 1st and June 30th of following year.
All HECO degrees have been moved to their rightful departments.



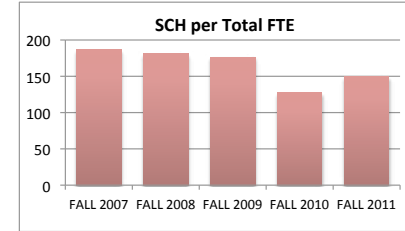
<u>FTE FACULTY</u>	<u>FALL 2007</u>	<u>FALL 2008</u>	<u>FALL 2009</u>	<u>FALL 2010</u>	<u>FALL 2011</u>
FULL-TIME Tenured/Tenure Track	2.75	2.50	2.50	2.50	3.50
FULL-TIME Non-Tenure Track	0.00	0.00	0.00	1.00	0.00
PART-TIME (Adjunct)	1.50	1.75	2.00	2.00	1.25
FT Teaching Overload*			0.25	0.00	0.00
TOTAL	4.25	4.25	4.75	5.50	4.75

*Teaching overload was separated from FT faculty FTE beginning in Fall 2009.

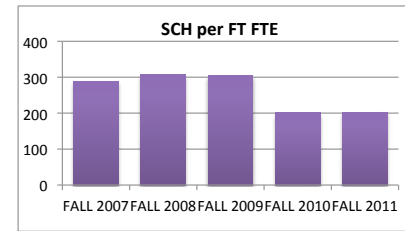
Fall 2006 FTE includes some faculty who were moved to TPA in Fall 2007. Social Work faculty FTE were moved to Social Work department profile



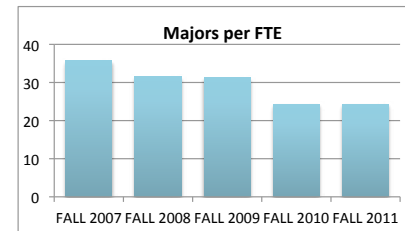
<u>SCH PER FTE FACULTY (ADJUNCT INCL.)</u>	<u>FALL 2007</u>	<u>FALL 2008</u>	<u>FALL 2009</u>	<u>FALL 2010</u>	<u>FALL 2011</u>
	187.06	180.94	176.42	127.82	149.47



<u>SCH PER FULL-TIME FTE FACULTY</u> (includes both full-time figures and TOL above)	<u>FALL 2007</u>	<u>FALL 2008</u>	<u>FALL 2009</u>	<u>FALL 2010</u>	<u>FALL 2011</u>
	289.09	307.60	304.73	200.86	202.86



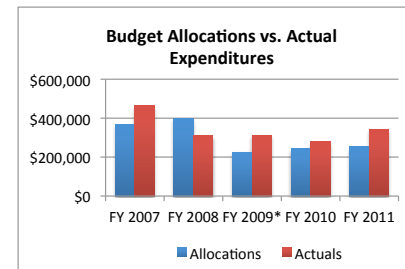
<u>MAJORS PER FULL-TIME FTE FACULTY</u> (includes both full-time figures and TOL above)	<u>FALL 2007</u>	<u>FALL 2008</u>	<u>FALL 2009</u>	<u>FALL 2010</u>	<u>FALL 2011</u>
	35.64	31.60	31.27	24.29	24.29



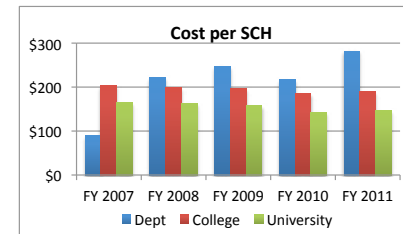
<u>BUDGET ALLOCATIONS</u>	<u>FY 2007</u>	<u>FY 2008</u>	<u>FY 2009*</u>	<u>FY 2010</u>	<u>FY 2011</u>
Base budget figures as of 07/01, beginning of each fiscal year.					
SALARIES	\$351,649	\$382,004	\$215,156	\$233,092	\$245,836
OPERATING	\$16,077	\$16,077	\$9,994	\$8,944	\$9,469
TOTAL	\$367,726	\$398,081	\$225,150	\$242,036	\$255,305

<u>ACTUAL YEAR END EXPENDITURES</u>	<u>FY 2007</u>	<u>FY 2008</u>	<u>FY 2009</u>	<u>FY 2010</u>	<u>FY 2011</u>
	\$465,237	\$310,210	\$312,188	\$278,304	\$344,329

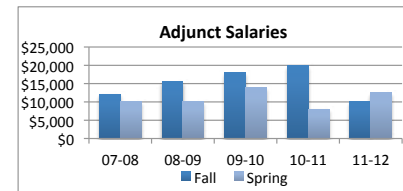
Includes benefits, longevity pay and adjunct salaries for fiscal year.



COST PER SCH (Fall & Spring) (Actual Expenditures + Fall Adj Salaries + Spring Adj Salaries)/(Fall SCH + Spring SCH)	FY 2007	FY 2008	FY 2009	FY 2010	FY 2011
Department	\$89.28	\$221.42	\$246.12	\$216.31	\$281.85
College	\$202.80	\$197.94	\$196.82	\$184.36	\$188.80
University	\$164.98	\$162.74	\$157.45	\$141.76	\$145.63

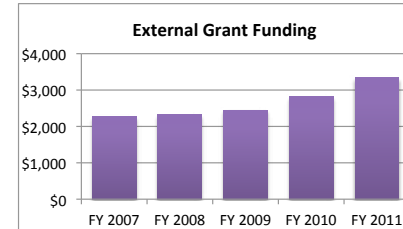


ADJUNCT SALARIES	07-08	08-09	09-10	10-11	11-12
FALL	\$12,142	\$15,492	\$18,000	\$20,000	\$10,000
SPRING	\$10,000	\$10,000	\$14,000	\$8,000	\$12,497



EXTERNAL GRANT FUNDING	FY 2007	FY 2008	FY 2009	FY 2010	FY 2011
NUMBER AWARDED	1	1	1	1	1
AMOUNT AWARDED	\$2,278	\$2,323	\$2,447	\$2,817	\$3,334

Grant funding figures are for fiscal year completed just before current Fall semester.



SCHOLARLY WORKS (T/TT ONLY)	Cal Yr 2007	Cal Yr 2008	Cal Yr 2009	Cal Yr 2010	Cal Yr 2011
Paper Presentations	1	0	1	9	6
Journal Articles	1	0	1	0	0
Books Authored	0	0	0	0	0
Books Edited	1	0	0	5	3
Juried Shows, Performances	1	0	0	0	0
Works Cited (added 2009)			0	0	0
External Commissions (added 2009)			1	6	4
All Scholarly Works Total	4	0	3	20	13

SCHOLARSHIP PER FAC FTE (T/TT ONLY)	Cal Yr 2007	Cal Yr 2008	Cal Yr 2009	Cal Yr 2010	Cal Yr 2011
Department	1.45	0.00	1.20	8.00	3.71
College	4.03	3.64	4.95	5.21	5.02
University	3.53	3.17	5.35	4.87	8.36