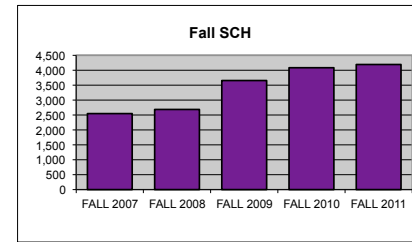
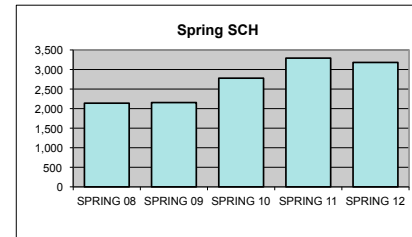


UTC DEPARTMENT PROFILE: Foreign Languages & Literatures

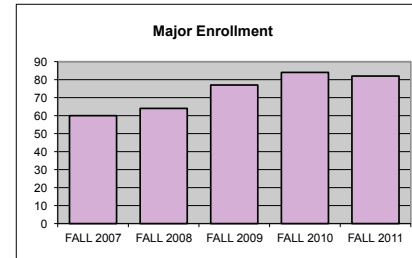
<u>STUDENT CREDIT HOUR PRODUCTION</u>	<u>FALL 2007</u>	<u>FALL 2008</u>	<u>FALL 2009</u>	<u>FALL 2010</u>	<u>FALL 2011</u>
LOWER	2,105	2,369	3,162	3,536	3,644
UPPER	441	317	492	547	549
GRADUATE	0	0	0	0	0
TOTAL	2,546	2,686	3,654	4,083	4,193



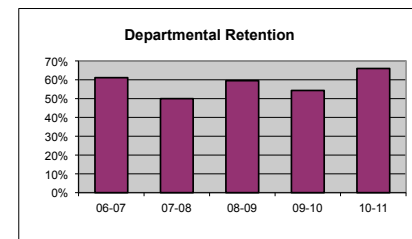
	<u>SPRING 08</u>	<u>SPRING 09</u>	<u>SPRING 10</u>	<u>SPRING 11</u>	<u>SPRING 12</u>
LOWER	1,764	1,732	2,251	2,642	2,529
UPPER	376	423	529	651	651
GRADUATE	0	0	0	0	0
TOTAL	2,140	2,155	2,780	3,293	3,180



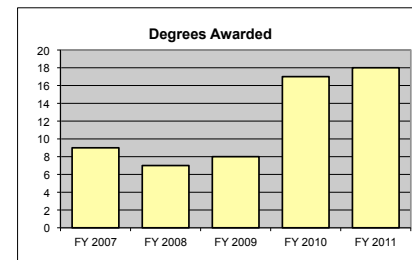
<u>MAJOR ENROLLMENT</u>	<u>FALL 2007</u>	<u>FALL 2008</u>	<u>FALL 2009</u>	<u>FALL 2010</u>	<u>FALL 2011</u>
BA FOREIGN LANG: FRENCH	10	6	13	10	19
BA FOREIGN LANG: GREEK & LATIN	0	3	3	1	1
BA FOREIGN LANG: LATIN	2	1	2	6	7
BA FOREIGN LANG: SPANISH	38	46	49	54	51
BS FOREIGN LANG EDUCATION	10	8	10	13	4
TOTAL	60	64	77	84	82



<u>DEPARTMENTAL RETENTION*</u>	<u>06-07</u>	<u>07-08</u>	<u>08-09</u>	<u>09-10</u>	<u>10-11</u>
*Enrolled undergraduate majors returning to major	61.1%	50.0%	59.5%	54.3%	66.0%



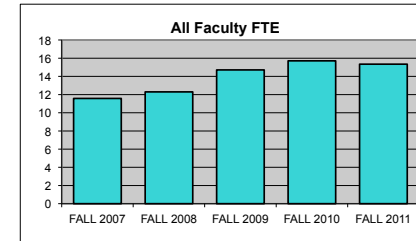
<u>DEGREES AWARDED</u>	<u>FY 2007</u>	<u>FY 2008</u>	<u>FY 2009</u>	<u>FY 2010</u>	<u>FY 2011</u>
BA FOREIGN LANG: FRENCH	2	2	0	5	1
BA FOREIGN LANG: GREEK & LATIN	0	1	0	1	0
BA FOREIGN LANG: LATIN	1	0	1	0	2
BA FOREIGN LANG: SPANISH	6	4	6	11	11
BS FOREIGN LANG EDUCATION	0	0	1	0	4
TOTAL	9	7	8	17	18



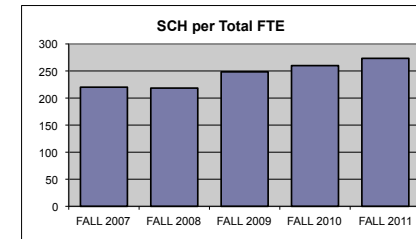
Degrees awarded between July 1st and June 30th of following year.

<u>FTE FACULTY</u>	<u>FALL 2007</u>	<u>FALL 2008</u>	<u>FALL 2009</u>	<u>FALL 2010</u>	<u>FALL 2011</u>
FULL-TIME Tenured/Tenure Track	7.25	6.91	6.50	5.50	6.50
FULL-TIME Non-Tenure Track	2.33	2.58	2.00	3.00	3.00
PART-TIME (Adjunct)	1.99	2.81	5.54	5.87	4.75
FT Teaching Overload*			0.67	1.34	1.09
TOTAL	11.57	12.30	14.71	15.71	15.34

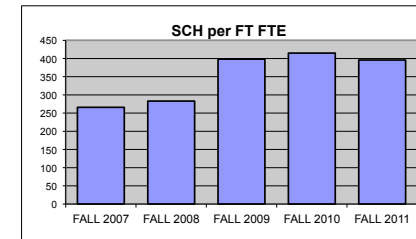
*Teaching overload was separated from FT faculty FTE beginning in Fall 2009.



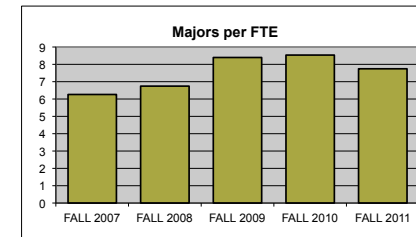
<u>SCH PER FTE FACULTY (ADJUNCT INCL)</u>	<u>FALL 2007</u>	<u>FALL 2008</u>	<u>FALL 2009</u>	<u>FALL 2010</u>	<u>FALL 2011</u>
	220.05	218.37	248.40	259.90	273.34



<u>SCH PER FULL-TIME FTE FACULTY</u> (includes both full-time figures and TOL above)	<u>FALL 2007</u>	<u>FALL 2008</u>	<u>FALL 2009</u>	<u>FALL 2010</u>	<u>FALL 2011</u>
	265.76	283.03	398.47	414.94	395.94



<u>MAJORS PER FULL-TIME FTE FACULTY</u> (includes both full-time figures and TOL above)	<u>FALL 2007</u>	<u>FALL 2008</u>	<u>FALL 2009</u>	<u>FALL 2010</u>	<u>FALL 2011</u>
	6.26	6.74	8.40	8.54	7.74



BUDGET ALLOCATIONS	FY 2007	FY 2008	FY 2009	FY 2010	FY 2011
Base budget figures as of 07/01, beginning of each fiscal year.					
SALARIES	\$551,044	\$563,912	\$554,560	\$408,158	\$409,739
OPERATING	\$9,424	\$9,424	\$11,751	\$9,651	\$10,701
TOTAL	\$560,468	\$573,336	\$566,311	\$417,809	\$420,440

ACTUAL YEAR END EXPENDITURES	FY 2007	FY 2008	FY 2009	FY 2010	FY 2011
	\$808,185	\$782,520	\$627,779	\$561,635	\$570,218

Includes benefits and longevity pay for fiscal year.

ADJUNCT SALARIES	07-08	08-09	09-10	10-11	11-12
FALL	\$12,663	\$33,068	\$49,670	\$57,339	\$44,805
SPRING	\$15,336	\$24,917	\$45,586	\$46,171	\$49,339

EXTERNAL GRANT FUNDING	FY 2007	FY 2008	FY 2009	FY 2010	FY 2011
NUMBER AWARDED	0	0	1	0	0
AMOUNT AWARDED	\$0	\$0	\$4,920	\$0	\$0

Grant funding figures are for fiscal year completed just before current Fall semester.

DEPT COST PER SCH	FY 2007	FY 2008	FY 2009	FY 2010	FY 2011
(Actual Expenditures + Fall Adj Salaries + Spring Adj Salaries)/(Fall SCH + Spring SCH)					
Department	\$202.62	\$172.97	\$141.66	\$102.10	\$91.34
College	\$138.93	\$140.89	\$136.05	\$118.75	\$124.24
University	\$164.98	\$162.74	\$157.45	\$141.76	\$145.63

SCHOLARLY WORKS (T/TT ONLY)	Cal Yr 2007	Cal Yr 2008	Cal Yr 2009	Cal Yr 2010	Cal Yr 2011
Paper Presentations	2	11	8	5	11
Journal Articles	3	8	7	3	4
Books Authored	1	2	0	0	0
Books Edited	0	2	1	1	1
Juried Shows, Performances	0	0	0	0	0
Works Cited (added 2009)			1	12	5
External Commissions (added 2009)			0	0	0
All Scholarly Works Total	6	23	17	21	21

SCHOLARSHIP PER FAC FTE (T/TT ONLY)					
Department	0.83	3.33	2.62	3.82	3.23
College	3.88	3.40	6.39	5.42	5.73
University	3.53	3.17	5.35	4.87	8.36

