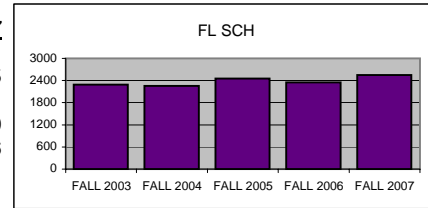


## UTC DEPARTMENT PROFILE: Foreign Languages & Literatures

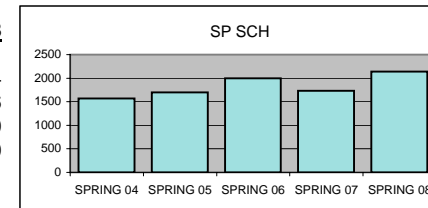
### STUDENT CREDIT HOUR PRODUCTION

	<u>FALL 2003</u>	<u>FALL 2004</u>	<u>FALL 2005</u>	<u>FALL 2006</u>	<u>FALL 2007</u>
LOWER	2021	1986	2181	1986	2105
UPPER	266	265	274	368	441
GRADUATE	0	3	3	0	0
<b>TOTAL</b>	<b>2287</b>	<b>2254</b>	<b>2458</b>	<b>2354</b>	<b>2546</b>



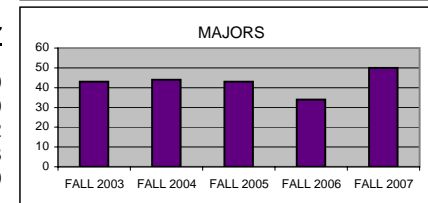
### SPRING 04 SPRING 05 SPRING 06 SPRING 07 SPRING 08

LOWER	1360	1459	1527	1397	1764
UPPER	209	238	473	332	376
GRADUATE	0	0	0	0	0
<b>TOTAL</b>	<b>1569</b>	<b>1697</b>	<b>2000</b>	<b>1729</b>	<b>2140</b>



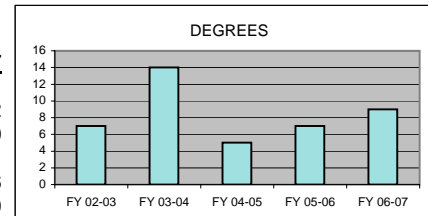
### MAJOR ENROLLMENT

	<u>FALL 2003</u>	<u>FALL 2004</u>	<u>FALL 2005</u>	<u>FALL 2006</u>	<u>FALL 2007</u>
BA FOREIGN LANG: FRENCH	8	10	9	7	10
BA FOREIGN LANG: GREEK & LATIN	4	2	2	1	0
BA FOREIGN LANG: LATIN	2	2	1	1	2
BA FOREIGN LANG: SPANISH	33	30	31	25	38
<b>TOTAL</b>	<b>43</b>	<b>44</b>	<b>43</b>	<b>34</b>	<b>50</b>



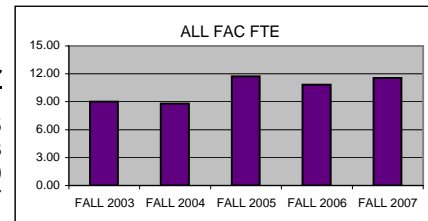
### DEGREES AWARDED

	<u>FY 02-03</u>	<u>FY 03-04</u>	<u>FY 04-05</u>	<u>FY 05-06</u>	<u>FY 06-07</u>
BA FRENCH	1	2	2	2	2
BA GREEK & LATIN	0	1	1	0	0
BA LATIN	0	3	0	0	1
BA SPANISH	6	8	2	5	6
<b>TOTAL</b>	<b>7</b>	<b>14</b>	<b>5</b>	<b>7</b>	<b>9</b>



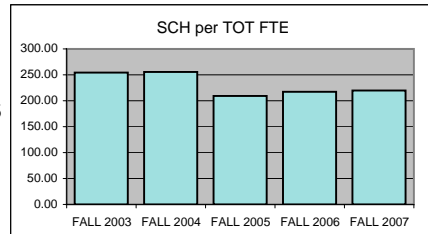
### FTE FACULTY

	<u>FALL 2003</u>	<u>FALL 2004</u>	<u>FALL 2005</u>	<u>FALL 2006</u>	<u>FALL 2007</u>
FULL-TIME Tenured/Tenure Track	5.00	6.00	7.00	7.00	7.25
FULL-TIME Non-Tenure Track	1.00	1.00	2.00	2.00	2.33
PART-TIME (Adjunct)	3.00	1.82	2.74	1.82	1.99
<b>TOTAL</b>	<b>9.00</b>	<b>8.82</b>	<b>11.74</b>	<b>10.82</b>	<b>11.57</b>



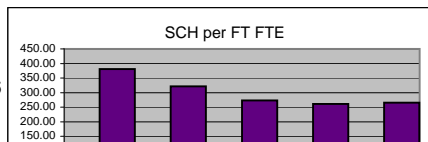
### SCH PER FTE FACULTY (ADJUNCT INCL)

<u>FALL 2003</u>	<u>FALL 2004</u>	<u>FALL 2005</u>	<u>FALL 2006</u>	<u>FALL 2007</u>
254.11	255.56	209.37	217.56	220.05



### SCH PER FULL-TIME FTE FACULTY (includes both full-time figures above)

<u>FALL 2003</u>	<u>FALL 2004</u>	<u>FALL 2005</u>	<u>FALL 2006</u>	<u>FALL 2007</u>
381.17	322.00	273.11	261.56	265.76

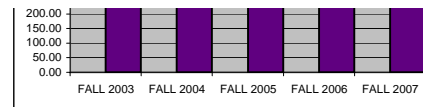


**MAJORS PER FULL-TIME FTE FACULTY**

(includes both full-time figures above)

**FALL 2003 FALL 2004 FALL 2005 FALL 2006 FALL 2007**

7.17 6.29 4.78 3.78 5.22



**BUDGET ALLOCATIONS**

Base budget figures as of 07/01, beginning of each fiscal year.

**SALARIES  
OPERATING  
TOTAL**

**7/1/03 7/1/04 7/1/05 7/1/06 7/1/2007**  
 \$498,371 \$499,942 \$524,498 \$551,044 \$563,912  
 \$6,159 \$6,159 \$6,159 \$9,424 \$9,424  
 \$504,530 \$506,101 \$530,657 \$560,468 \$573,336

**ACTUAL YEAR END EXPENDITURES**

Includes benefits, longevity pay and adjunct salaries for fiscal year.

\$749,563 \$747,110 \$758,868 \$808,185

**ADJUNCT SALARIES**

**FALL  
SPRING**

**03-04 04-05 05-06 06-07 07-08**  
 \$11,188 \$8,472 \$11,034 \$10,256 \$12,663  
 \$13,217 \$10,188 \$9,891 \$8,838 \$15,336

**EXTERNAL GRANT FUNDING**

Grant funding figures are for fiscal year completed just before current Fall semester.

**02-03 03-04 04-05 05-06 06-07**  
 \$0 \$0 \$0 \$0 \$0

**DEPT COST PER SCH**

Actual Expenditures/(Fall SCH + Spring SCH)

**Department College University**  
 \$194.39 \$189.09 \$170.23 \$197.94  
 \$129.47 \$127.37 \$130.60 \$133.94  
 \$142.66 \$145.95 \$152.71 \$159.26

**SCHOLARLY WORKS (T/TT ONLY)**

Paper Presentations  
Journal Articles  
Books Authored  
Books Edited  
Juried Shows, Performances  
All Scholarly Works Total

**Cal Yr 2007**

2  
3  
1  
0  
0  
6

**SCHOLARSHIP PER FAC FTE (T/TT ONLY)**

Department  
College  
University

0.83  
3.90  
3.58

