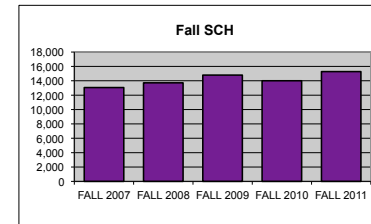


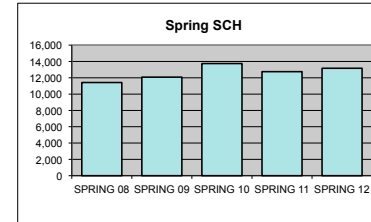
UTC DEPARTMENT PROFILE: English

STUDENT CREDIT HOUR PRODUCTION*

	<u>FALL 2007</u>	<u>FALL 2008</u>	<u>FALL 2009</u>	<u>FALL 2010</u>	<u>FALL 2011</u>
LOWER	11,127	11,655	12,792	11,914	12,962
UPPER	1,626	1,712	1,735	1,767	1,976
GRADUATE	300	345	262	323	334
TOTAL	13,053	13,712	14,789	14,004	15,272



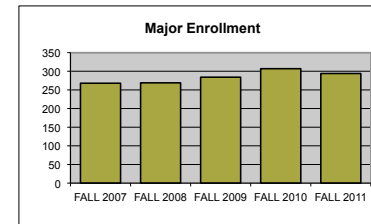
	<u>SPRING 08</u>	<u>SPRING 09</u>	<u>SPRING 10</u>	<u>SPRING 11</u>	<u>SPRING 12</u>
LOWER	9,456	9,975	11,418	10,535	10,988
UPPER	1,639	1,800	2,040	1,897	1,876
GRADUATE	321	306	289	322	297
TOTAL	11,416	12,081	13,747	12,754	13,161



* Includes WSTU credit hours.

MAJOR ENROLLMENT

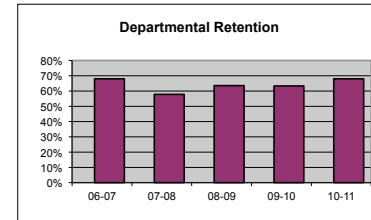
	<u>FALL 2007</u>	<u>FALL 2008</u>	<u>FALL 2009</u>	<u>FALL 2010</u>	<u>FALL 2011</u>
BA ENGLISH	216	216	245	262	249
PB ENGLISH: WRITING & RHETORIC			2	0	0
MA ENGLISH	52	53	37	45	45
TOTAL	268	269	284	307	294



DEPARTMENTAL RETENTION*

*Enrolled undergraduate majors returning to major

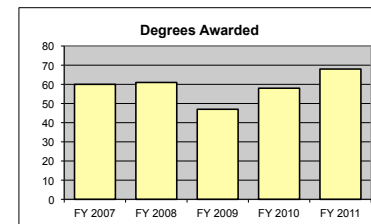
	<u>06-07</u>	<u>07-08</u>	<u>08-09</u>	<u>09-10</u>	<u>10-11</u>
	68.0%	57.8%	63.6%	63.3%	68.0%



DEGREES AWARDED

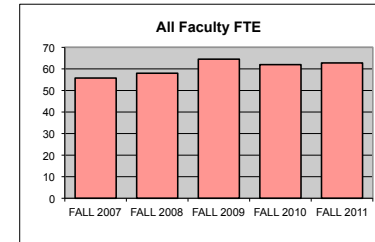
	<u>FY 2007</u>	<u>FY 2008</u>	<u>FY 2009</u>	<u>FY 2010</u>	<u>FY 2011</u>
BA ENGLISH	37	45	32	38	56
MA ENGLISH	23	16	15	20	12
TOTAL	60	61	47	58	68

Degrees awarded between July 1st and June 30th of following year.

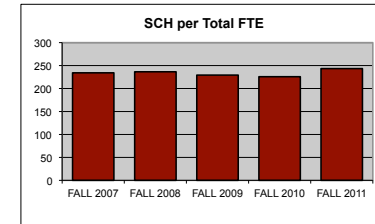


FTE FACULTY	FALL 2007	FALL 2008	FALL 2009	FALL 2010	FALL 2011
FULL-TIME Tenured/Tenure Track	17.25	18.25	20.00	19.00	21.00
FULL-TIME Non-Tenure Track	29.50	30.25	28.00	27.00	27.00
PART-TIME (Adjunct)	9.00	9.50	13.75	14.25	12.50
FT Teaching Overload*			2.75	1.75	2.25
TOTAL	55.75	58.00	64.50	62.00	62.75

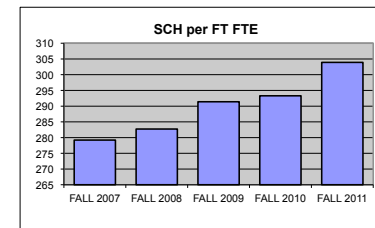
*Teaching overload was separated from FT faculty FTE beginning in Fall 2009.



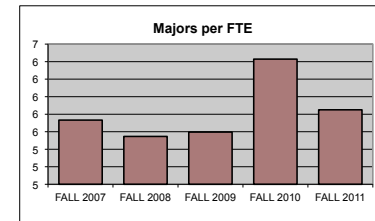
SCH PER FTE FACULTY (ADJUNCT INCL)	FALL 2007	FALL 2008	FALL 2009	FALL 2010	FALL 2011
	234.13	236.41	229.29	225.87	243.38



SCH PER FULL-TIME FTE FACULTY (includes both full-time figures and TOL above)	FALL 2007	FALL 2008	FALL 2009	FALL 2010	FALL 2011
	279.21	282.72	291.41	293.28	303.92



MAJORS PER FULL-TIME FTE FACULTY (includes both full-time figures and TOL above)	FALL 2007	FALL 2008	FALL 2009	FALL 2010	FALL 2011
	5.73	5.55	5.60	6.43	5.85



BUDGET ALLOCATIONS

Base budget figures as of 07/01, beginning of each fiscal year.

	<u>FY 2007</u>	<u>FY 2008</u>	<u>FY 2009</u>	<u>FY 2010</u>	<u>FY 2011</u>
SALARIES	\$1,637,780	\$1,706,951	\$2,052,854	\$2,052,932	\$2,034,837
OPERATING	\$22,491	\$22,491	\$38,392	\$28,480	\$33,436
TOTAL	\$1,660,271	\$1,729,442	\$2,091,246	\$2,081,412	\$2,068,273

ACTUAL YEAR END EXPENDITURES

	<u>FY 2007</u>	<u>FY 2008</u>	<u>FY 2009</u>	<u>FY 2010</u>	<u>FY 2011</u>
	\$2,607,470	\$2,816,760	\$3,001,900	\$2,857,578	\$2,884,064

Includes benefits and longevity pay for fiscal year.

ADJUNCT SALARIES

	<u>07-08</u>	<u>08-09</u>	<u>09-10</u>	<u>10-11</u>	<u>11-12</u>
FALL	\$66,916	\$68,000	\$102,000	\$134,578	\$104,000
SPRING	\$62,000	\$50,000	\$78,000	\$85,500	\$102,000

EXTERNAL GRANT FUNDING

	<u>FY 2007</u>	<u>FY 2008</u>	<u>FY 2009</u>	<u>FY 2010</u>	<u>FY 2011</u>
NUMBER AWARDED	2	4	3	2	3
AMOUNT AWARDED	\$3,200	\$68,600	\$74,953	\$2,800	\$79,192

Grant funding figures are for fiscal year completed just before current Fall semester.

COST PER SCH (Fall & Spring)

(Actual Expenditures + Fall Adj Salaries + Spring Adj Salaries)/(Fall SCH + Spring SCH)

	<u>FY 2007</u>	<u>FY 2008</u>	<u>FY 2009</u>	<u>FY 2010</u>	<u>FY 2011</u>
Department	\$124.85	\$120.38	\$120.96	\$106.45	\$116.01
College	\$138.93	\$140.89	\$136.05	\$118.75	\$124.24
University	\$164.98	\$162.74	\$157.45	\$141.76	\$145.63

SCHOLARLY WORKS (T/TT ONLY)

	<u>Cal Yr 2007</u>	<u>Cal Yr 2008</u>	<u>Cal Yr 2009</u>	<u>Cal Yr 2010</u>	<u>Cal Yr 2011</u>
Paper Presentations	19	21	22	26	17
Journal Articles	39	16	15	37	32
Books Authored	2	0	4	3	1
Books Edited	3	1	3	5	1
Juried Shows, Performances	23	14	28	8	22
Works Cited (added 2009)			23	3	2
External Commissions (added 2009)			0	0	0
All Scholarly Works Total	86	52	95	82	75

SCHOLARSHIP PER FAC FTE (T/TT ONLY)

	<u>2007</u>	<u>2008</u>	<u>2009</u>	<u>2010</u>	<u>2011</u>
Department	4.99	2.85	4.75	4.32	3.57
College	3.88	3.40	6.39	5.42	5.73
University	3.53	3.17	5.35	4.87	8.36

