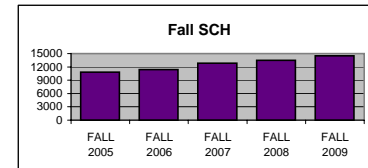
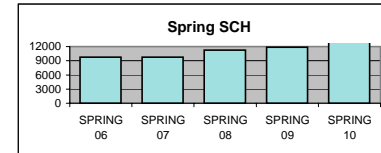


UTC DEPARTMENT PROFILE: English

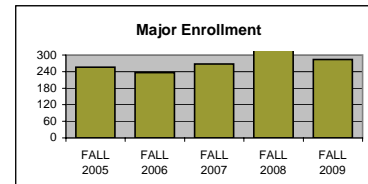
<u>STUDENT CREDIT HOUR PRODUCTION</u>	<u>FALL 2005</u>	<u>FALL 2006</u>	<u>FALL 2007</u>	<u>FALL 2008</u>	<u>FALL 2009</u>
LOWER	9153	9678	11019	11565	12687
UPPER	1384	1412	1524	1559	1558
GRADUATE	282	288	300	345	262
TOTAL	10819	11378	12843	13469	14507



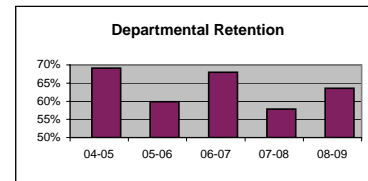
	<u>SPRING 06</u>	<u>SPRING 07</u>	<u>SPRING 08</u>	<u>SPRING 09</u>	<u>SPRING 10</u>
LOWER	7827	8127	9345	9855	11418
UPPER	1551	1402	1555	1686	2040
GRADUATE	351	216	321	306	289
TOTAL	9729	9745	11221	11847	13747



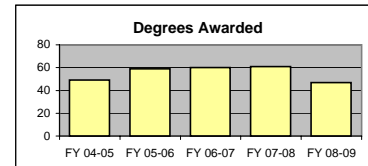
<u>MAJOR ENROLLMENT</u>	<u>FALL 2005</u>	<u>FALL 2006</u>	<u>FALL 2007</u>	<u>FALL 2008</u>	<u>FALL 2009</u>
BA ENGLISH	207	192	216	296	245
PB ENGLISH: WRITING & RHETORIC					2
MA ENGLISH	49	44	51	53	37
TOTAL	256	236	267	349	284



<u>DEPARTMENTAL RETENTION*</u>	<u>04-05</u>	<u>05-06</u>	<u>06-07</u>	<u>07-08</u>	<u>08-09</u>
*Enrolled undergraduate majors returning to dept.	69.1%	59.9%	68.0%	57.8%	63.6%

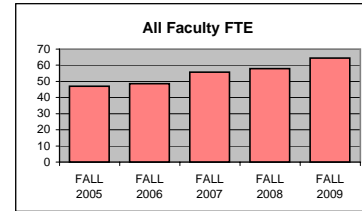


<u>DEGREES AWARDED</u>	<u>FY 04-05</u>	<u>FY 05-06</u>	<u>FY 06-07</u>	<u>FY 07-08</u>	<u>FY 08-09</u>
BA ENGLISH	35	44	37	45	32
MA ENGLISH	14	15	23	16	15
TOTAL	49	59	60	61	47

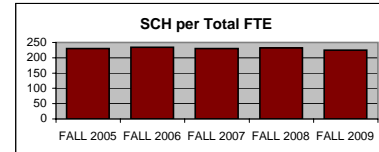


<u>FTE FACULTY</u>	<u>FALL 2005</u>	<u>FALL 2006</u>	<u>FALL 2007</u>	<u>FALL 2008</u>	<u>FALL 2009</u>
FULL-TIME Tenured/Tenure Track	19.50	15.75	17.25	18.25	20.00
FULL-TIME Non-Tenure Track	18.25	25.00	29.50	30.25	28.00
PART-TIME (Adjunct)	9.25	7.75	9.00	9.50	13.75
FT Teaching Overload*					2.75
TOTAL	47.00	48.50	55.75	58.00	64.50

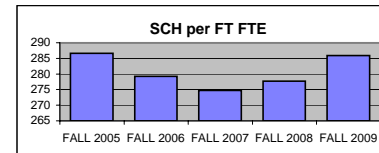
*Teaching overload was separated from FT faculty FTE beginning in Fall 2009.



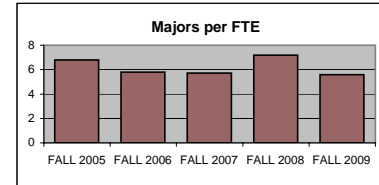
<u>SCH PER FTE FACULTY (ADJUNCT INCL)</u>	<u>FALL 2005</u>	<u>FALL 2006</u>	<u>FALL 2007</u>	<u>FALL 2008</u>	<u>FALL 2009</u>
	230.19	234.60	230.37	232.22	224.91



<u>SCH PER FULL-TIME FTE FACULTY</u> (includes both full-time figures above)	<u>FALL 2005</u>	<u>FALL 2006</u>	<u>FALL 2007</u>	<u>FALL 2008</u>	<u>FALL 2009</u>
	286.60	279.21	274.72	277.71	285.85



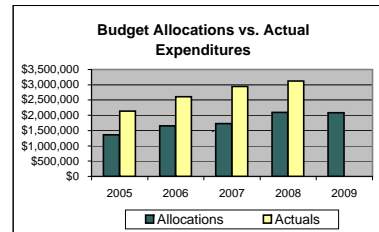
<u>MAJORS PER FULL-TIME FTE FACULTY</u> (includes both full-time figures above)	<u>FALL 2005</u>	<u>FALL 2006</u>	<u>FALL 2007</u>	<u>FALL 2008</u>	<u>FALL 2009</u>
	6.78	5.79	5.71	7.20	5.60



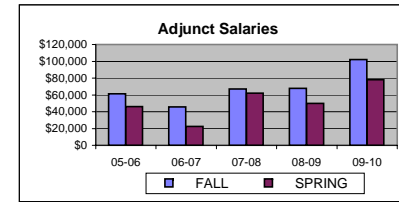
<u>BUDGET ALLOCATIONS</u>	<u>7/1/2005</u>	<u>7/1/2006</u>	<u>7/1/2007</u>	<u>7/1/2008</u>	<u>7/1/2009</u>
Base budget figures as of 07/01, beginning of each fiscal year.					
SALARIES	\$1,346,847	\$1,637,780	\$1,706,951	\$2,052,854	\$2,052,932
OPERATING	\$13,495	\$22,491	\$22,491	\$38,392	\$28,480
TOTAL	\$1,360,342	\$1,660,271	\$1,729,442	\$2,091,246	\$2,081,412

<u>ACTUAL YEAR END EXPENDITURES</u>	<u>05-06</u>	<u>06-07</u>	<u>07-08</u>	<u>08-09</u>
	\$2,132,775	\$2,607,470	\$2,945,676	\$3,119,900

Includes benefits, longevity pay and adjunct salaries for fiscal year.

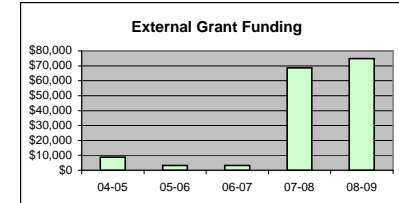


<u>ADJUNCT SALARIES</u>	<u>05-06</u>	<u>06-07</u>	<u>07-08</u>	<u>08-09</u>	<u>09-10</u>
FALL	\$61,396	\$45,655	\$66,916	\$68,000	\$102,000
SPRING	\$45,964	\$22,340	\$62,000	\$50,000	\$78,000

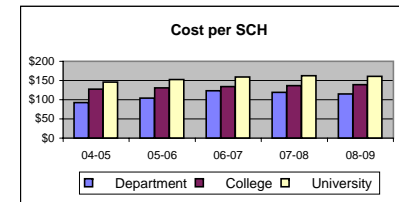


<u>EXTERNAL GRANT FUNDING</u>	<u>04-05</u>	<u>05-06</u>	<u>06-07</u>	<u>07-08</u>	<u>08-09</u>
NUMBER AWARDED	3	2	2	4	3
AMOUNT AWARDED	\$8,700	\$3,200	\$3,200	\$68,600	\$74,953

Grant funding figures are for fiscal year completed just before current Fall semester.



<u>COST PER SCH (Fall & Spring)</u>	<u>04-05</u>	<u>05-06</u>	<u>06-07</u>	<u>07-08</u>	<u>08-09</u>
Actual Expenditures/(Fall SCH + Spring SCH)					
Department	\$92.36	\$103.79	\$123.44	\$119.31	\$114.63
College	\$127.37	\$130.60	\$133.94	\$136.93	\$139.01
University	\$145.95	\$152.71	\$159.26	\$162.48	\$160.89



<u>SCHOLARLY WORKS (T/TT ONLY)</u>	<u>Cal Yr 2007</u>	<u>Cal Yr 2008</u>	<u>Cal Yr 2009</u>
Paper Presentations	19	21	22
Journal Articles	39	16	15
Books Authored	2	0	4
Books Edited	3	1	3
Juried Shows, Performances	23	14	28
Works Cited (added 2009)			23
External Commissions (added 2009)			0
All Scholarly Works Total	<u>86</u>	<u>52</u>	<u>95</u>

<u>SCHOLARSHIP PER FAC FTE (T/TT ONLY)</u>	<u>Cal Yr 2007</u>	<u>Cal Yr 2008</u>	<u>Cal Yr 2009</u>
Department	4.99	2.85	4.75
College	3.92	3.40	6.39
University	3.58	3.20	5.35