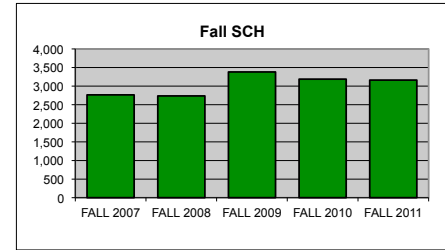


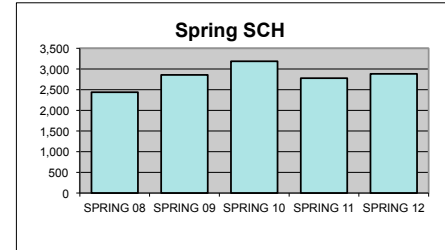
UTC DEPARTMENT PROFILE: Economics

STUDENT CREDIT HOUR PRODUCTION

	<u>FALL 2007</u>	<u>FALL 2008</u>	<u>FALL 2009</u>	<u>FALL 2010</u>	<u>FALL 2011</u>
LOWER	2,418	2,460	2,997	2,658	2,691
UPPER	270	212	312	462	418
GRADUATE	78	66	72	69	54
TOTAL	2,766	2,738	3,381	3,189	3,163

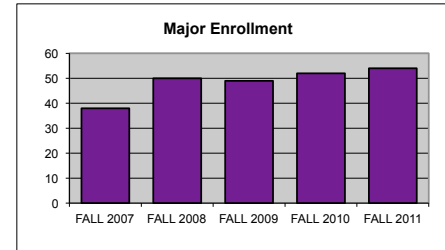


	<u>SPRING 08</u>	<u>SPRING 09</u>	<u>SPRING 10</u>	<u>SPRING 11</u>	<u>SPRING 12</u>
LOWER	2,193	2,556	2,787	2,283	2,424
UPPER	192	245	326	428	408
GRADUATE	54	57	75	66	51
TOTAL	2,439	2,858	3,188	2,777	2,883



MAJOR ENROLLMENT

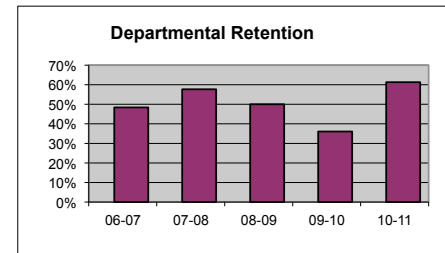
	<u>FALL 2007</u>	<u>FALL 2008</u>	<u>FALL 2009</u>	<u>FALL 2010</u>	<u>FALL 2011</u>
BA ECONOMICS	10	16	12	8	18
BS ECONOMICS	28	34	37	44	36
TOTAL	38	50	49	52	54



DEPARTMENTAL RETENTION*

*Enrolled undergraduate majors returning to major

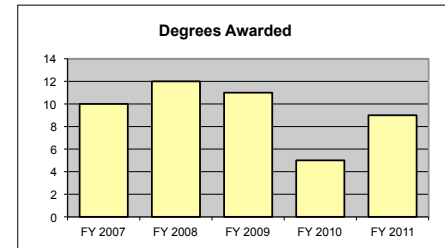
	<u>06-07</u>	<u>07-08</u>	<u>08-09</u>	<u>09-10</u>	<u>10-11</u>
	48.4%	57.7%	50.0%	36.1%	61.3%



DEGREES AWARDED

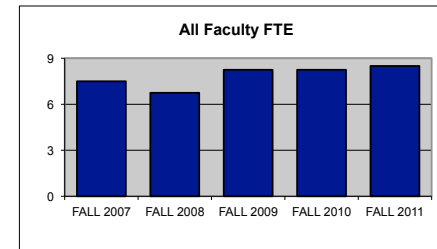
	<u>FY 2007</u>	<u>FY 2008</u>	<u>FY 2009</u>	<u>FY 2010</u>	<u>FY 2011</u>
BA ECONOMICS	1	1	1	1	0
BS ECONOMICS	9	11	10	4	9
TOTAL	10	12	11	5	9

Degrees awarded between July 1st and June 30th of following year.

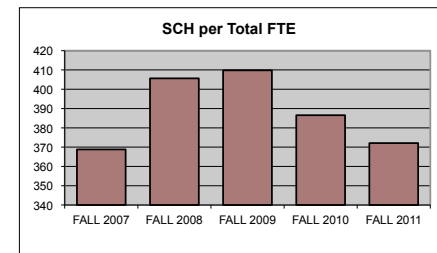


FTE FACULTY	FALL 2007	FALL 2008	FALL 2009	FALL 2010	FALL 2011
FULL-TIME Tenured/Tenure Track	5.75	5.00	6.50	6.50	6.50
FULL-TIME Non-Tenure Track	0.00	1.00	1.00	1.00	1.00
PART-TIME (Adjunct)	1.75	0.75	0.50	0.75	0.50
FT Teaching Overload*			0.25	0.00	0.50
TOTAL	7.50	6.75	8.25	8.25	8.50

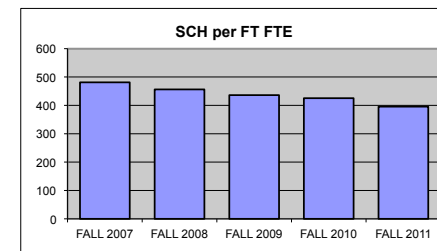
*Teaching overload was separated from FT faculty FTE beginning in Fall 2009.



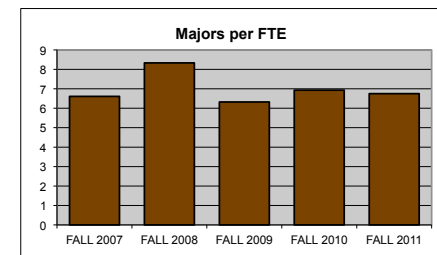
SCH PER FTE FACULTY (ADJUNCT INCL)	FALL 2007	FALL 2008	FALL 2009	FALL 2010	FALL 2011
	368.80	405.63	409.82	386.55	372.12



SCH PER FULL-TIME FTE FACULTY (includes both full-time figures and TOL above)	FALL 2007	FALL 2008	FALL 2009	FALL 2010	FALL 2011
	481.04	456.33	436.26	425.20	395.38



MAJORS PER FULL-TIME FTE FACULTY (includes both full-time figures and TOL above)	FALL 2007	FALL 2008	FALL 2009	FALL 2010	FALL 2011
	6.61	8.33	6.32	6.93	6.75



BUDGET ALLOCATIONS	FY 2007	FY 2008	FY 2009	FY 2010	FY 2011
Base budget figures as of 07/01, beginning of each fiscal year.					
SALARIES	\$556,659	\$573,556	\$609,381	\$609,381	\$615,102
OPERATING	\$15,105	\$15,105	\$16,729	\$15,049	\$15,889
TOTAL	\$571,764	\$588,661	\$626,110	\$624,430	\$630,991

ACTUAL YEAR END EXPENDITURES	FY 2007	FY 2008	FY 2009	FY 2010	FY 2011
	\$815,413	\$790,433	\$902,800	\$854,800	\$860,902

Includes benefits and longevity pay for fiscal year.

ADJUNCT SALARIES	07-08	08-09	09-10	10-11	11-12
FALL	\$16,929	\$6,000	\$4,000	\$6,500	\$5,000
SPRING	\$6,000	\$2,000	\$4,000	\$4,000	\$10,000

EXTERNAL GRANT FUNDING	FY 2007	FY 2008	FY 2009	FY 2010	FY 2011
NUMBER AWARDED	0	0	0	0	0
AMOUNT AWARDED	\$0	\$0	\$0	\$0	\$0

Grant funding figures are for fiscal year completed just before current Fall semester.

COST PER SCH (Fall & Spring)	FY 2007	FY 2008	FY 2009	FY 2010	FY 2011
(Actual Expenditures + Fall Adj Salaries + Spring Adj Salaries)/(Fall SCH + Spring SCH)					
Department	\$161.64	\$156.27	\$162.76	\$131.34	\$146.06
College	\$138.93	\$140.89	\$136.05	\$118.75	\$124.24
University	\$164.98	\$162.74	\$157.45	\$141.76	\$145.63

SCHOLARLY WORKS (T/TT ONLY)	Cal Yr 2007	Cal Yr 2008	Cal Yr 2009	Cal Yr 2010*	Cal Yr 2011
Paper Presentations	2	11	4		2
Journal Articles	5	5	3		1
Books Authored	0	0	3		1
Books Edited	0	4	0		0
Juried Shows, Performances	0	0	0		0
Works Cited (added 2009)			2		0
External Commissions (added 2009)			0		0
All Scholarly Works Total	7	20	12	0	4

SCHOLARSHIP PER FAC FTE (T/TT ONLY)					
Department	1.22	4.00	1.85	0.00	0.62
College	3.88	3.40	6.39	5.42	5.73
University	3.53	3.17	5.35	2.87	8.36

* No responses were received from the Economics dept for the 2010 Calendar year.

