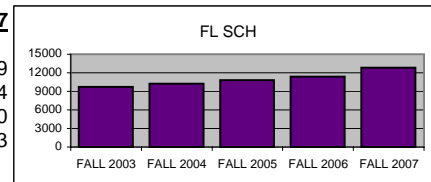


## UTC DEPARTMENT PROFILE: English

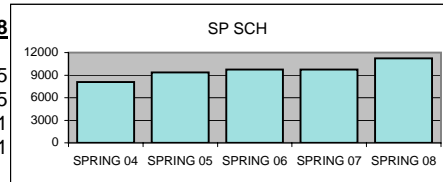
### STUDENT CREDIT HOUR PRODUCTION

	<u>FALL 2003</u>	<u>FALL 2004</u>	<u>FALL 2005</u>	<u>FALL 2006</u>	<u>FALL 2007</u>
LOWER	8328	8670	9153	9678	11019
UPPER	1085	1286	1384	1412	1524
GRADUATE	306	297	282	288	300
<b>TOTAL</b>	<b>9719</b>	<b>10253</b>	<b>10819</b>	<b>11378</b>	<b>12843</b>



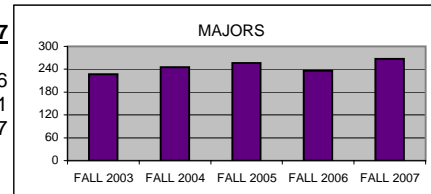
### SPRING 04   SPRING 05   SPRING 06   SPRING 07   SPRING 08

LOWER	6699	7707	7827	8127	9345
UPPER	1102	1363	1551	1402	1555
GRADUATE	285	294	351	216	321
<b>TOTAL</b>	<b>8086</b>	<b>9364</b>	<b>9729</b>	<b>9745</b>	<b>11221</b>



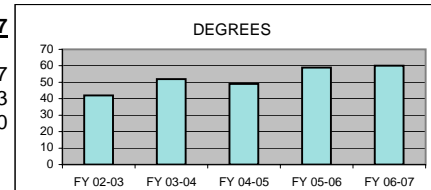
### MAJOR ENROLLMENT

	<u>FALL 2003</u>	<u>FALL 2004</u>	<u>FALL 2005</u>	<u>FALL 2006</u>	<u>FALL 2007</u>
BA ENGLISH	178	199	207	192	216
MA ENGLISH	49	46	49	44	51
<b>TOTAL</b>	<b>227</b>	<b>245</b>	<b>256</b>	<b>236</b>	<b>267</b>



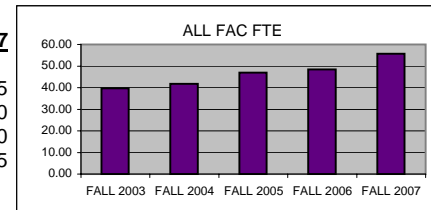
### DEGREES AWARDED

	<u>FY 02-03</u>	<u>FY 03-04</u>	<u>FY 04-05</u>	<u>FY 05-06</u>	<u>FY 06-07</u>
BA ENGLISH	29	29	35	44	37
MA ENGLISH	13	23	14	15	23
<b>TOTAL</b>	<b>42</b>	<b>52</b>	<b>49</b>	<b>59</b>	<b>60</b>



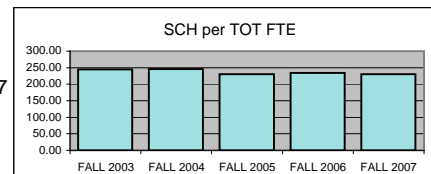
### FTE FACULTY

	<u>FALL 2003</u>	<u>FALL 2004</u>	<u>FALL 2005</u>	<u>FALL 2006</u>	<u>FALL 2007</u>
FULL-TIME Tenured/Tenure Track	15.75	16.50	19.50	15.75	17.25
FULL-TIME Non-Tenure Track	10.00	16.25	18.25	25.00	29.50
PART-TIME (Adjunct)	14.00	9.00	9.25	7.75	9.00
<b>TOTAL</b>	<b>39.75</b>	<b>41.75</b>	<b>47.00</b>	<b>48.50</b>	<b>55.75</b>



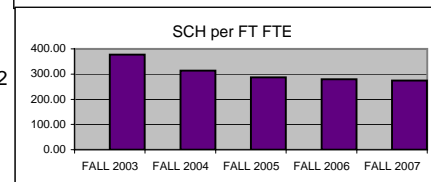
### SCH PER FTE FACULTY (ADJUNCT INCL)

<u>FALL 2003</u>	<u>FALL 2004</u>	<u>FALL 2005</u>	<u>FALL 2006</u>	<u>FALL 2007</u>
244.50	245.58	230.19	234.60	230.37



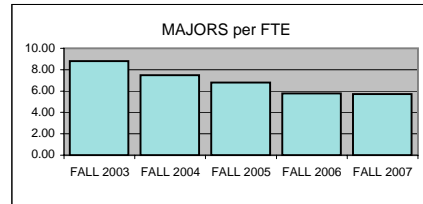
### SCH PER FULL-TIME FTE FACULTY (includes both full-time figures above)

<u>FALL 2003</u>	<u>FALL 2004</u>	<u>FALL 2005</u>	<u>FALL 2006</u>	<u>FALL 2007</u>
377.44	313.07	286.60	279.21	274.72



**MAJORS PER FULL-TIME FTE FACULTY**  
(includes both full-time figures above)

<u>FALL 2003</u>	<u>FALL 2004</u>	<u>FALL 2005</u>	<u>FALL 2006</u>	<u>FALL 2007</u>
8.82	7.48	6.78	5.79	5.71



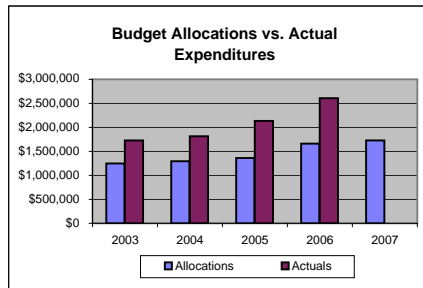
**BUDGET ALLOCATIONS**

Base budget figures as of 07/01, beginning of each fiscal year.

	<u>7/1/03</u>	<u>7/1/04</u>	<u>7/1/05</u>	<u>7/1/06</u>	<u>7/1/2007</u>
<b>SALARIES</b>	\$1,232,032	\$1,280,257	\$1,346,847	\$1,637,780	\$1,706,951
<b>OPERATING</b>	\$13,495	\$13,495	\$13,495	\$22,491	\$22,491
<b>TOTAL</b>	\$1,245,527	\$1,293,752	\$1,360,342	\$1,660,271	\$1,729,442

<b>ACTUAL YEAR END EXPENDITURES</b>	<u>7/1/03</u>	<u>7/1/04</u>	<u>7/1/05</u>	<u>7/1/06</u>	<u>7/1/2007</u>
	\$1,724,233	\$1,811,848	\$2,132,775	\$2,607,470	

Includes benefits, longevity pay and adjunct salaries for fiscal year.



**ADJUNCT SALARIES**

	<u>03-04</u>	<u>04-05</u>	<u>05-06</u>	<u>06-07</u>	<u>07-08</u>
<b>FALL</b>	\$59,498	\$40,010	\$61,396	\$45,655	\$66,916
<b>SPRING</b>	\$51,544	\$30,303	\$45,964	\$22,340	\$62,000

**EXTERNAL GRANT FUNDING**

Grant funding figures are for fiscal year completed just before current Fall semester.

	<u>02-03</u>	<u>03-04</u>	<u>04-05</u>	<u>05-06</u>	<u>06-07</u>
	\$48,200	\$63,797	\$8,700	\$3,200	\$3,200

**COST PER SCH (Fall & Spring)**

Actual Expenditures/(Fall SCH + Spring SCH)

	<u>03-04</u>	<u>04-05</u>	<u>05-06</u>	<u>06-07</u>
<b>Department</b>	\$96.84	\$92.36	\$103.79	\$123.44
<b>College</b>	\$129.47	\$127.37	\$130.60	\$133.94
<b>University</b>	\$142.66	\$145.95	\$152.71	\$159.26

**SCHOLARLY WORKS (T/TT ONLY)**

	<u>Cal Yr 2007</u>
<b>Paper Presentations</b>	19
<b>Journal Articles</b>	39
<b>Books Authored</b>	2
<b>Books Edited</b>	3
<b>Juried Shows, Performances</b>	23
<b>All Scholarly Works Total</b>	86

**SCHOLARSHIP PER FAC FTE (T/TT ONLY)**

	<u>Cal Yr 2007</u>
<b>Department</b>	4.99
<b>College</b>	3.90
<b>University</b>	3.58