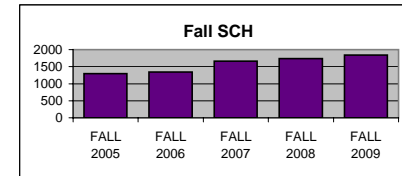
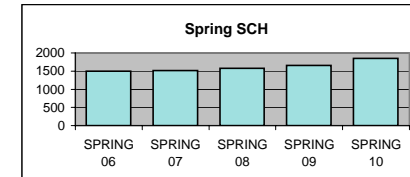


UTC DEPARTMENT PROFILE: Communications

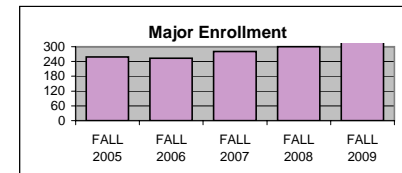
<u>STUDENT CREDIT HOUR PRODUCTION</u>	<u>FALL 2005</u>	<u>FALL 2006</u>	<u>FALL 2007</u>	<u>FALL 2008</u>	<u>FALL 2009</u>
LOWER	658	640	900	976	943
UPPER	633	700	761	758	900
GRADUATE	3	0	0	0	0
TOTAL	1294	1340	1661	1734	1843



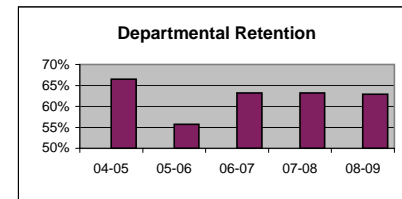
	<u>SPRING 06</u>	<u>SPRING 07</u>	<u>SPRING 08</u>	<u>SPRING 09</u>	<u>SPRING 10</u>
LOWER	755	758	823	822	963
UPPER	739	754	756	831	891
GRADUATE	0	0	0	0	0
TOTAL	1494	1512	1579	1653	1854



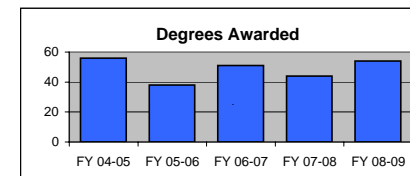
<u>MAJOR ENROLLMENT</u>	<u>FALL 2005</u>	<u>FALL 2006</u>	<u>FALL 2007</u>	<u>FALL 2008</u>	<u>FALL 2009</u>
BA COMMUNICATIONS	259	253	280	300	321



<u>DEPARTMENTAL RETENTION*</u>	<u>04-05</u>	<u>05-06</u>	<u>06-07</u>	<u>07-08</u>	<u>08-09</u>
*Enrolled undergraduate majors returning to dept.	66.5%	55.7%	63.2%	63.2%	62.9%

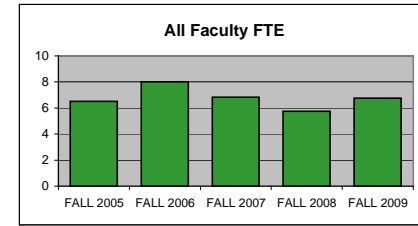


<u>DEGREES AWARDED</u>	<u>FY 04-05</u>	<u>FY 05-06</u>	<u>FY 06-07</u>	<u>FY 07-08</u>	<u>FY 08-09</u>
BA COMMUNICATIONS	56	38	51	44	54

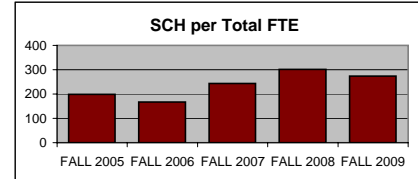


<u>FTE FACULTY</u>	<u>FALL 2005</u>	<u>FALL 2006</u>	<u>FALL 2007</u>	<u>FALL 2008</u>	<u>FALL 2009</u>
FULL-TIME Tenured/Tenure Track	5.00	5.00	5.00	4.00	5.00
FULL-TIME Non-Tenure Track	0.25	1.25	1.25	1.00	0.00
PART-TIME (Adjunct)	1.25	1.75	0.58	0.75	1.75
FT Teaching Overload*					0.00
TOTAL	6.50	8.00	6.83	5.75	6.75

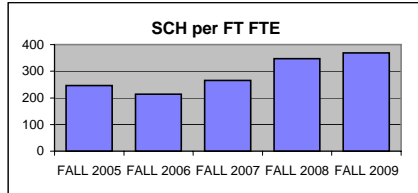
*Teaching overload was separated from FT faculty FTE beginning in Fall 2009.



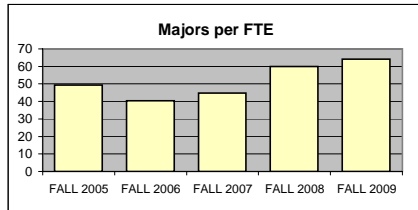
<u>SCH PER FTE FACULTY (ADJUNCT INCL)</u>	<u>FALL 2005</u>	<u>FALL 2006</u>	<u>FALL 2007</u>	<u>FALL 2008</u>	<u>FALL 2009</u>
	199.08	167.50	243.19	301.57	273.04



<u>SCH PER FULL-TIME FTE FACULTY</u> (includes both full-time figures above)	<u>FALL 2005</u>	<u>FALL 2006</u>	<u>FALL 2007</u>	<u>FALL 2008</u>	<u>FALL 2009</u>
	246.48	214.40	265.76	346.80	368.60



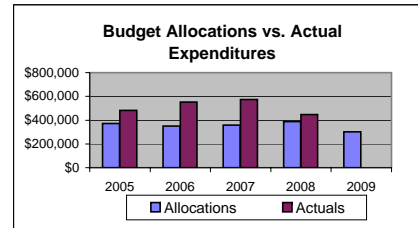
<u>MAJORS PER FULL-TIME FTE FACULTY</u> (includes both full-time figures above)	<u>FALL 2005</u>	<u>FALL 2006</u>	<u>FALL 2007</u>	<u>FALL 2008</u>	<u>FALL 2009</u>
	49.33	40.48	44.80	60.00	64.20



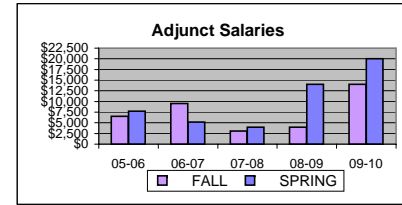
<u>BUDGET ALLOCATIONS</u>	<u>7/1/2005</u>	<u>7/1/2006</u>	<u>7/1/2007</u>	<u>7/1/2008</u>	<u>7/1/2009</u>
Base budget figures as of 07/01, beginning of each fiscal year.					
SALARIES	\$354,641	\$329,965	\$338,878	\$354,212	\$269,177
OPERATING	\$16,341	\$19,990	\$19,990	\$34,990	\$32,470
TOTAL	\$370,982	\$349,955	\$358,868	\$389,202	\$301,647

<u>ACTUAL YEAR END EXPENDITURES</u>	<u>05-06</u>	<u>06-07</u>	<u>07-08</u>	<u>08-09</u>
	\$481,664	\$551,865	\$572,888	\$446,660

Includes benefits, longevity pay and adjunct salaries for fiscal year.



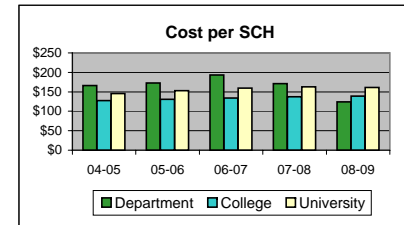
<u>ADJUNCT SALARIES</u>	<u>05-06</u>	<u>06-07</u>	<u>07-08</u>	<u>08-09</u>	<u>09-10</u>
FALL	\$6,506	\$9,509	\$3,050	\$4,000	\$14,000
SPRING	\$7,758	\$5,158	\$4,000	\$14,000	\$20,000



<u>EXTERNAL GRANT FUNDING</u>	<u>04-05</u>	<u>05-06</u>	<u>06-07</u>	<u>07-08</u>	<u>08-09</u>
NUMBER AWARDED	0	0	0	0	0
AMOUNT AWARDED	\$0	\$0	\$0	\$0	\$0

Grant funding figures are for fiscal year completed just before current Fall semester.

<u>COST PER SCH (Fall & Spring)</u> Actual Expenditures/(Fall SCH + Spring SCH)	<u>04-05</u>	<u>05-06</u>	<u>06-07</u>	<u>07-08</u>	<u>08-09</u>
Department	\$166.18	\$172.76	\$193.50	\$170.74	\$124.49
College	\$127.37	\$130.60	\$133.94	\$136.93	\$139.01
University	\$145.95	\$152.71	\$159.26	\$162.48	\$160.89



<u>SCHOLARLY WORKS (T/TT ONLY)</u>	<u>Cal Yr 2007</u>	<u>Cal Yr 2008</u>	<u>Cal Yr 2009</u>
Paper Presentations	4	3	5
Journal Articles	3	2	2
Books Authored	2	0	0
Books Edited	3	1	2
Juried Shows, Performances	2	0	0
Works Cited (added 2009)			0
External Commissions (added 2009)			0
All Scholarly Works Total	14	6	9

<u>SCHOLARSHIP PER FAC FTE (T/TT ONLY)</u>	<u>Cal Yr 2007</u>	<u>Cal Yr 2008</u>	<u>Cal Yr 2009</u>
Department	2.80	1.50	1.80
College	3.92	3.40	6.39
University	3.58	3.20	5.35