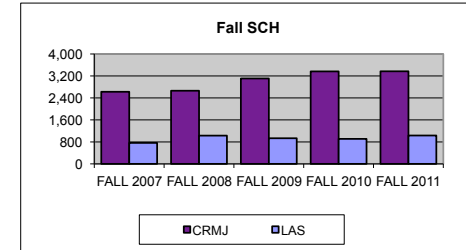
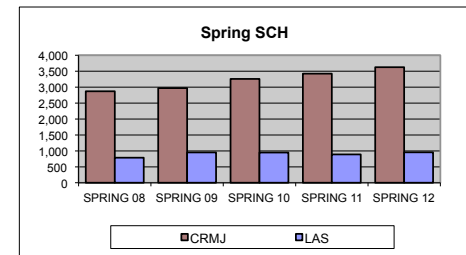


UTC DEPARTMENT PROFILE: Criminal Justice & Legal Assistant Studies

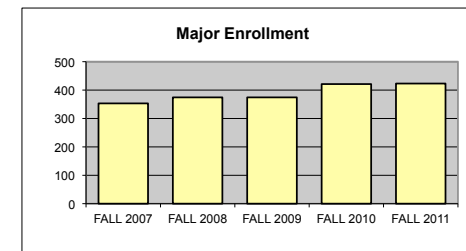
<u>STUDENT CREDIT HOUR PRODUCTION</u>	<u>FALL 2007</u>	<u>FALL 2008</u>	<u>FALL 2009</u>	<u>FALL 2010</u>	<u>FALL 2011</u>
LOWER - CRMJ	1,170	1,155	1,533	1,290	1,794
UPPER - CRMJ	1,232	1,359	1,427	1,872	1,414
GRADUATE - CRMJ	222	147	147	204	162
TOTAL - CRMJ	2,624	2,661	3,107	3,366	3,370
LOWER - LAS	528	555	648	537	675
UPPER - LAS	234	472	285	372	357
GRADUATE - LAS	0	0	0	0	0
TOTAL - LAS	762	1,027	933	909	1,032
GRAND TOTAL	3,386	3,688	4,040	4,275	4,402



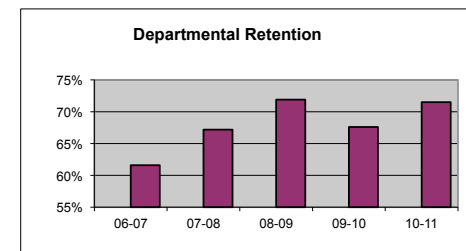
	<u>SPRING 08</u>	<u>SPRING 09</u>	<u>SPRING 10</u>	<u>SPRING 11</u>	<u>SPRING 12</u>
LOWER - CRMJ	834	645	987	867	1,425
UPPER - CRMJ	1,839	2,147	2,070	2,350	2,022
GRADUATE - CRMJ	197	177	201	207	180
TOTAL - CRMJ	2,870	2,969	3,258	3,424	3,627
LOWER - LAS	384	408	489	408	474
UPPER - LAS	403	546	461	483	481
GRADUATE - LAS	0	0	0	0	0
TOTAL - LAS	787	954	950	891	955
GRAND TOTAL	3,657	3,923	4,208	4,315	4,582



<u>MAJOR ENROLLMENT</u>	<u>FALL 2007</u>	<u>FALL 2008</u>	<u>FALL 2009</u>	<u>FALL 2010</u>	<u>FALL 2011</u>
BS CRIMINAL JUSTICE	259	283	289	338	349
BS LEGAL ASSISTANT STUDIES	61	69	64	57	53
MS CRIMINAL JUSTICE	33	22	21	26	21
TOTAL	353	374	374	421	423

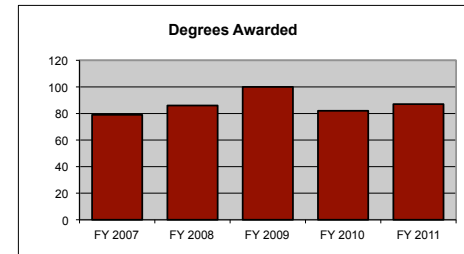


<u>DEPARTMENTAL RETENTION*</u>	<u>06-07</u>	<u>07-08</u>	<u>08-09</u>	<u>09-10</u>	<u>10-11</u>
*Enrolled undergraduate majors returning to majors					
CRIMINAL JUSTICE (incl. LAS until F10)	61.6%	67.2%	71.9%	67.6%	71.5%
LEGAL ASSISTANT STUDIES	-	-	-	-	69.4%



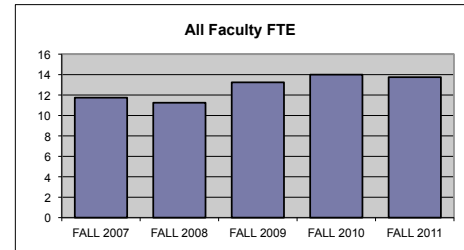
<u>DEGREES AWARDED</u>	<u>FY 2007</u>	<u>FY 2008</u>	<u>FY 2009</u>	<u>FY 2010</u>	<u>FY 2011</u>
BS CRIMINAL JUSTICE	61	62	62	54	61
BS LEGAL ASSISTANT STUDIES	12	16	23	21	21
MS CRIMINAL JUSTICE	6	8	15	7	5
TOTAL	79	86	100	82	87

Degrees awarded between July 1st and June 30th of following year.

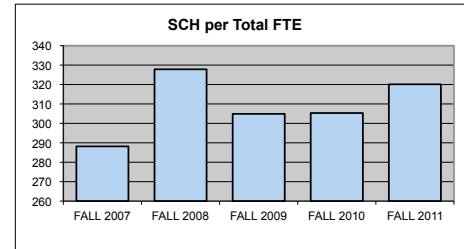


<u>FTE FACULTY</u>	<u>FALL 2007</u>	<u>FALL 2008</u>	<u>FALL 2009</u>	<u>FALL 2010</u>	<u>FALL 2011</u>
FULL-TIME Tenured/Tenure Track	7.75	6.00	6.50	8.50	8.50
FULL-TIME Non-Tenure Track	0.00	1.00	1.00	1.00	1.00
PART-TIME (Adjunct)	4.00	4.25	5.50	4.50	4.25
FT Teaching Overload*			0.25	0.00	0.00
TOTAL	11.75	11.25	13.25	14.00	13.75

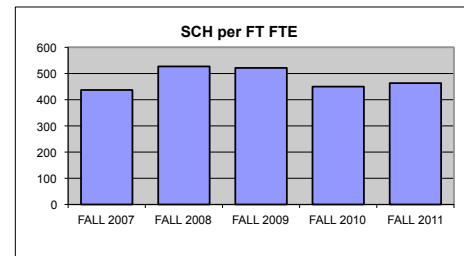
*Teaching overload was separated from FT faculty FTE beginning in Fall 2009.



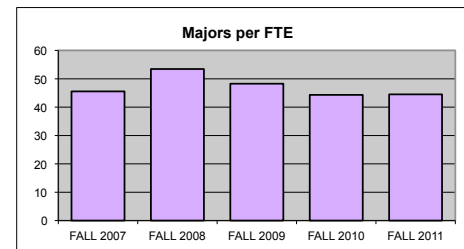
<u>SCH PER FTE FACULTY (ADJUNCT INCL)</u>	<u>FALL 2007</u>	<u>FALL 2008</u>	<u>FALL 2009</u>	<u>FALL 2010</u>	<u>FALL 2011</u>
	288.17	327.82	304.91	305.36	320.15



<u>SCH PER FULL-TIME FTE FACULTY</u> (includes both full-time figures and TOL above)	<u>FALL 2007</u>	<u>FALL 2008</u>	<u>FALL 2009</u>	<u>FALL 2010</u>	<u>FALL 2011</u>
	436.90	526.86	521.29	450.00	463.37



<u>MAJORS PER FULL-TIME FTE FACULTY</u> (includes both full-time figures and TOL above)	<u>FALL 2007</u>	<u>FALL 2008</u>	<u>FALL 2009</u>	<u>FALL 2010</u>	<u>FALL 2011</u>
	45.55	53.43	48.26	44.32	44.53



BUDGET ALLOCATIONS	FY 2007	FY 2008	FY 2009	FY 2010	FY 2011
Base budget figures as of 07/01, beginning of each fiscal year.					
SALARIES	\$452,689	\$465,657	\$478,674	\$484,889	\$558,605
OPERATING	\$17,992	\$17,992	\$20,015	\$18,125	\$19,070
TOTAL	\$470,681	\$483,649	\$498,689	\$503,014	\$577,675

ACTUAL YEAR END EXPENDITURES	FY 2007	FY 2008	FY 2009	FY 2010	FY 2011
	\$618,763	\$680,666	\$661,008	\$646,631	\$802,264

Includes benefits and longevity pay for fiscal year.

ADJUNCT SALARIES	07-08	08-09	09-10	10-11	11-12
FALL	\$22,860	\$28,000	\$41,600	\$36,000	\$34,000
SPRING	\$26,000	\$30,000	\$46,000	\$38,000	\$46,000

EXTERNAL GRANT FUNDING	FY 2007	FY 2008	FY 2009	FY 2010	FY 2011
NUMBER AWARDED	0	0	0	0	0
AMOUNT AWARDED	\$0	\$0	\$0	\$0	\$0

Grant funding figures are for fiscal year completed just before current Fall semester.

COST PER SCH (Fall & Spring)	FY 2007	FY 2008	FY 2009	FY 2010	FY 2011
(Actual Expenditures + Fall Adj Salaries + Spring Adj Salaries)/(Fall SCH + Spring SCH)					
Department	\$89.94	\$103.58	\$94.47	\$89.02	\$102.01
College	\$138.93	\$140.89	\$136.05	\$118.75	\$124.24
University	\$164.98	\$162.74	\$157.45	\$141.76	\$145.63

SCHOLARLY WORKS (T/TT ONLY)	Cal Yr 2007	Cal Yr 2008	Cal Yr 2009	Cal Yr 2010	Cal Yr 2011
Paper Presentations	19	6	6	9	9
Journal Articles	6	4	11	6	9
Books Authored	0	0	0	0	0
Books Edited	0	0	0	0	1
Juried Shows, Performances	0	0	0	0	0
Works Cited (added 2009)			0	0	0
External Commissions (added 2009)			0	0	0
All Scholarly Works Total	25	10	17	15	19

SCHOLARSHIP PER FAC FTE (T/TT ONLY)					
Department	3.23	1.67	2.62	1.76	2.24
College	3.88	3.40	6.39	5.42	5.73
University	3.53	3.17	5.35	4.87	8.36

