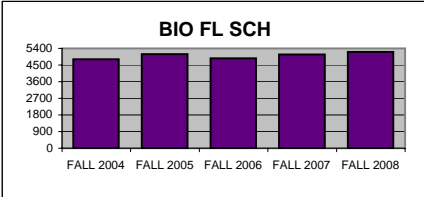
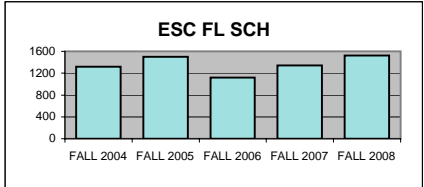


UTC DEPARTMENT PROFILE: Biological & Environmental Sciences

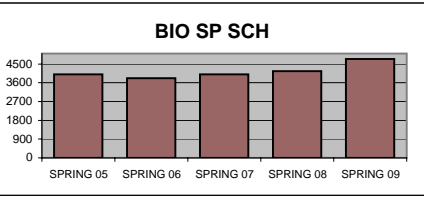
<u>STUDENT CREDIT HOUR PRODUCTION</u>	<u>FALL 2004</u>	<u>FALL 2005</u>	<u>FALL 2006</u>	<u>FALL 2007</u>	<u>FALL 2008</u>
LOWER - BIOL	3570	3792	3507	3716	3829
UPPER - BIOL	1221	1254	1309	1318	1343
GRADUATE - BIOL	15	37	54	33	41
TOTAL - BIOL	4806	5083	4870	5067	5213



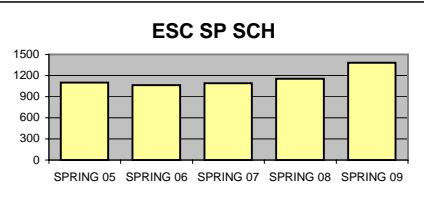
LOWER - ESC	954	1097	857	1006	1127
UPPER - ESC	144	165	116	136	185
GRADUATE - ESC	221	236	149	202	209
TOTAL - ESC	1319	1498	1122	1344	1521
GRAND TOTAL	6125	6581	5992	6411	6734



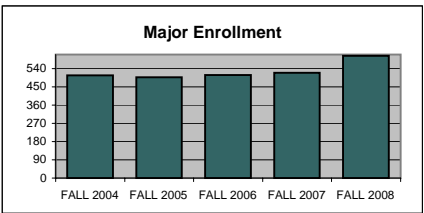
	<u>SPRING 05</u>	<u>SPRING 06</u>	<u>SPRING 07</u>	<u>SPRING 08</u>	<u>SPRING 09</u>
LOWER - BIOL	2683	2618	2630	2653	3258
UPPER - BIOL	1301	1186	1353	1439	1422
GRADUATE - BIOL	22	16	22	58	54
TOTAL - BIOL	4006	3820	4005	4150	4734



LOWER - ESC	736	739	776	719	925
UPPER - ESC	123	119	145	251	277
GRADUATE - ESC	241	207	170	183	182
TOTAL - ESC	1100	1065	1091	1153	1384
GRAND TOTAL	5106	4885	5096	5303	6118

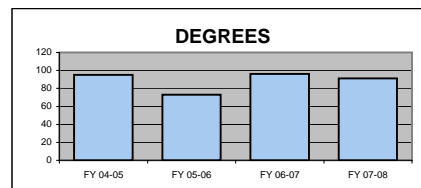


<u>MAJOR ENROLLMENT</u>	<u>FALL 2004</u>	<u>FALL 2005</u>	<u>FALL 2006</u>	<u>FALL 2007</u>	<u>FALL 2008</u>
PRE-VET	18	21	18	28	29
BA BIOLOGY	1	1	0	0	0
BS BIOLOGY	363	360	363	355	420
BS ENVIRONMENTAL SCIENCE	67	65	85	95	111
BS MEDICAL TECHNOLOGY	15	9	8	5	3
MS ENVIRONMENTAL SCIENCE	44	42	35	37	41
TOTAL	508	498	509	520	604



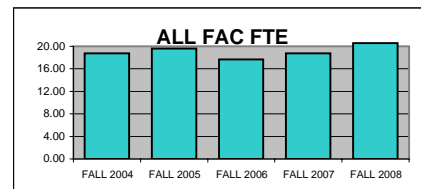
DEGREES AWARDED

	<u>FY 04-05</u>	<u>FY 05-06</u>	<u>FY 06-07</u>	<u>FY 07-08</u>
BA BIOLOGY	0	0	0	0
BS BIOLOGY	69	53	70	72
BS ENVIRONMENTAL SCIENCE	15	10	11	10
BS MEDICAL TECHNOLOGY	0	0	1	0
MS ENVIRONMENTAL SCIENCE	11	10	14	9
TOTAL	95	73	96	91



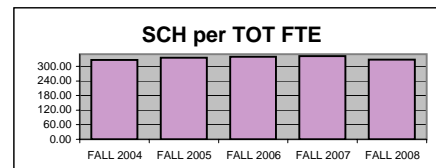
FTE FACULTY

	<u>FALL 2004</u>	<u>FALL 2005</u>	<u>FALL 2006</u>	<u>FALL 2007</u>	<u>FALL 2008</u>
FULL-TIME Tenured/Tenure Track	14.50	15.50	13.50	13.75	14.83
FULL-TIME Non-Tenure Track	2.00	2.00	1.00	1.00	3.00
PART-TIME (Adjunct)	2.25	2.13	3.16	3.99	2.74
TOTAL	18.75	19.63	17.66	18.74	20.57



SCH PER FTE FACULTY (ADJUNCT INCL)

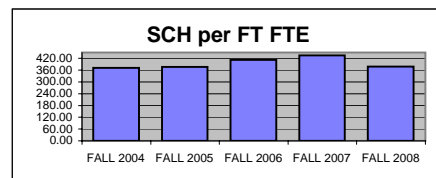
<u>FALL 2004</u>	<u>FALL 2005</u>	<u>FALL 2006</u>	<u>FALL 2007</u>	<u>FALL 2008</u>
326.67	335.25	339.30	342.10	327.37



SCH PER FULL-TIME FTE FACULTY

(includes both full-time figures above)

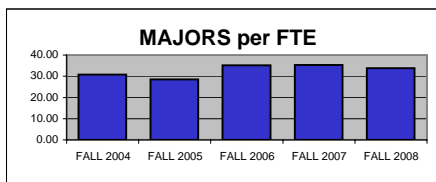
<u>FALL 2004</u>	<u>FALL 2005</u>	<u>FALL 2006</u>	<u>FALL 2007</u>	<u>FALL 2008</u>
371.21	376.06	413.24	434.64	377.68



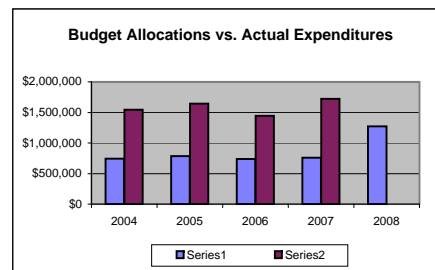
MAJORS PER FULL-TIME FTE FACULTY

(includes both full-time figures above)

<u>FALL 2004</u>	<u>FALL 2005</u>	<u>FALL 2006</u>	<u>FALL 2007</u>	<u>FALL 2008</u>
30.79	28.46	35.10	35.25	33.88



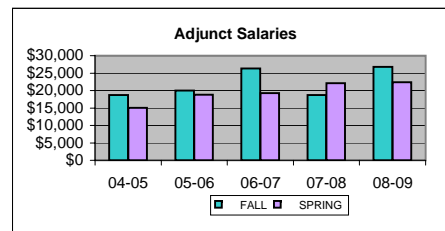
BUDGET ALLOCATIONS	7/1/2004	7/1/2005	7/1/2006	7/1/2007	7/1/2008
Base budget figures as of 07/01, beginning of each fiscal year.					
SALARIES - BIOLOGY	\$734,703	\$777,904	\$725,282	\$745,879	\$812,364
SALARIES - ENV. SCIENCE	\$244,142	\$258,166	\$272,854	\$286,595	\$389,245
OPERATING - BIOLOGY	\$41,170	\$41,170	\$49,810	\$49,810	\$57,727
OPERATING - ENV. SCIENCE	\$8,632	\$8,632	\$11,218	\$11,218	\$13,862
TOTAL	\$743,335	\$786,536	\$736,500	\$757,097	\$1,273,198



ACTUAL YEAR END EXPENDITURES	04-05	05-06	06-07	07-08
	\$1,543,684	\$1,646,051	\$1,447,463	\$1,720,339

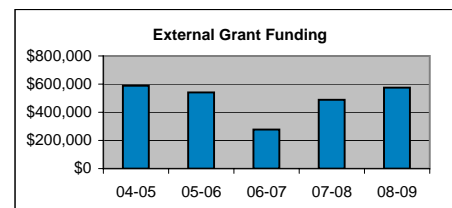
Includes all benefits, longevity pay and adjunct salaries for the fiscal year.

ADJUNCT SALARIES	04-05	05-06	06-07	07-08	08-09
FALL	\$18,710	\$20,032	\$26,303	\$18,672	\$26,800
SPRING	\$15,040	\$18,834	\$19,231	\$22,100	\$22,400

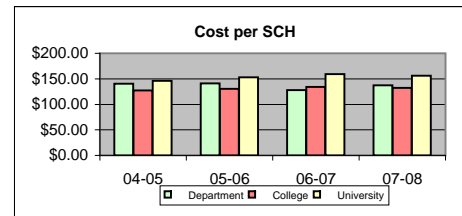


EXTERNAL GRANT FUNDING	04-05	05-06	06-07	07-08	08-09
	\$589,675	\$540,988	\$276,223	\$489,071	\$574,605

Grant funding figures are for fiscal year completed just before current Fall semester.



COST PER SCH (Fall & Spring)	04-05	05-06	06-07	07-08
Actual Expenditures/(Fall SCH + Spring SCH)				
Department	\$140.21	\$140.97	\$128.15	\$137.31
College	\$127.37	\$130.60	\$133.94	\$132.09
University	\$145.95	\$152.71	\$159.26	\$156.16



SCHOLARLY WORKS (T/TT ONLY)	Cal Yr 2007	Cal Yr 2008
Paper Presentations	34	30
Journal Articles	16	24
Books Authored	2	3
Books Edited	5	4
Juried Shows, Performances	0	0
All Scholarly Works Total	57	61

SCHOLARSHIP PER FAC FTE (T/TT ONLY)	Cal Yr 2007	Cal Yr 2008
Department	4.15	4.11
College	3.90	3.40
University	3.58	3.20